



TOWN OF DISCOVERY BAY

A COMMUNITY SERVICES DISTRICT

SDLF Platinum-Level of Governance



PLATINUM LEVEL

President – Bryon Gutow • Director – Kevin Graves • Director – Ashley Porter • Director – Michael Callahan • Director – Carolyn Graham

**NOTICE OF THE REGULAR MEETING
OF THE WATER AND WASTEWATER COMMITTEE
OF THE TOWN OF DISCOVERY BAY
Wednesday, July 7, 2021
STANDING WATER AND WASTEWATER COMMITTEE REGULAR MEETING
5:30 P.M. – 6:30 P.M.**

**NOTICE
Coronavirus COVID-19**

In accordance with the Governor's Executive Order N-33-20, and for the period in which the Order remains in effect, the Town of Discovery Bay Community Services District Committee Chambers will be closed to the public.

To accommodate the public during this period of time that the Committee's Chambers are closed to the public, the Town of Discovery Bay Community Services District Committee Members have arranged for members of the public to observe and address the meeting telephonically.

TO ATTEND BY TELECONFERENCE:
Toll-Free Dial-In Number: (866) 848-2216
CONFERENCE ID **5193676302#**

Download Agenda Packet and Materials at www.todb.ca.gov/

Water and Wastewater Committee Board Members

Chair Kevin Graves

Vice-Chair Ashley Porter

A. ROLL CALL

1. Call business meeting to order 5:30 p.m.
2. Roll Call.

B. PUBLIC COMMENTS (Individual Public Comments will be limited to a 3-minute time limit)

During Public Comments, the public may address the Committee on any issue within the District's jurisdiction which is not on the Agenda. The public may comment on any item on the Agenda at the time the item is before the Committee for consideration. Any person wishing to speak will have 3 minutes to make their comment. There will be no dialog between the Committee and the commenter as the law strictly limits the ability of Committee members to discuss matters not on the agenda. We ask that you refrain from personal attacks during comment, and that you address all comments to the Committee only. Any clarifying questions from the Committee must go through the Chair. Comments from the public do not necessarily reflect the viewpoint of the Committee members.

C. DRAFT MINUTES TO BE APPROVED

1. Approve June 2, 2021, Regular Water and Wastewater Committee DRAFT meeting minutes.

D. PRESENTATIONS

1. Water and Wastewater Update.

E. DISCUSSION ITEMS

1. Discussion and Provide Feedback Regarding the Replacement of the 2008 AquaTech VacTruck with 2022 GapVax VacTruck from Weco Industries.
2. Discussion Regarding Dump Truck.
3. Discussion Regarding Notice of Violation from Central Valley Regional Water Quality Control Board.

F. FUTURE DISCUSSION/AGENDA ITEMS

G. ADJOURNMENT

1. Adjourn to the next Standing Water and Wastewater Committee meeting at the Community Center located at 1601 Discovery Bay Boulevard.

"This agenda shall be made available upon request in alternative formats to persons with a disability, as required by the American with Disabilities Act of 1990 (42 U.S.C. § 12132) and the Ralph M. Brown Act (California Government Code § 54954.2). Persons requesting a disability related modification or accommodation in order to participate in the meeting should contact the Town of Discovery Bay, at (925) 634-1131, during regular business hours, at least forty-eight hours prior to the time of the meeting."

"Materials related to an item on the Agenda submitted to the Town of Discovery Bay after distribution of the agenda packet are available for public inspection in the District Office located at 1800 Willow Lake Road during normal business hours."



TOWN OF DISCOVERY BAY

A COMMUNITY SERVICES DISTRICT

SDLF Platinum-Level of Governance



PLATINUM LEVEL

President – Bryon Gutow • Director – Kevin Graves • Director – Ashley Porter • Director – Michael Callahan • Director – Carolyn Graham

**MINUTES OF THE REGULAR MEETING
OF THE STANDING WATER AND WASTEWATER COMMITTEE
OF THE TOWN OF DISCOVERY BAY
Wednesday, June 2, 2021
5:30 P.M. – 6:30 P.M.**

NOTICE **Coronavirus COVID-19**

In accordance with the Governor's Executive Order N-33-20, and for the period in which the Order remains in effect, the Town of Discovery Bay Community Services District Committee Chambers will be closed to the public.

To accommodate the public during this period of time that the Committee's Chambers are closed to the public, the Town of Discovery Bay Community Services District Committee Members have arranged for members of the public to observe and address the meeting telephonically.

TO ATTEND BY TELECONFERENCE:
Toll-Free Dial-In Number: (866) 848-2216
CONFERENCE ID **5193676302#**

Download Agenda Packet and Materials at www.todb.ca.gov/

Water and Wastewater Committee Board Members

Chair Kevin Graves

Vice-Chair Ashley Porter

A. ROLL CALL

1. Call business meeting to order 5:30 p.m. – Led by Vice-Chair Ashley Porter.
2. Roll Call – All present.

B. PUBLIC COMMENTS (Individual Public Comments will be limited to a 3-minute time limit)

None.

C. DRAFT MINUTES TO BE APPROVED

1. Approve May 5, 2021 Regular Water and Wastewater Committee DRAFT meeting minutes. Motion made by Vice-Chair Ashley Porter to approve items on the Consent Calendar as presented. Second by Chair Kevin Graves.
Vote: Motion Carried – AYES: 2, NOES: 0, ABSTAINED: 0, ABSENT: 0

D. PRESENTATIONS

E. DISCUSSION ITEMS

1. Well 1B Rehab Summary.
Veolia Project Manager Anthony Harper advised the Committee that Well 1 rehabilitation has been completed and the well is back online. Water levels are the same with no reduction in service. Water Engineer Justin Shobe explained a presentation of the work that was done to Well 1B capacity and replacement of its submersible motor.
2. Discussion and Receive Input on the Environmental Mitigation Monitoring Plan (EMMP) Prepared by Advisian for the Diffuser Repair Project.
District Water Engineer Gregory Harris advised the Environmental Mitigation Monitoring Plan has been drafted and is ready to be submitted to California Environmental Quality Act as part of the Diffuser Repair Project. The

Board will review Resolution 2021-09 to adopt the EMMP.

F. FUTURE DISCUSSION/AGENDA ITEMS

G. ADJOURNMENT

1. Adjourned at 5:54 p.m. to the next Standing Water and Wastewater Committee meeting at the Community Center located at 1601 Discovery Bay Boulevard.

"This agenda shall be made available upon request in alternative formats to persons with a disability, as required by the American with Disabilities Act of 1990 (42 U.S.C. § 12132) and the Ralph M. Brown Act (California Government Code § 54954.2). Persons requesting a disability related modification or accommodation in order to participate in the meeting should contact the Town of Discovery Bay, at (925) 634-1131, during regular business hours, at least forty-eight hours prior to the time of the meeting."

"Materials related to an item on the Agenda submitted to the Town of Discovery Bay after distribution of the agenda packet are available for public inspection in the District Office located at 1800 Willow Lake Road during normal business hours."

DRAFT



Town of Discovery Bay

"A Community Services District"

STAFF REPORT

Meeting Date

July 7, 2021

Prepared By: Aaron Goldsworthy, Water and Wastewater Manager
Submitted By: Dina Breitstein, Assistant General Manager

Agenda Title

Discussion and Provide Feedback Regarding the Replacement of the 2008 AquaTech VacTruck with 2022 GapVax VacTruck from Weco Industries.

Recommended Action

To provide a recommendation to the Board of Directors for to request approval to replace current 2008 AquaTech VacTruck with 2022 GapVax VacTruck from Weco Industries for \$492,568.00

Executive Summary

The District currently owns a 2008 AquaVac Truck that is utilized for routine maintenance. This includes but not limited to lift station cleaning, sewer main cleaning and emergency call outs. Currently this truck has less than 13k miles and 2241 hours. The hour meter is not representative of actual hours as this was installed at later date from purchase. The AquaTech Truck is showing signs of unreliability. In the past year we have had one the tandem axles walk inward causing damage to high pressure water line, the hydraulic piston that extends the boom is bent (usable but cannot be fully extended). This has been repaired in the past but has returned recently. Currently the water storage tanks have a small leak from an unknown location. Requires partial tear down.

As of January 1, 2023, the AquaTech Truck will no longer be compliant with DMV Clean Air Regulations. The District has researched possibilities of retrofitting our current truck with a compliant motor and drivetrain along with repairing the equipment. Attached is a minimum quote for that retrofit and repair. Real cost is unknown as full disassembly is required. Also attached are quotes for used VacTucks including demos that are newer but have more miles and hours than our current truck. One of these demo trucks broke and could not showcase its abilities.

Weco Industries brought out a 2014 demo truck. Weco was able to clean one of our hardest to reach lift stations with ease. The District along with Veolia operated the truck and has seen the ease of use firsthand. The simplicity of the controls along with hardware makes it safe and easy to operate. Outside of the heavy equipment, high use wear parts can be replaced and purchased from local part stores. Meaning less downtime and shop fees. The GapVax from Weco has the ability to submerge its suction hose 50' below surface head. This is a unique characteristic, traditional VacTrucks only allow a few inches below surface head at a time. This is beneficial for the District as we are currently in design of a new diffuser. The diffuser design shows access for such equipment like camera, pigging or VacTrucks. Weco Industries could not guarantee that this would work.

From order date to delivery is 9 months to a year.

Fiscal Impact:

Amount Requested \$492,568.00 (price includes tax, and delivery)
Sufficient Budgeted Funds Available?: (If no, see attached fiscal analysis)
Prog/Fund # Category: Pers. Optg. Cap. -or- CIP# Fund#

Previous Relevant Board Actions for This Item

N/A

Attachments

Vactor Truck Proposal
DMV Compliance Clean Air Regulations
Retrofit proposal 15904
Quote 16485
Quote 15933
Quote 15995
Quote 21xxx
Weco MC Overview
Weco Demo Pics

AGENDA ITEM: E-1



Presents a Proposal Summary

of the



2020 Vactor 2100i

2020 Vactor 2100i Machine with Positive Displacement Vacuum System Mounted on a Heavy Duty KW T880 Truck Chassis with 8352 miles and 255 hours

for

Veolia



Pursuant to our recent discussions and on behalf of the employees of Owen Equipment Company, I am pleased to offer you the following proposal for a 2020 Vector 2100i machine with 8352 miles and 255 hours, mounted on a Kenworth T880, 8 x 4 chassis.

Qty	Part Number	Description
1	2112P-18	2100i PD, 18" Vacuum, 12 yrd Debris, Combo
1	2016P	Additional Water, 1300 Gal Total (12 yrd)
1	5002PA	80 GPM/2500 PSI
1	010PSTD	48w x 22h x 24d Curbside Toolbox
1	011PSTD	Aluminum Fenders
1	012PSTD	Mud Flaps
1	014PSTD	Electric/Hydraulic Four Way Boom
1	016PSTD	Color Coded Sealed Electrical System
1	019PASTD	Intuitouch Electronic Package
1	020PSTD	Double Acting Hoist Cylinder
1	025PSTD	Handgun Assembly w/35' x 1/2" Hose w/Quick Disconnects
1	026PSTD	Ex-Ten Steel Cylindrical Debris Tank
1	030PSTD	Flexible Hose Guide
1	032PSTD	(3) Nozzles with Carbide Inserts w/Rack
1	045PSTD	Suction Tube Storage - 4 Pipe
1	046PSTD	1" Nozzle Pipe
1	048PSTD	10' Leader Hose
1	1001PSTD	Flat Rear Door w/Hydraulic Locks
1	1005PSTD	Dual Stainless Steel Float Shut Off System
1	1016PSTD	Microstrainer Prior to Blower
1	1024PSTD	Debris Body Vacuum Relief System
1	1031PSTD	Debris Deflector Plate
1	1033PSTD	60" Dump Height
1	2001PSTD	Low Water Alarm with Water Pump Flow Indicator
1	2011PSTD	3" Y-Strainer at Passenger Side Fill
1	2022PSTD	Additional Water Tank Sight Gauge
1	2023PSTD	Liquid Float Level Indicator
1	3019PSTD	Digital Water Pressure Gauge
1	4006PSTD	Joystick Boom Control
1	4010PSTD	Boom Hose Storage, Post for 5 x 5 Boom
1	5010PSTD	Rodder System Accumulator - Jack Hammer on/off Control w/ manual Valve
1	5011PSTD	3" Y-Strainer @ Water Pump
1	5012PSTD	Performance Package
1	5014PSTD	1" Water Relief Valve
1	5015PSTD	Midship High Pressure Coupling
1	5022PSTD	Side Mounted Water Pump
1	6005PDSTD	Digital Hose Footage Counter
1	6007PSTD	Hose Reel Manual Hyd Extend/Retract
1	6009PSTD	Hose Reel Chain Cover

Ed Hodges
Tel: (707) 237-1020
2 of 7



1	6020PBSTD	Hydraulic Extending 15", Rotating Hose Reel, 1" x 800' Capacity
1	6017PSTD	Hydraulic Tank Shutoff Valves
1	7001PSTD	Tachometer/Chassis Engine w/Hourmeter
1	7003PSTD	Water Pump Hour Meter
1	7004PSTD	PTO Hour Meter
1	7005PSTD	Hydraulic Oil Temp Alarm
1	7007PSTD	Tachometer & Hour meter/Blower
1	8000PSTD	Circuit Breakers
1	8025PSTD	LED Lights, Clearance, Back-up, Stop, Tail & Turn
1	9002PSTD	Tow Hooks, Front
1	9002PSTD	Tow Hooks, Rear
1	9003PSTD	Electronic Back-Up Alarm
1	S390ASTD	8" Vacuum Pipe Package
1	S560STD	Emergency Flare Kit
1	S590STD	Fire Extinguisher 5 Lbs.
1	1003P	Debris Body Washout
1	1008PA	6" Rear Door Knife Valve w/Camloc w/Port & Fixed Basket Screen, 6:00 position
1	1009PD	Full Rear Door Swinging Screen
1	1010PA	Pump Off Ports Only
1	1014P	Centrifugal Separators (Cyclones)
1	1015P	Folding Pipe Rack, Curb side, 8" Pipe
1	1015PA	Folding Pipe Rack, Street side, 8" Pipe
1	1022P	Rear Door Splash Shield
1	1023P	Lube Manifold
1	1023PA	Plastic Lube Chart, included with Lube Manifold
1	1041P	Body-Up Alarm
1	2006P	Air Purge
1	3015PA	Hot Shift Blower Drive (automatic Transmission)
1	3017P	Blower High Temp Safety Shutdown
1	3020P	Digital Water Level Indicator
1	3021P	Debris Body Level Indicator
1	4014P	180 deg. 5 x 5 Extendable/Telescoping Boom
1	4011PB	Belly pack Wireless Controls with hose reel controls, 2-way communications, and LCD Display
1	4013PA	Rotatable Boom Inlet Hose, 5 x 5 Boom
1	5008PB	Cold Weather Recirculator, PTO Driven, 25 GPM
1	5015P	High Pressure Couplers, Front and Rear
1	5021PC	Hydro Excavation Kit - Includes Lances, Nozzles, Storage Tray, and Vacuum Tubes
1	6002P	600' x 1" Aeroquip Sewer Hose 2500 PSI in lieu of STD
1	6004PB	Hose Wind Guide (Dual Roller), Auto, Indexing with Pinch Roller
1	6014P	High Pressured Hose Reel
1	6019P	Rodder Pump Drain Valves
1	6026P	Washington State DOT Legal Front Hose Reel
1	8001PB	Rear Directional Control, Signal Master LED Arrow Stick, 8 Lights

Ed Hodges
Tel: (707) 237-1020
3 of 7



1	8002PA	Waterproof, Rechargeable, Wireless, Handheld, LED Spot Light w/12V Charger and Plug
1	8020PE	Lighting Package, 6 Federal Signal Strobe Lights
1	8028P	Work lights (2), LED, 5 x 5 Boom
1	8029P	Work lights (2), LED, Rear Door
1	8029PA	Work light, LED, Operators Station
1	8029PC	Work light, LED, Curb Side
1	8030P	Hose Reel Wrapped for Delivery
1	9021PB	Camera System, Front, Rear and Both Sides
1	9023PA	Safety Cone Storage Rack - Post Style
1	9070PA	Toolbox, Front Bumper Mounted, 16 x 12 x 18 w/(2) LED Side Markers
1	9071PE	Toolbox, Behind Cab - 16w 30h x 96d
1	9072PB	Toolbox, Driver Side Chassis Frame, 24w x 24h x 24d
1	9074PA	Toolbox, Driver Side Subframe, 18w x 24h x 24d
1	P112STD	Module Paint, DuPont Imron Elite - Sanded Primer Base
1	P124STD	Vactor 2100i Body Decal, Standard
1	LOGO-APPL.	Vactor/Guzzler Logos - Applied
1	500655B-30	Vactor Standard Manual and USB Version - 1 + Dealer
1	31096C-30	1" x 15' Leader Hose Assembly
1	45124-30	(1) Fire Extinguisher
1	2021	Kenworth T880 8 x 4, Chassis VIN - 1NKZXJEX1MJ442587

Chassis Source - Customer Supplied
 Module Paint Match Cab - Yes
 Module Paint Color - Grey
 Module Paint Color Code - 883653EX Match Cab Grey
 Cab Color - Grey
 Cab Color Code - 883653EY Magnetic Met
 Cab Stripe Color - None

PRICE for Unit listed Above, FOB Your Shop, CA..... \$ 459,500.00
DELIVERY AND IN-SERVICE TRAINING INCLUDED
Sales Tax NOT INCLUDED
FETNOT INCLUDED
Licensing and RegistrationNOT INCLUDED

Sales Tax, FET, Licensing and Registration are NOT included

THE PROPERTY HEREIN IS GUARANTEED BY MANUFACTURER'S WARRANTY ONLY AND SELLER MAKES NO WARRANTY EXPRESSED OR IMPLIED, OF MERCHANTABILITY OR OTHERWISE, OR OF FITNESS FOR ANY PARTICULAR PURPOSE, THAT EXTENDS BEYOND THE ABOVE DESCRIPTION OF THE EQUIPMENT.

NOTE: Price is good for 30 days. Cost increases due to the addition of Government mandated safety or environmental devices incurred after the date of this proposal, will be charged to you at our cost. Proof of such costs, if any, will be documented.

TAXES: SALES TAX applicable at time of delivery will be shown on our invoice. FEDERAL EXCISE TAXES, if applicable, will require payment unless a properly executed Exemption Certificate is submitted.

Ed Hodges
 Tel: (707) 237-1020
 4 of 7



DELIVERY: 10-15 DAYS ARO for this unit, subject to prior sale.

TERMS: 10% NON REFUNDABLE DEPOSIT DUE ON ACCEPTANCE. DEPOSIT WILL BE CREDITED TO THE BALANCE WHEN DELIVERY IS MADE. UPON NOTIFICATION OF UNIT DELIVERY CUSTOMER WILL HAVE 10 WORKING DAYS TO PAY IN FULL AND ACCEPT DELIVERY. FAILURE TO PAY IN FULL WITHIN 10 DAY WILL BE GROUNDS TO FORFEIT THE DEPOSIT.

If you have any questions or need additional assistance, please do not hesitate to give me a call at (707) 237-1020.

Sincerely,

Ed Hodges

Ed Hodges
Regional Manager



LIMITED WARRANTY

Limited Warranty. Each TRUVAC machine manufactured by VACTOR MANUFACTURING (or, "the Company") is warranted against defects in material and workmanship for a period of 12 months, provided the machine is used in a normal and reasonable manner and in accordance with all operating, maintenance and safety instructions. In addition, certain machines and components of certain machines have extended warranties as set forth below. If sold to an end user, the applicable warranty period commences from the date of delivery to the end user. If used for rental purposes, the applicable warranty period commences from the date the machine is first made available for rental by the Company or its representative. This limited warranty may be enforced by any subsequent transferee during the warranty period. This limited warranty is the sole and exclusive warranty given by the Company.

STANDARD EXTENDED WARRANTIES (Total Warranty Duration)

HXX and HXX2, Prodigy and Paradigm	10 years against stainless steel water tank leakage due to corrosion. 3 years against aluminum water tank leakage due to corrosion. Nonmetallic water tanks are covered for 5 years against any factory defect in material or workmanship.
HXX and HXX2, Prodigy and Paradigm	5 years against leakage of debris body, centrifugal compressor or fan housing due to rust-through

Exclusive Remedy. Should any warranted product fail during the warranty period, the Company will cause to be repaired or replaced, as the Company may elect, any part or parts of such machine that the Company's examination discloses to be defective in material or factory workmanship. Repairs or replacements are to be made at the selling Company's authorized dealer's or distributor's location or at other locations approved by the Company. In lieu of repair or replacement, the Company may elect, at its sole discretion, to refund the purchase price of any product deemed defective. The foregoing remedies shall be the sole and exclusive remedies of any party making a valid warranty claim.

This Limited Warranty shall not apply to (and the Company shall not be responsible for):

1. Major components or trade accessories that have a separate warranty from their original manufacturer, such as, but not limited to, trucks and truck chassis, engines, hydraulic pumps and motors, tires and batteries.
2. Normal adjustments and maintenance services.
3. Normal wear parts such as, but not limited to, oils, fluids, vacuum hose, light bulbs, fuses and gaskets.
4. Failures resulting from the machine being operated in a manner or for a purpose not recommended or not in accordance with operating, maintenance or safety instructions provided by the Company.
5. Repairs, modifications or alterations without the express written consent of the Company, which in the Company's sole judgment, have adversely affected the machine's stability, operation or reliability as originally designed and manufactured.
6. Items subject to misuse, negligence, accident or improper maintenance.



NOTE The use in the product of any part other than parts approved by the Company may invalidate this warranty. The Company reserves the right to determine, in its sole discretion, if the use of non-approved parts operates to invalidate the warranty. Nothing contained in this warranty shall make the Company liable for loss, injury, or damage of any kind to any person or entity resulting from any defect or failure in the machine.

THIS WARRANTY SHALL BE IN LIEU OF ALL OTHER WARRANTIES, EXPRESS OR IMPLIED, AND TO THE EXTENT PERMITTED, CONFERRED BY STATUTE, INCLUDING WITHOUT LIMITATION, ANY IMPLIED WARRANTIES OF MERCHANTABILITY, OR FITNESS FOR A PARTICULAR PURPOSE, OR ANY WARRANTY AGAINST FAILURE OF ITS ESSENTIAL PURPOSE, ALL OF WHICH ARE DISCLAIMED.

This warranty is in lieu of all other obligations or liabilities, contractual and otherwise, on the part of the Company. For the avoidance of doubt, the Company shall not be liable for any indirect, special, incidental or consequential damages, including, but not limited to, loss of use or lost profits. The Company makes no representation that the machine has the capacity to perform any functions other than as contained in the Company's written literature, catalogs or specifications accompanying delivery of the machine. No person or affiliated company representative is authorized to alter the terms of this warranty, to give any other warranties or to assume any other liability on behalf of the Company in connection with the sale, servicing or repair of any machine manufactured by the Company. Any legal action based hereon must be commenced within eighteen (18) months of the event or facts giving rise to such action.

The Company reserves the right to make design changes or improvements in its products without imposing any obligation upon itself to change or improve previously manufactured products.



VACTOR MANUFACTURING
1621 S. Illinois Street
Streator, IL 61364

DMV Compliance
Verification
Began in 2020

February 2020



A Guide to California's Clean Air Regulations for Heavy-Duty Diesel Vehicles



Gear Up, Breathe Easy

CARB is actively enforcing heavy-duty diesel vehicle regulations in support of California's clean air goals. Enforcement of clean diesel vehicle rules also provides a level playing field for those who have already done their part and are in compliance.

This booklet provides basic information and resources to help take the guesswork out of California's clean truck and bus requirements. If your vehicle does not meet state clean air laws, you could be subject to fines or temporarily lose the ability to operate in California.

Disclaimer

While this booklet is intended to assist vehicle owners with their compliance efforts, it is the sole responsibility of fleets to ensure compliance with all applicable regulations.

MORE INFORMATION

Visit CARB's comprehensive website for more detailed information regarding diesel vehicles and compliance options at arb.ca.gov/truckstop

Para obtener más información en español, por favor visite arb.ca.gov/truckstop/espanol

8666DIESEL@arb.ca.gov

1-866-6DIESEL (1-866-634-3735)

Contents

What diesel rules apply to you?	3
Trucks & Buses	4
Truck & Bus Regulation Compliance Options	5
DMV Compliance Verification Begins in 2020	6
Drayage Trucks	7
Transportation Refrigeration Units	8
Tractors & Box-Type Trailers	9
Other Diesel Programs	10
Diesel Particulate Filter Care & Maintenance	11-12
Funding Assistance	13
Quick Tips	14

What diesel rules apply to you?

Check all diesel rules that apply to you.

- Does your vehicle have a **Gross Vehicle Weight Rating (GVWR) of 14,000+ lbs.?**

See Trucks and Buses (private and federal fleets): page 4
Other rules may apply, see below.

- Is your fleet **publicly owned**, a **solid waste collection vehicle**, or a **transit agency** or **utility**?

See Public Fleets and Others: page 10

- Do you visit **ports or intermodal rail yards**?

See Drayage Trucks: page 7

Do you own or operate a **reefer** (transport refrigeration unit)?

- See Transport Refrigeration Units: page 8

- Do you own or pull **53-foot or longer box-type trailers**?

See Tractors and Box-Type Trailers: page 9

- Do you own a vehicle with a **GVWR of 6,000+ lbs.?**

See Idling Limits: page 10

See Emission Control Labels: page 10

See Heavy-Duty Vehicle Inspection Program: page 10

See Periodic Smoke Inspection Program: page 10

Truck & Bus Regulation

On-road diesel vehicles with a GVWR that is 14,001+ lbs. must reduce exhaust emissions by meeting particulate matter (PM) filter requirements and upgrading to newer engines. Vehicles with 2010 engine model year (EMY) or newer are fully compliant.

Heavier Vehicles with a GVWR greater than 26,000 lbs. must upgrade as shown in the table. Reporting is optional when exclusively using the Engine Model Year schedule for heavier vehicles below.

EMY Schedule for Heavier Vehicles (>26,000 lbs. GVWR)		
EMY	Level 3 PM Filter	2010 EMY by
Pre-1994	Not required	January 1, 2015
1994-1995	Not required	January 1, 2016
1996-1999	January 1, 2012	January 1, 2020
2000-2004	January 1, 2013	January 1, 2021
2005 or newer	January 1, 2014	January 1, 2022
2007-2009	If already equipped	January 1, 2023

Lighter Vehicles with a GVWR between 14,001 and 26,000 lbs. need to be upgraded with 2010 or newer EMY. Check the table to determine your replacement date. Older vehicles may be upgraded to newer used equipment that is still in compliance with the schedule. No retrofit PM filter or reporting is required for lighter vehicles.

For more information call 1-866-6DIESEL (866-634-3735) or visit arb.ca.gov/truckstop

EMY Schedule for Lighter Vehicles (14,001-26,000 lbs. GVWR)	
EMY	2010 EMY by
1995 and older	January 1, 2015
1996	January 1, 2016
1997	January 1, 2017
1998	January 1, 2018
1999	January 1, 2019
2003 and older	January 1, 2020
2004-2006	January 1, 2021
2007-2009	January 1, 2023

Other compliance options may help you comply with the regulation (see page 5). Reporting is required by January 31 of the compliance year to claim any available options.

Compliance Options

Requires reporting in CARB's TRUCRS system

Listed below are the remaining compliance options available for 2019 and future compliance years. If you do not qualify for these options, you must follow the Engine Model Year (EMY) schedule found on page 4.

Low-Use Exemption

The mileage limit is 1,000 miles per year in California. If you have vehicles designed to power other equipment while stationary, the limit is 100 hours per year in California.

Low Mileage Construction Truck Option

Eligible vehicles with a particulate matter filter that don't meet the EMY schedule may operate up to 15,000 miles per year, and up to 20,000 miles for dump trucks. Lighter vehicles can no longer claim this flexibility option. No longer available for opt-in.

Agricultural Vehicle Extension for Replacement Vehicles

Agricultural vehicles that reported for this flexibility option cannot operate more than 10,000 miles per year until January 1, 2023. No longer available for opt-in.

NO_x Exempt Area Extension

The counties that were added to the list of NO_x Exempt Areas under the 2014 amendments have been removed, and a PM filter must already be installed to claim the NO_x Exempt Area Extension.

Retrofit by 2014 and Additional Time for Engine Replacement

Lighter vehicles with pre-2000 model year engines and heavier vehicles with pre-1996 model year engines that were retrofit by January 1, 2014 **and** reported to use this compliance option have until January 1, 2020 to delay engine replacement. If **all** the vehicles in your fleet had a diesel particulate filter by January 1, 2014, they may operate until January 1, 2023. No longer available for opt-in.

Options No Longer Available

- Heavy Cranes Phase-In Option.
- The twenty-five percent annual vehicle upgrade limit.
- Cattle livestock trucks are no longer eligible for Specialty Ag Extension.

Note that the 2017 Lawson Lawsuit impacted many of the previously existing options and deadlines, and many are no longer available or have expired.

DMV Compliance Verification Began in 2020

A new enforcement tool ensure that vehicles subject to CARB's Truck and Bus Regulation must meet the health-based requirements of that rule prior to obtaining registration through the California DMV. As of January 1, 2020, the DMV cannot register any vehicle that does not meet the requirements of the Truck and Bus Regulation.

2020 DMV Registration Requirements

You must be in compliance with the Truck and Bus Regulation in one of the following ways in order to register your vehicle with the DMV:

- The vehicle is using an allowable compliance option **and** is reported into the TRUCRS reporting system
- The vehicle is compliant with the Engine Model Year Schedule (see page 4)
- The vehicle is equipped with a 2010 or newer model year engine (usually a 2011 or newer model year vehicle) OR is repowered with 2010 or newer model year engine

Currently out of compliance?

CARB can issue DMV registration blocks now if your vehicle does not meet air quality requirements.



Drayage Trucks

Diesel-fueled trucks transporting cargo destined for or coming from California’s ports and intermodal rail yards (including bobtails and transporting chassis) must be registered in the statewide Drayage Truck Registry prior to entry. Drayage fleets must comply with requirements by operating only vehicles with 2007 MY engines or newer.

Drayage Compliance Schedule (GVWR 26,001 lbs. or more)	
Truck Engine Model Year	Emission Requirements
2006 and older	Not allowed
2007-2009	Compliant through 2022
2010 and newer	Fully compliant



By January 1, 2023, all class 7 and 8 diesel-fueled drayage trucks must have 2010 or newer engines. Trucks with 2010 or newer engines are fully compliant with both the Truck and Bus and Drayage regulations.

The exchange of marine or rail cargo (e.g. containers) between compliant and noncompliant drayage trucks is not allowed anywhere in California.

Note: If you are considered exempt from the Drayage Truck Regulation, you are currently subject to the Truck and Bus Regulation.

Drayage Truck Regulation

1-888-247-4821 | arb.ca.gov/drayagetruck

Transport Refrigeration Units (Reefers)

All transport refrigeration units (TRU) and TRU generator sets that operate in California must meet the in-use performance standards (see compliance table below).



Every California-based TRU and TRU generator set must be registered in Air Resources Board Equipment Registration (ARBER) and be labeled with a CARB Identification Number.

All terminals that are located in California where TRUs are based must submit operator reports to CARB at arber.arb.ca.gov.

TRU and TRU Generator Set Compliance Schedule		
Engine Model Year	Low-Emission TRU (50% PM Reduction)	Ultra-Low-Emission TRU (85% PM Reduction)
2001 or older	December 31, 2009	December 31, 2015
2002	December 31, 2009	December 31, 2016
2003	December 31, 2010	December 31, 2017
2004 (<25 hp)	December 31, 2011	December 31, 2018
2004 (>25 hp)	Not Applicable	December 31, 2011
2005 and newer	Not Applicable	December 31 st of the model year plus 7 years

Fleets may comply by using Alternative Technologies (e.g. hybrid-electric TRUs or TRUs equipped with electric standby) or retrofitting with a verified diesel particulate filter. For guidance on using electric standby and hybrid-electric TRUs as an Alternative Technology compliance option, visit arb.ca.gov/diesel/tru/documents/guidance_electricstandby_ets.pdf.

All businesses that hire carriers (e.g. brokers, shippers and receivers) must only use carriers that supply compliant TRUs.

Transport Refrigeration Unit Regulation Helpline

1-888-TRU-ATCM (1-888-878-2826) | arb.ca.gov/diesel/tru/tru.htm

Tractors & Box-type Trailers

The Tractor-Trailer Greenhouse Gas Regulation applies to 53-foot or longer box-type trailers and 2013 MY or older heavy-duty tractors that pull these trailers.

Low-Rolling Resistance Tire Requirements*

	Tractors	Trailers
2013 and older MY	Required	Required
2014 and newer MY	N/A	Required



* Must be SmartWay™-certified.



Tractor Requirements

All 2011 through 2013 MY sleeper-cab tractors must be SmartWay™ designated models. 2014 MY or newer tractors are covered by a federal regulation and are exempt from this rule.



Trailer Aerodynamic Requirements

All trailers must be either SmartWay™-certified or aerodynamically retrofitted to a minimum standard.

Delays and Exemptions

Certain trucks subject to the Transportation Refrigeration Unit (TRU) rule can phase in tire and aerodynamic requirements from 2018 to 2020. This only applies to TRUs with 2003 to 2009 MY reefer trailers equipped with 2003 or newer TRU engines.

Fleets must register to take advantage of short haul, local haul or storage trailer exemptions, and to apply for temporary use passes.

For more information, visit arb.ca.gov/tractortrailer_ghg

For a listing of SmartWay™-certified technologies, visit arb.ca.gov/cc/hdghg/technologies.htm

Other Diesel Programs

CARB continues to actively enforce long-standing requirements for diesel vehicles including:

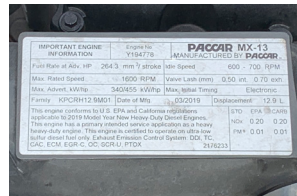
Idling Limits

Idling Limits restrict diesel vehicles from idling more than five minutes. Idling in school zones is not allowed, with limited exceptions. arb.ca.gov/noidle



Emission Control Labels

Emission Control Labels must be affixed to engines of all commercial heavy-duty diesel vehicles, and must be legible as proof the engine, at minimum, meets U.S. federal emissions standards for the engine model year.



Periodic Smoke Inspection Program

The Periodic Smoke Inspection Program requires owners of California-based fleets of two or more diesel vehicles to perform annual smoke opacity tests and to keep records for at least two years for each vehicle. The requirement does not apply to cars or trucks that must undergo a Smog Check.



Heavy-Duty Vehicle Inspection Program

The Heavy-Duty Vehicle Inspection Program uses random roadside inspections to verify that diesel engines do not smoke excessively and are tamper-free.

arb.ca.gov/enf/hdvip/hdvip.htm



Public Fleets and Others

Vehicles with a GVWR of 14,001+ lbs. that are owned by state and local government fleets, private utilities, and solid waste collection vehicles, must already have particulate matter (PM) filters (retrofit or originally equipped).



Soot Filter: Buyer Beware



Use only CARB-verified soot filters!

Selecting and installing the right CARB-verified diesel particulate filter (DPF), also known as a soot filter, for your truck takes time. If your filter is not installed by January 1st of the applicable compliance year, or ordered four months prior to the deadline, then you may be in violation. Visit arb.ca.gov/truckstop and select “Engine Filters” for details.

Be aware, filters must be verified for use on your vehicle. Used filters are not compliant and may damage your engine.

Compliance options that utilize new filter installation are limited. Therefore, installation of a filter without being aware of the available options may result in a non-compliant vehicle. Make sure you understand your compliance options.

The emissions performance of every DPF technology has been verified by CARB through rigorous testing. Keep in mind that a DPF is not a “fit and forget” device. Protect your DPF and engine by paying attention to a few simple but important maintenance requirements.

Resolving DPF-Related Problems

While a DPF undergoes a rigorous verification process prior to sale, occasional problems may arise. Use the following three-step protocol to resolve DPF-related performance or reliability problems:

- Contact your installer (most problems are resolved in this manner)
- Contact the device manufacturer (if the installer cannot resolve your complaint)
- Contact CARB at 866-6DIESEL or 8666DIESEL@arb.ca.gov (if the installer or manufacturer cannot resolve your complaint).

Diesel Particulate Filter Care & Maintenance

Vehicle Maintenance is Critical

Top-notch vehicle engine maintenance is required. Remember to check fuel injectors, air filters, turbo chargers, fuel filter, fuel, coolant and lube oil. Failure to maintain the engine can void the DPF warranty!

Don't Ignore the DPF Monitoring System

The cab of the truck features a monitoring system for the DPF that includes several indicator lights that give important feedback on DPF operation. The operator must understand and observe the DPF indicator lights on a regular basis and respond accordingly.

Maintain the Proper Engine Duty Cycle

The duty cycle is the daily pattern of engine use. If the duty cycle of a truck is changed, it may affect how the filter works, and can lead to plugging. Notify your installer if you change the way you use your vehicle and be aware that it may affect the way your filter functions.

Understand Your DPF's Regeneration System

The soot collected by the DPF must eventually be removed to keep the filter from clogging. The process of burning the soot in the filter is called regeneration and is done using high temperatures for a specified amount of time. Your truck is equipped with either a passive system that cleans the DPF automatically or an active system that may work automatically or require driver intervention to start a regeneration cycle.

Handle the Filter with Care

DPFs are commonly made of ceramic, so do not bang or tap on your filter. A cracked or damaged filter may not be compliant with the Truck and Bus Regulation and could be a citable violation.

DPF Cleaning Basics

The DPF is a maintenance item. It must be removed and cleaned periodically to get rid of accumulated noncombustible ash from the filter. Ash removal is separate from regeneration. Only use filter cleaning procedures approved by the DPF manufacturer.

A guide to operating your DPF is available at arb.ca.gov/truckstop or by contacting (866) 6DIESEL or 8666DIESEL@arb.ca.gov.

Funding Assistance

Grant funding is very limited but may be available to help fleets and individuals comply with California regulations earlier than is required.

Funding is available for vehicle replacements, retrofits, and zero-emission technologies. Please contact the local air district where you are based to determine if you are eligible for funding or if an opportunity may become available in the future. One example is the Funding Agricultural Replacement Measures for Emission Reductions (FARMER) Program, which provides funding through local air districts for agricultural harvesting equipment, heavy-duty trucks, agricultural pump engines, tractors, and other equipment used in agricultural operations.

CARB's loan assistance program (PLACE) helps small businesses with vehicles that operate at least 50 percent of the time in California. The program connects truckers to participating lenders to help purchase trucks, PM filters, aerodynamic retrofits or low-rolling resistance tires.

More information is available at arb.ca.gov/loanassist

Equipment owners are encouraged to apply as early as possible to maximize potential funding options. See the Financial Assistance section on the TruckStop website for more funding information.



Quick Tips

- All fleet owners who use compliance options must report information about all eligible vehicles in the California fleet into the Truck Regulation Up-load, Compliance, and Reporting System (TRUCRS). The reporting period is open from January 1st to January 31st of the compliance year.
- Records must be kept and provided upon request to demonstrate compliance with flexibility options claimed in the reporting system.
- The Truck and Bus Regulation is based on the **model year of the engine**. Generally, the model year of an engine is one year older than the vehicle model year. For example, a 2007 truck is likely to have a 2006 engine model year.
- Vehicles that operate less than 1,000 annual miles within California can qualify for the low-mileage usage exemption. Odometer readings must be reported annually to CARB.
- Selecting and installing a diesel particulate filter (DPF), also known as a soot filter, for your truck takes time. Make sure to use only **CARB-verified** soot filters.
- The gross vehicle weight rating (GVWR) is assigned by the vehicle manufacturer and represents the maximum weight of the vehicle and what it can carry when fully loaded. Check the driver's door jam for the **GVWR label**. The GVWR is **not** the same as the unladen weight, gross combined weight rating, or registered weight rating.
- The **Engine (Emission) Family Name (EFN)** can be found on the emission control label located on the engine. The EFN is typically 10 to 12 characters, however very old engines may have an EFN only a few characters long.
- Be aware that tampering with your engine odometer can put you out of compliance with engine certification requirements and the Truck and Bus Regulation.

Not sure if your diesel truck, bus or equipment complies with California air quality regulations?



Register & Report



Use the TruckStop to find out what you need to do to comply and avoid penalties.

Training



Sign up for free live training classes.

FAQs



See questions and answers from our diesel hotline generated by truckers like you.

Videos



View short videos that explain diesel requirements and reporting systems.

DPF



Find out about diesel particulate filters.

Funding



Financial assistance may be available to help clean up your trucks, buses and equipment.

Answers



Visit the TruckStop at arb.ca.gov/truckstop



Date: 2/11/2021
Branch: 1700

Kenworth T880

Veolia - Discovery Bay
17501 Highway 4
Discovery Bay, CA 94505
302-420-8733

PROPOSAL ID: 15904

DOHENYCOMPANY.COM

CHASSIS

· 2022 Kenworth T880 Series Conventional Chassis, Paccar MX-13 455 HP Engine, Allison 4000RDS 6-Speed Automatic Transmission

Purchase Price to Include:

Function test unit prior to disassembly to confirm all functions are operational. Drain all fluids on module and disconnect hydraulic hoses, electrical, and water connections to chassis. Disassemble hose reel and boom to component level. Remove debris tank, water tanks, blower, water pump, and any remaining components from subframe. Remove subframe. Sand, prep, primer, and paint all metal components. Measure and inspect blower, repair as needed. Drill new chassis frame to accept subframe, blower, and transfer case. Reassemble boom and hose reel including new 600' rodder hose and leader hose. Install debris tank, boom, and hose reel. Install new PTO and connect all electrical, hydraulic, and water lines. Install water tank and remaining components. Make new drivelines for transmission to transfer case, transfer case to rear axles, and transfer case to blower. Program Cummins engine to allow for secondary throttle controls and Allison transmission to all stationary work and 4:4 lockup. Reassemble any remaining components. Fill hydraulic, transfer case, blower, and water pump oils. Fully function test system to operational limitations.

Includes all new hydraulic and water hoses, replacement of leaking water tank, and installation of new digital footage counter (\$5500), and standard nozzle set.

****Unit was inspected prior to estimate, additional repairs or charges may apply once the unit is disassembled and inspected at an individual component level. Any additional repairs will be quoted and approved prior to proceeding.****

Debris tank will be thickness tested prior to JDC committing to chassis swap, customer to determine if thickness is sufficient if below OEM spec of .25"

Estimated completion time 8 weeks from receipt of unit

Sale Price:	\$ 248,500.00
Transport Charge:	\$ <u>7,000.00</u>
TOTAL:	\$ <u>255,500.00</u>

Thank you for your consideration of this proposal.

Sincerely yours,

Stephanie Prescott

Stephanie Prescott
Regional Sales Representative
760-644-5147
StephaniePrescott@dohenycompany.com

This proposal becomes a contract for delivery and payment of the merchandise listed above only when signed by the customer or one of its officers.

Customer: _____

By: _____

Date: _____

Terms and Conditions

- *Acceptance of this Proposal is subject to availability of the Equipment listed above.*
- *Sales Price does not include any applicable sales taxes. Buyer is responsible for and agrees to pay all applicable sales tax.*
- *The Sale of New Equipment Terms and Conditions are incorporated into and made a part of this Proposal upon acceptance and execution of this Proposal by both parties.*
- *Execution of this Proposal by Seller and Buyer constitutes a binding agreement between the parties.*
- *If this Proposal is not executed by both parties within thirty (30) calendar days from the Proposal Date, this Proposal shall become null and void, unless subsequently executed by both Buyer and Seller.*



JACK DOHENY COMPANY - ANTIOCH

1700 VERNE ROBERTS CIRCLE
Antioch CA 94509

SALES QUOTE

Sold To:
MISCELLANEOUS SALES
DO NOT MAIL
Northville MI 48167

Ship To:
City of Discovery Bay
1800 Willow Lake Road
Discovery Bay CA 94505

INFORMATION

Quote Number:	1239	Customer Code:	MISC0001
Revision No:	2	Site Code:	
Date:	5/6/2021	Contact:	
Sales Rep:	STEPHANIE PRESCOTT	Contact Phone:	925/634-1131
Sales Rep Phone :	760-644-5147	Equipment Location:	NORTHVILLE
Sales Rep Email :	StephaniePrescott@dohenycompany.com	Miles:	19000
		Engine Hours:	1687
		Terms:	RENTAL AS IS/NO WARRANTY

DETAILS

Equipment#	Year	Make	Model	Unit Price	Qty	Sales Value
16485	2019	VACTOR	2100I	\$399,999.00	1	\$399,999.00

Total: \$399,999.00

Signature: _____

Name: _____

Date: _____

Sale of Equipment Terms and Conditions are attached.
Sales Value may not include transport or any applicable sales taxes.
Buyer is responsible for and agrees to pay all applicable sales taxes and transport.



925-777-0944
info@dohenycompany.com
dohenycompany.com



VACTOR 2115 Combination Sewer Cleaner

EQ #:16485 Specs

PRODUCT DESCRIPTION

- 2019 Vactor 2100i with Roots 824-18" Hg. Blower, 15 Yard Debris body, 1500 Gallons of Fresh Water

STANDARD FEATURES

- 48" x 22" x 24" Curb Side Aluminum Toolbox
- Aluminum Fenders
- Mud Flaps
- Electric/Hydraulic Four Way Boom
- Color Coded Sealed Electrical System
- Remote Pendant Control w/35' Cord
- Intuitouch Electronic Package
- Double Acting Dump Hoist Cylinder
- Handgun Assembly w/35' x 1/2" Hose w/Quick Disconnects
- 3" Y-Strainer at Water Pump Inlet
- Ex-Ten Steel Cylindrical Debris Tank
- Flexible Hose Guide
- 30 Deg. Sand Nozzle w/Carbide Inserts
- 30 Deg. Sanitary Nozzle w/Carbide Inserts
- 15 Deg. Penetrator Nozzle w/Carbide Inserts
- Nozzle Storage Rack
- Vacuum Tube Storage: Curbside (2) Pipe, Rear Door (2) Pipe
- 1" Nozzle
- 10' Leader Hose
- Flat Rear Door w/Hydraulic Locks and Door Power-up/Down, Open/Close Feature
- Dual 10" Stainless Steel Float Shut Off System/Rear Mounted
- Debris Body Vacuum Relief System
- Debris Deflector Plate
- 60" Dump Height
- Water Sight Gauge DS/PS
- Liquid Float Level Indicator
- Boom Transport Post Storage
- 2000 PSI Water Pressure
- 3" Y-Strainer @ Water Pump w/3" Drain Valve
- Performance Package: (Hyd Variable Flow, Dual PTO's. Dual Hyd. Pumps)
- Stainless Steel Microstrainer
- Blower Air Shift Controls
- Hydraulic Cooling Package
- Midship Handgun Coupling
- Side Mounted Water Pump
- Hose Wind Guide (Dual Roller)
- Hose Footage Counter - Mechanical
- Hose Reel Manual Hyd. Extend/Retract
- Hose Reel Chain Cover (Full)
- Tachometer/Chassis Engine W/Hourmeter
- Circuit Breakers
- LED Lights. Clearance, Back-Up, Stop, Tail & Turn

- Tow Hooks, Front and Rear
- Electronic Back-Up Alarm
- Hydraulic Tank Shutoff Valves
- 8" Vacuum Pipe Package
- Emergency Flare Kit
- Fire Extinguisher 5 Lbs.
- Low Water Alarm with Water Pump Flow Indicator
- Front Joystick Boom Control
- Digital Hose Footage Counter
- Water Pump Hour Meter
- PTO Hour Meter
- Camera System, Rear Only
- Digital Water Pressure Gauge

ADDITIONAL FEATURES

- Roots 824-18" Hg. Blower
- 180 Degree Rotation, 10 Ft. Hydraulic Telescoping Boom, Front Loading 8" Suction Hose
- 100 GPM Variable Flow Water System
- 1" x 600' Piranha Sewer Hose, 2500 PSI
- Hydraulic Extending/Rotating 15" Hose Reel (1" x 800') Capacity
- Debris Body Flush Out System
- 6" Knife Valve w/Cam-Loc, Rear Door, 3:00 Position
- Pump Off Ports and Programming
- Internal Body Screen with Pump Off Ports Only
- Centrifugal Separators
- Folding Pipe Rack, Curbside
- Folding Pipe Rack, Streetside
- Rear Door Splash Shield
- Lube Manifold
- Plastic Lube Chart
- Debris Body Inspection Port w/Ladder
- Air Purge
- Hot Shift Blower Drive
- Wireless Controls, including hose reel controls
- Cold Weather Recirculator, PTO Driven, 25 GPM
- Rodder System Accumulator- Jack Hammer on/off control w/ manual valve
- Handgun Couplers, Front and Rear
- Hydro Excavation Kit - Includes Lances, Nozzles, Storage Tray, and Vacuum Tubes
 - 50' x 1/2" Hose Reel Spring Loaded - Mounted Curbside Midship
 - 50' x 1/2" 2500 PSI Hose with 10,000 PSI Burst Pressure
 - Earth Quaker plus excavation gun with 3' extension
 - Nozzle Package to Include:
 - Rotating / Spinner Nozzle (Turbo Nozzle)
 - 2 Tip Low Flow Nozzle
 - 3 Tip High Flow Nozzle
 - Adjustable through multi-flow - from 2-23 gpm
- Cyclone Washout System
- Rodder Hose Pinch Roller
- High Pressured Hose Reel
- Rodder Pump Drain Valves
- Hydraulic Oil Temp Alarm
- Rear Directional Control, Signal Master LED Arrow Stick, 8 Lights
- Waterproof, Rechargeable, Wireless, Handheld, LED Spot Light w/12V Charger and Plug
- Revolving LED Beacon, Rear Federal Signal SLR Series, Amber
- 14 Lighting Package, 14 Federal Signal Strobe Lights, LED
- Worklights (2), LED, Telescoping Boom
- Toolbox, Front Bumper Mounted, 16 x 12 x 18 w/(2) LED Side Markers
- Toolbox, Behind Cab
- Toolbox, Driver Side Chassis Frame, 24w x 24h x 24d
- Safety Cone Storage Rack - Post Style
- Digital Water Level Indicator
- Debris Body Level Indicator
- Blower High Temperature Safety Shutdown
- Hose Reel Storage

SPECIALTY SYSTEM OPTIONS

- 3" Trash Pump

PAINT

- Module Paint, Dupont Imron Elite - Sanded Primer Base
- Module Paint Color: White
- Cab Paint Color: White
- Vactor 2100i Body Decal - Multi-Colored

CHASSIS

- 2019 Kenworth T880 6x4 Tandem Axle Chassis, Cummins X15-450, 450HP Engine and Allison 4000 RDS Automatic Transmission

SALE OF USED EQUIPMENT TERMS AND CONDITIONS

1. **THE AGREEMENT.** Jack Doheny Companies, Inc., (the "Seller") agrees to sell, transfer and convey its right, title and interest in the used goods, equipment, vehicles and other used items (collectively, the "Equipment") described in Seller's written Proposal for the Sale of Used Equipment (the "Proposal") to the Buyer subject to the terms and conditions contained herein, which are incorporated into the Proposal, agreed to by the parties hereto, and consists of the entire agreement between the Seller and Buyer (collectively, the "Agreement"). The Agreement shall be for the benefit of the Seller and Buyer and not for the benefit of any other person or entity. Prior courses of dealing, trade usage and verbal agreements not reduced to a writing signed by the Seller and Buyer, to the extent they differ from, modify, add to or change from the Agreement shall not be binding on the Seller.
2. **TERMS OF PAYMENT.**
 - 2.1 **Payment Date.** All payments for the Equipment are due from Buyer on the date of the invoice unless other terms are agreed to in writing between the Seller and Buyer. Payment shall be made to Seller at the address specified in the Agreement, without any offset or deduction for any reason.
 - 2.2 **Shipping Delays.** If any shipment is delayed at the request of Buyer, payment shall become due based on the date Seller is prepared to make shipment, and Seller may invoice Buyer based on such date. All prices for Equipment are F.O.B. Seller's shipping point.
 - 2.3 **Delinquent Payments.**
 - 2.3.1 Any payment not made by Buyer on or before its due date shall be subject to a late charge on any unpaid balance at a rate of 18% per annum, or the highest interest rate allowed by law, whichever is greater.
 - 2.3.2 If a payment is not made on or before its due date, Buyer agrees that Seller may elect, in addition to any other remedy at law or in equity, to cease performance under the Agreement and any other agreement between Buyer and Seller until such payment is rendered to Seller .
3. **DELIVERY.** Seller does not guarantee delivery dates.
4. **RISK OF LOSS.** Buyer assumes all risk of loss of Equipment upon delivery by Seller to carrier if Equipment is shipped. For Equipment that is shipped, Seller agrees to: (a) prepare the Equipment for shipment to Buyer; (b) deliver custody of the Equipment to carrier; (c) make appropriate arrangements for the transportation to carrier; and deliver documents to enable Buyer to obtain possession of the Equipment. Seller shall not be obligated to obtain insurance or to prepay transportation/carrier costs for the Equipment. Buyer agrees to be responsible for and to timely pay all loading, unloading and other charges incidental to transportation of the Equipment. Whether Seller pays transportation charges or not, risk of loss shall pass to Buyer upon delivery of the Equipment to a carrier.
5. **NO WARRANTY/AS IS SALE.** Buyer has inspected the Equipment and is satisfied with the Equipment's condition. THE SALE OF THE EQUIPMENT IS "AS- IS" WITH NO EXPRESS OR IMPLIED WARRANTIES OF ANY KIND, INCLUDING WITHOUT LIMITATION ANY IMPLIED WARRANTY OF MERCHANTABILITY OR FITNESS FOR A PARTICULAR PURPOSE, ALL OF WHICH ARE HEREBY SPECIFICALLY DISCLAIMED. IN NO EVENT SHALL SELLER BE LIABLE FOR INCIDENTAL, CONSEQUENTIAL, SPECIAL OR PUNITIVE DAMAGES, INCLUDING WITHOUT LIMITATIONS, LOSS OF REVENUES, PROFITS OR RECALL EXPENSES.
6. **INDEMNIFICATION.** Buyer shall indemnify, hold harmless and release Seller from any and all liabilities, losses, damages, claims, costs and expenses, including attorney fees, arising out of, in whole or in part, from (a) the design or manufacture of the Equipment, or (b) the use of the Equipment by Buyer and those acting on Buyer's behalf.
7. **MISCELLANEOUS.**
 - 7.1 **No Assignment.** There shall be no assignment of the Agreement by Buyer without the prior written approval of Seller. Any assignment of the Agreement shall not relieve Buyer of its obligations under the Agreement.
 - 7.2 **Force Majeure.** Neither party will be liable for any delay or failure to perform its obligations hereunder, other than a payment obligation, due to any cause beyond its reasonable control including without limitation, acts of God or of the public enemy, including terrorists, acts of the government in its sovereign capacity, fires, floods, epidemic, strikes, picketing or boycotts, or any other circumstances caused by natural occurrences or third party actions beyond the reasonable control and without the fault or negligence of the party whose performance is affected ("Force Majeure Events"); provided that the affected party provides the other party prompt notice of the applicable circumstance and uses commercially reasonable efforts to re-commence performance as promptly as possible; provided, further, that if the duration of such Force Majeure Event exceeds thirty (30) days, the other party may terminate the Agreement upon delivery of written notice to the affected party.
 - 7.3 **Venue.** The parties agree that any dispute under the Agreement shall be brought in the applicable state or federal court located in the county in which the Originating Office is located and the parties waive any right to a jury trial.
 - 7.4 **Construction and Captions.** The parties acknowledge that each has reviewed the Agreement and that the normal rules of construction to the effect that any ambiguities are to be resolved against the drafting party shall not be employed in the interpretation of the Agreement or any exhibits or amendments hereto ; and that section headings appearing in the Agreement are for convenience of reference only and they are not intended, to any extent or for any purpose, to limit or define the text of any section or any subsection hereof. In the event any part of the Agreement is found to be ambiguous, such ambiguity shall not be construed against any party.
 - 7.5 **Entire Agreement.** The Agreement constitutes the sole and entire agreement between the parties and supersedes all prior and contemporaneous statements , promises, understandings or agreements, whether written or oral.
 - 7.6 **Amendments.** The Agreement may be amended, modified or altered at any time upon the approval of the Seller and Buyer; however, any such amendment must be in writing and signed by the Seller and Buyer in order for such amendment to be of any force and effect.
 - 7.7 **Partial Invalidity.** In the event that any provision of the Agreement is declared by any court of competent jurisdiction or any administrative judge to be void or otherwise invalid, all of the other terms, conditions and provisions of the Agreement shall remain in full force and effect to the same extent as if that part declared void or invalid had never been incorporated in the Agreement and in such form, the remainder of the Agreement shall continue to be binding upon the parties.
 - 7.8 **Counterparts.** The Agreement and any amendment thereto may be signed and executed in one or more counterparts, each of which shall be deemed an original and all of which together shall constitute one Agreement. Delivery of an executed counterpart of a signature page of the Agreement by facsimile or email shall be effective as delivery of an originally executed counterpart of the Agreement.
 - 7.9 **Authority.** Each person(s) executing the Agreement as an agent or in a representative capacity warrants that he or she is duly authorized to do so .

SALE OF NEW EQUIPMENT TERMS AND CONDITIONS

1. **THE AGREEMENT.** Jack Doheny Companies, Inc., (the "Seller") agrees to sell, transfer and convey its right, title and interest in the new goods, equipment, vehicles and/or other new items (collectively, the "Equipment") described in Seller's written Invoice for the Sale of New Equipment (the "Invoice") to the Buyer subject to the terms and conditions contained herein, which are incorporated into the Invoice, agreed to by the parties hereto, and together consists of the entire agreement between the Seller and Buyer (collectively, the "Agreement"). The Agreement shall be for the benefit of the Seller and Buyer and not for the benefit of any other person or entity. Prior courses of dealing, trade usage and verbal agreements not reduced to a writing signed by the Seller and Buyer, to the extent they differ from, modify, add to or change from the Agreement shall not be binding on the Seller.
2. **TERMS OF PAYMENT.**
 - 2.1 **Payment Date.** All payments for the Equipment are due from Buyer on the date of the invoice unless other terms are agreed to in writing between Seller and Buyer. Payment shall be made to Seller at the address specified in the Agreement, without any offset or deduction for any reason.
 - 2.2 **Shipping Delays.** If any shipment is delayed at the request of Buyer, payment shall become due based on the date Seller is prepared to make shipment, and Seller may invoice Buyer based on such date. All prices for Equipment are F.O.B. Seller's shipping point.
 - 2.3 **Delinquent Payments.**
 - 2.3.1 Any payment not made by Buyer on or before its due date shall be subject to a late charge on any unpaid balance at a rate of 18% per annum, or the highest interest rate allowed by law, whichever is greater.
 - 2.3.2 If a payment is not made on or before its due date, Buyer agrees that Seller may elect, in addition to any other remedy at law or in equity, to cease performance under the Agreement and any other agreement between Buyer and Seller until such payment is rendered to Seller.
3. **DELIVERY.** Seller does not guarantee delivery dates.
4. **RISK OF LOSS.** Buyer assumes all risk of loss of Equipment upon delivery by Seller to carrier if Equipment is shipped. For Equipment that is shipped, Seller agrees to: (a) prepare the Equipment for shipment to Buyer; (b) deliver custody of the Equipment to carrier; (c) make appropriate arrangements for the transportation to carrier; and deliver documents to enable Buyer to obtain possession of the Equipment. Seller shall not be obligated to obtain insurance or to prepay transportation/carrier costs for the Equipment. Buyer agrees to be responsible for and to timely pay all loading, unloading and other charges incidental to transportation of the Equipment. Whether Seller pays transportation charges or not, risk of loss shall pass to Buyer upon delivery of the Equipment to a carrier.
5. **INSPECTION OF EQUIPMENT.** Buyer has inspected the Equipment and is satisfied with the Equipment's condition.
6. **INDEMNIFICATION.** Buyer shall indemnify, hold harmless and release Seller from any and all liabilities, losses, damages, claims, costs and expenses, including attorney fees, arising out of, in whole or in part, from (a) the design, or manufacture of the Equipment; or (b) the use of the Equipment by Buyer and those acting on Buyer's behalf.
7. **MISCELLANEOUS.**
 - 7.1 **No Assignment.** There shall be no assignment of the Agreement by Buyer without the prior written approval of Seller. Any assignment of the Agreement shall not relieve Buyer of its obligations under the Agreement.
 - 7.2 **Force Majeure.** Neither party will be liable for any delay or failure to perform its obligations hereunder, other than a payment obligation, due to any cause beyond its reasonable control including without limitation, acts of God or of the public enemy, including terrorists, acts of the government in its sovereign capacity, fires, floods, epidemic, strikes, picketing or boycotts, or any other circumstances caused by natural occurrences or third party actions beyond the reasonable control and without the fault or negligence of the party whose performance is affected ("Force Majeure Events"); provided that the affected party provides the other party prompt notice of the applicable circumstance and uses commercially reasonable efforts to re-commence performance as promptly as possible; provided, further, that if the duration of such Force Majeure Event exceeds thirty (30) days, the other party may terminate the Agreement upon delivery of written notice to the affected party.
 - 7.3 **Venue.** The parties agree that any dispute under the Agreement shall be brought in the applicable state or federal court located in the county in which the Originating Branch is located and the parties waive any right to a jury trial.
 - 7.4 **Construction and Captions.** The parties acknowledge that each has reviewed the Agreement and that the normal rules of construction to the effect that any ambiguities are to be resolved against the drafting party shall not be employed in the interpretation of the Agreement or any exhibits or amendments hereto; and that section headings appearing in the Agreement are for convenience of reference only and they are not intended, to any extent or for any purpose, to limit or define the text of any section or any subsection hereof. In the event any part of the Agreement is found to be ambiguous, such ambiguity shall not be construed against any party.
 - 7.5 **Entire Agreement.** The Agreement constitutes the sole and entire agreement between the parties and supersedes all prior and contemporaneous statements, promises, understandings or agreements, whether written or oral.
 - 7.6 **Amendments.** The Agreement may be amended, modified or altered at any time upon the approval of the Seller and Buyer; however, any such amendment must be in writing and signed by the Seller and Buyer in order for such amendment to be of any force and effect.
 - 7.7 **Partial Invalidity.** In the event that any provision of the Agreement is declared by any court of competent jurisdiction or any administrative judge to be void or otherwise invalid, all of the other terms, conditions and provisions of the Agreement shall remain in full force and effect to the same extent as if that part declared void or invalid had never been incorporated in the Agreement and in such form, the remainder of the Agreement shall continue to be binding upon the parties.
 - 7.8 **Counterparts.** The Agreement and any amendment thereto may be signed and executed in one or more counterparts, each of which shall be deemed an original and all of which together shall constitute one Agreement. Delivery of an executed counterpart of a signature page of the Agreement by facsimile or email shall be effective as delivery of an originally executed counterpart of the Agreement.
 - 7.9 **Authority.** Each person(s) executing the Agreement as an agent or in a representative capacity warrants that he or she is duly authorized to do so.

NO WARRANTY. SELLER MAKES NO WARRANTIES OR REPRESENTATIONS EXPRESS OR IMPLIED BY OPERATION OF LAW OR OTHERWISE, INCLUDING WITHOUT LIMITATION, ANY IMPLIED WARRANTY OF MARKETABILITY OR FITNESS FOR PARTICULAR PURPOSE, ALL OF WHICH ARE SPECIFICALLY HEREBY DISCLAIMED. To the extent allowed by law and those agreements, Seller transfers and assigns to Buyer the Equipment manufacturer's warranties, if any such warranty is provided by the Equipment manufacturer. In no event shall Seller be liable to Buyer for any incidental, consequential, special, exemplary, and/or punitive damages, including without limitations, loss of revenue or profit.



INVOICE INFORMATION

Sold to:

Name _____

Address _____

Contact _____

Phone # _____

Email Address: _____

Ship to:

Name _____

Address _____

Contact _____

Phone # _____

Email Address _____

PLEASE SELECT TYPE OF BUSINESS

Environmental _____ Petro Chemical _____ Gas & Oil _____ Sewer & Water _____

Industrial Plant _____ Utility _____ Municipal _____ Other _____

Customer Signature:



777 Doheny Drive
Northville, MI 48167

t 248-349-0904
p 248-349-2774

TITLE INFORMATION FORM

Must be typed. Please ensure accurate information provided with submission of this document. Any re-issuance of title resulting from inaccurate data may be subject to a \$250.00 processing fee.

Title Assigned to:	Name	_____
<small>(Name and information for purchaser of the unit)</small>	Address	_____ _____ _____
	Contact	_____
	Phone #	_____
	Email Address	_____

County: _____
Fed ID# _____

Title Mailed to:	Name	_____
<small>(Must be Physical Address)</small>	Address	_____ _____ _____
<small>(Company or business that will be registering the unit)</small>	Contact	_____
	Phone #	_____
	Email Address	_____

Lienholder:	Name	_____
<small>(If no lienholder exists, 'Not Applicable' must be notated in Name field)</small>	Address	_____ _____ _____
	Contact	_____
	Phone #	_____
	Email Address	_____

Customer Signature:



JACK DOHENY COMPANY - ANTIOCH
 1700 VERNE ROBERTS CIRCLE
 Antioch CA 94509

SALES QUOTE

*****UNIT NOT AVAILABLE FOR PURCHASE UNTIL 06/06/2021*****

Sold To:
 MISCELLANEOUS SALES
 City of Discovery Bay, CA
 Discovery Bay CA 94505

Ship To:
 City of Discovery Bay
 Discovery Bay CA 94505

INFORMATION

Quote Number:	848	Customer Code:	MISC0001
Revision No:	1	Site Code:	
Date:	2/9/2021	Contact:	
Sales Rep:	STEPHANIE PRESCOTT	Contact Phone:	
Sales Rep Phone :	760-644-5147	Equipment Location:	ANTIOCH
Sales Rep Email :	StephaniePrescott@dohenycompany.com	Miles:	7641
		Engine Hours:	607
		Terms:	RENTAL AS IS/NO WARRANTY

DETAILS

Equipment#	Year	Make	Model	Unit Price	Qty	Sales Value
15933	2019	VACTOR	2100I	\$395,000.00	1	\$395,000.00

*****SUBJECT TO AVAILABILITY OF UNIT*****

Total: \$395,000.00

Signature: _____

Name: _____

Date: _____

Sale of Equipment Terms and Conditions are attached.
 Sales Value may not include transport or any applicable sales taxes.
 Buyer is responsible for and agrees to pay all applicable sales taxes and transport.



925-777-0944
 info@dohenycompany.com
 dohenycompany.com

SALE OF USED EQUIPMENT TERMS AND CONDITIONS

1. **THE AGREEMENT.** Jack Doheny Companies, Inc., (the "Seller") agrees to sell, transfer and convey its right, title and interest in the used goods, equipment, vehicles and other used items (collectively, the "Equipment") described in Seller's written Proposal for the Sale of Used Equipment (the "Proposal") to the Buyer subject to the terms and conditions contained herein, which are incorporated into the Proposal, agreed to by the parties hereto, and consists of the entire agreement between the Seller and Buyer (collectively, the "Agreement"). The Agreement shall be for the benefit of the Seller and Buyer and not for the benefit of any other person or entity. Prior courses of dealing, trade usage and verbal agreements not reduced to a writing signed by the Seller and Buyer, to the extent they differ from, modify, add to or change from the Agreement shall not be binding on the Seller.
2. **TERMS OF PAYMENT.**
 - 2.1 **Payment Date.** All payments for the Equipment are due from Buyer on the date of the invoice unless other terms are agreed to in writing between the Seller and Buyer. Payment shall be made to Seller at the address specified in the Agreement, without any offset or deduction for any reason.
 - 2.2 **Shipping Delays.** If any shipment is delayed at the request of Buyer, payment shall become due based on the date Seller is prepared to make shipment, and Seller may invoice Buyer based on such date. All prices for Equipment are F.O.B. Seller's shipping point.
 - 2.3 **Delinquent Payments.**
 - 2.3.1 Any payment not made by Buyer on or before its due date shall be subject to a late charge on any unpaid balance at a rate of 18% per annum, or the highest interest rate allowed by law, whichever is greater.
 - 2.3.2 If a payment is not made on or before its due date, Buyer agrees that Seller may elect, in addition to any other remedy at law or in equity, to cease performance under the Agreement and any other agreement between Buyer and Seller until such payment is rendered to Seller .
3. **DELIVERY.** Seller does not guarantee delivery dates.
4. **RISK OF LOSS.** Buyer assumes all risk of loss of Equipment upon delivery by Seller to carrier if Equipment is shipped. For Equipment that is shipped, Seller agrees to: (a) prepare the Equipment for shipment to Buyer; (b) deliver custody of the Equipment to carrier; (c) make appropriate arrangements for the transportation to carrier; and deliver documents to enable Buyer to obtain possession of the Equipment. Seller shall not be obligated to obtain insurance or to prepay transportation/carrier costs for the Equipment. Buyer agrees to be responsible for and to timely pay all loading, unloading and other charges incidental to transportation of the Equipment. Whether Seller pays transportation charges or not, risk of loss shall pass to Buyer upon delivery of the Equipment to a carrier.
5. **NO WARRANTY/AS IS SALE.** Buyer has inspected the Equipment and is satisfied with the Equipment's condition. THE SALE OF THE EQUIPMENT IS "AS- IS" WITH NO EXPRESS OR IMPLIED WARRANTIES OF ANY KIND, INCLUDING WITHOUT LIMITATION ANY IMPLIED WARRANTY OF MERCHANTABILITY OR FITNESS FOR A PARTICULAR PURPOSE, ALL OF WHICH ARE HEREBY SPECIFICALLY DISCLAIMED. IN NO EVENT SHALL SELLER BE LIABLE FOR INCIDENTAL, CONSEQUENTIAL, SPECIAL OR PUNITIVE DAMAGES, INCLUDING WITHOUT LIMITATIONS, LOSS OF REVENUES, PROFITS OR RECALL EXPENSES.
6. **INDEMNIFICATION.** Buyer shall indemnify, hold harmless and release Seller from any and all liabilities, losses, damages, claims, costs and expenses, including attorney fees, arising out of, in whole or in part, from (a) the design or manufacture of the Equipment, or (b) the use of the Equipment by Buyer and those acting on Buyer's behalf.
7. **MISCELLANEOUS.**
 - 7.1 **No Assignment.** There shall be no assignment of the Agreement by Buyer without the prior written approval of Seller. Any assignment of the Agreement shall not relieve Buyer of its obligations under the Agreement.
 - 7.2 **Force Majeure.** Neither party will be liable for any delay or failure to perform its obligations hereunder, other than a payment obligation, due to any cause beyond its reasonable control including without limitation, acts of God or of the public enemy, including terrorists, acts of the government in its sovereign capacity, fires, floods, epidemic, strikes, picketing or boycotts, or any other circumstances caused by natural occurrences or third party actions beyond the reasonable control and without the fault or negligence of the party whose performance is affected ("Force Majeure Events"); provided that the affected party provides the other party prompt notice of the applicable circumstance and uses commercially reasonable efforts to re-commence performance as promptly as possible; provided, further, that if the duration of such Force Majeure Event exceeds thirty (30) days, the other party may terminate the Agreement upon delivery of written notice to the affected party.
 - 7.3 **Venue.** The parties agree that any dispute under the Agreement shall be brought in the applicable state or federal court located in the county in which the Originating Office is located and the parties waive any right to a jury trial.
 - 7.4 **Construction and Captions.** The parties acknowledge that each has reviewed the Agreement and that the normal rules of construction to the effect that any ambiguities are to be resolved against the drafting party shall not be employed in the interpretation of the Agreement or any exhibits or amendments hereto ; and that section headings appearing in the Agreement are for convenience of reference only and they are not intended, to any extent or for any purpose, to limit or define the text of any section or any subsection hereof. In the event any part of the Agreement is found to be ambiguous, such ambiguity shall not be construed against any party.
 - 7.5 **Entire Agreement.** The Agreement constitutes the sole and entire agreement between the parties and supersedes all prior and contemporaneous statements , promises, understandings or agreements, whether written or oral.
 - 7.6 **Amendments.** The Agreement may be amended, modified or altered at any time upon the approval of the Seller and Buyer; however, any such amendment must be in writing and signed by the Seller and Buyer in order for such amendment to be of any force and effect.
 - 7.7 **Partial Invalidity.** In the event that any provision of the Agreement is declared by any court of competent jurisdiction or any administrative judge to be void or otherwise invalid, all of the other terms, conditions and provisions of the Agreement shall remain in full force and effect to the same extent as if that part declared void or invalid had never been incorporated in the Agreement and in such form, the remainder of the Agreement shall continue to be binding upon the parties.
 - 7.8 **Counterparts.** The Agreement and any amendment thereto may be signed and executed in one or more counterparts, each of which shall be deemed an original and all of which together shall constitute one Agreement. Delivery of an executed counterpart of a signature page of the Agreement by facsimile or email shall be effective as delivery of an originally executed counterpart of the Agreement.
 - 7.9 **Authority.** Each person(s) executing the Agreement as an agent or in a representative capacity warrants that he or she is duly authorized to do so .



VACTOR 2115 Combination Sewer Cleaner
EQ #:15933

PRODUCT DESCRIPTION

- 2019 Vactor 2100i with Roots 824-18" Hg. Blower, 15 Yard Debris body, 1500 Gallons of Fresh Water

STANDARD FEATURES

- 48" x 22" x 24" Curb Side Aluminum Toolbox
- Aluminum Fenders
- Mud Flaps
- Electric/Hydraulic Four Way Boom
- Color Coded Sealed Electrical System
- Remote Pendant Control w/35' Cord
- Intuitouch Electronic Package
- Double Acting Dump Hoist Cylinder
- Handgun Assembly w/35' x 1/2" Hose w/Quick Disconnects
- 3" Y-Strainer at Water Pump Inlet
- Ex-Ten Steel Cylindrical Debris Tank
- Flexible Hose Guide
- Nozzle Storage Rack
- Vacuum Tube Storage: Curbside (2) Pipe, Rear Door (2) Pipe
- (5) 1" Nozzles
- 25' Leader Hose
- Flat Rear Door w/Hydraulic Locks and Door Power-up/Down, Open/Close Feature
- Dual 10" Stainless Steel Float Shut Off System/Rear Mounted
- Debris Body Vacuum Relief System
- Debris Deflector Plate
- 60" Dump Height
- Water Sight Gauge DS/PS
- Liquid Float Level Indicator
- Boom Transport Post Storage
- 2000 PSI Water Pressure
- 3" Y-Strainer @ Water Pump w/3" Drain Valve
- Performance Package: (Hyd Variable Flow, Dual PTO's. Dual Hyd. Pumps)
- 1" Water Relief Valve for Vactor Water Pump
- Stainless Steel Microstrainer
- Blower Air Shift Controls
- Hydraulic Cooling Package
- Midship Handgun Coupling
- Side Mounted Water Pump
- Hose Wind Guide (Dual Roller)
- Hose Footage Counter - Electronic
- Hose Reel Manual Hyd. Extend/Retract
- Hose Reel Chain Cover (Full)
- Tachometer/Chassis Engine W/Hourmeter
- Circuit Breakers

- LED Lights, Clearance, Back-Up, Stop, Tail & Turn
- Tow Hooks, Front and Rear
- Electronic Back-Up Alarm
- Hydraulic Tank Shutoff Valves
- 8" Vacuum Pipe Package
- Emergency Flare Kit
- Fire Extinguisher 5 Lbs.
- Low Water Alarm with Water Pump Flow Indicator
- Front Joystick Boom Control
- Digital Hose Footage Counter
- Water Pump Hour Meter
- PTO Hour Meter
- Camera System, Rear Only
- Digital Water Pressure Gauge

ADDITIONAL FEATURES

- Roots 824-18" Hg. Blower
- 180 Degree Rotation, 10 Ft. Hydraulic Telescoping Boom, Front Loading 8" Suction Hose
- 100 GPM Variable Flow Water System
- 1" x 600' Piranha Sewer Hose, 2500 PSI
- Hydraulic Extending/Rotating 15" Hose Reel (1" x 800') Capacity
- Debris Body Flush Out System
- 6" Knife Valve w/Cam-Loc, Rear Door, 3:00 Position
- Pump Off Ports and Programming
- Internal Body Screen with Pump Off Ports Only
- Centrifugal Separators
- Folding Pipe Rack, Curbside
- Folding Pipe Rack, Streetside
- Rear Door Splash Shield
- Lube Manifold
- Plastic Lube Chart
- Air Purge
- Hot Shift Blower Drive
- Wireless Controls, including hose reel controls
- Cold Weather Recirculator, PTO Driven, 25 GPM
- Rodder System Accumulator- Jack Hammer on/off control w/ manual valve
- Handgun Couplers, Front and Rear
- Hydro Excavation Kit/Retract Reel w/1/2" X 50' Hose and Nozzle
 - 50' x 1/2" Hose Reel Spring Loaded - Mounted Curbside Midship
 - 50' x 1/2" 2500 PSI Hose with 10,000 PSI Burst Pressure
 - Nozzle Package to Include:
 - Rotating / Spinner Nozzle (Turbo Nozzle)
 - 2 Tip Low Flow Nozzle
 - 3 Tip High Flow Nozzle
 - Adjustable through multi-flow - from 2-23 gpm
- Cyclone Washout System
- Rodder Hose Pinch Roller
- Hydraulic Oil Temp Alarm
- Rear Directional Control, Signal Master LED Arrow Stick, 8 Lights
- Waterproof, Rechargeable, Wireless, Handheld, LED Spot Light w/12V Charger and Plug
- Strobe/Revolving Light, Rear
- LED Mid-Ship Turn Signals
- Worklights (2), LED, Telescoping Boom
- Toolbox, Front Bumper Mounted, 16 x 12 x 18 w/(2) LED Side Markers
- Toolbox, Behind Cab
- Toolbox, Driver Side Chassis Frame, 24w x 24h x 24d
- Toolbox, Driver Side Subframe, 18w x 24h x 24d
- Safety Cone Storage Rack - Post Style
- Digital Water Level Indicator
- Debris Body Level Indicator
- Blower High Temperature Safety Shutdown

SPECIALTY SYSTEM OPTIONS

- Rodder Pump Drain Valve System

PAIN

- Module Paint, Dupont Imron Elite - Sanded Primer Base
- Module Paint Color: White
- Cab Paint Color: White

CHASSIS

- 2019 Kenworth T880 6x4 Tandem Axle Chassis, Cummins ISX-425, 425HP Engine and Allison 4000 RDS Automatic Transmission



VACTOR 2100i Combination Sewer Cleaner

EQ #:15995 Specs

PRODUCT DESCRIPTION

- 2018 Vactor 2100i with Roots 824-18" Hg. Blower, 15 Yard Debris body, 1500 Gallons of Fresh Water

STANDARD FEATURES

- 48" x 22" x 24" Curb Side Aluminum Toolbox
- Aluminum Fenders
- Mud Flaps
- Electric/Hydraulic Four Way Boom
- Color Coded Sealed Electrical System
- Remote Pendant Control w/35' Cord
- Intuitouch Electronic Package
- Double Acting Dump Hoist Cylinder
- Handgun Assembly w/35' x 1/2" Hose w/Quick Disconnects
- 3" Y-Strainer at Water Pump Inlet
- Ex-Ten Steel Cylindrical Debris Tank
- Flexible Hose Guide
- 30 Deg. Sand Nozzle w/Carbide Inserts
- 30 Deg. Sanitary Nozzle w/Carbide Inserts
- 15 Deg. Penetrator Nozzle w/Carbide Inserts
- Nozzle Storage Rack
- Vacuum Tube Storage: Curbside (2) Pipe, Rear Door (2) Pipe
- 1" Nozzle
- 10' Leader Hose
- Flat Rear Door w/Hydraulic Locks and Door Power-up/Down, Open/Close Feature
- Dual 10" Stainless Steel Float Shut Off System/Rear Mounted
- Debris Body Vacuum Relief System
- Debris Deflector Plate
- 60" Dump Height
- Water Sight Gauge DS/PS
- Liquid Float Level Indicator
- Boom Transport Post Storage
- 2000 PSI Water Pressure
- 3" Y-Strainer @ Water Pump w/3" Drain Valve
- Performance Package: (Hyd Variable Flow, Dual PTO's. Dual Hyd. Pumps)
- 1" Water Relief Valve for Vactor Water Pump
- Stainless Steel Microstrainer
- Blower Air Shift Controls
- Hydraulic Cooling Package
- Midship Handgun Coupling
- Side Mounted Water Pump
- Hose Wind Guide (Dual Roller)
- Hose Footage Counter - Mechanical
- Hose Reel Manual Hyd. Extend/Retract
- Hose Reel Chain Cover (Full)
- Tachometer/Chassis Engine W/Hourmeter
- Circuit Breakers

- LED Lights, Clearance, Back-Up, Stop, Tail & Turn
- Tow Hooks, Front and Rear
- Electronic Back-Up Alarm
- Hydraulic Tank Shutoff Valves
- 7" Vacuum Pipe Package
- Emergency Flare Kit
- Fire Extinguisher 5 Lbs.
- Low Water Alarm with Water Pump Flow Indicator
- Front Joystick Boom Control
- Digital Hose Footage Counter
- Water Pump Hour Meter
- PTO Hour Meter
- Camera System, Rear Only
- Digital Water Pressure Gauge

ADDITIONAL FEATURES

- Roots 824-18" Hg. Blower
- 180 Degree 10' x 15' Rapid Deployment Boom
- 100 GPM Variable Flow Water System
- 1" x 600' Piranha Sewer Hose, 2500 PSI
- Hydraulic Extending/Rotating 15" Hose Reel (1" x 800') Capacity
- Debris Body Flush Out System
- 6" Knife Valve w/Cam-Loc, Rear Door, 3:00 Position
- Pump Off Ports and Programming
- Internal Body Screen with Pump Off Ports Only
- Centrifugal Separators
- Folding Pipe Rack, Curbside
- Folding Pipe Rack, Streetside
- Rear Door Splash Shield
- Lube Manifold
- Plastic Lube Chart
- Air Purge
- Hot Shift Blower Drive
- Wireless Controls, including hose reel controls
- Rotatable Boom Inlet Hose, 10 x 15 RDB
- Cold Weather Recirculator, PTO Driven, 25 GPM
- Rodder System Accumulator- Jack Hammer on/off control w/ manual valve
- Handgun Couplers, Front and Rear
- Cyclone Washout System
- Rodder Hose Pinch Roller
- Handgun Hose Reel w/Spring Retract
- Rodder Pump Drain Valves
- Hydraulic Oil Temp Alarm
- Rear Directional Control, Signal Master LED Arrow Stick, 8 Lights
- Waterproof, Rechargeable, Wireless, Handheld, LED Spot Light w/12V Charger and Plug
- Strobe/Revolving Light, Rear
- LED Mid-Ship Turn Signals
- Worklights (2), LED, 10 x 15 RDB
- Toolbox, Front Bumper Mounted, 16 x 12 x 18 w/(2) LED Side Markers
- Toolbox, Behind Cab
- Toolbox, Driver Side Chassis Frame, 24w x 24h x 24d
- Toolbox, Driver Side Subframe, 18w x 24h x 24d
- Safety Cone Storage Rack - Post Style
- Digital Water Level Indicator
- Debris Body Level Indicator
- Blower High Temperature Safety Shutdown

PAINT

- Module Paint, Dupont Imron Elite - Sanded Primer Base
- Module Paint Color: White
- Cab Paint Color: White

CHASSIS

- 2019 Peterbilt 567 SBA Tandem Axle Chassis, 425 HP and Automatic Transmission

PLEASE DOWNLOAD NEWEST VERSION



PREPARED BY

WECO Industries

LEIGHTON WHITE - leightonwhite@wecoind.com

PREPARED FOR

AARON GOLDSWORTHY

TOWN OF DISCOVERY BAY
1800 WILLOW LAKE ROAD
DISCOVERY BAY, CA 94505

QUOTE

GapVax



QUOTE ID
21xxx

UPDATED:
3/22/2021

PROPOSAL NO.	21xxx
DISTRIBUTOR	WECO Industries
MODEL	MC1510
CHASSIS	FREIGHTLINER 114SD 6 X 4 - 470 HP - 66,000
CHASSIS YEAR	2022
SOURCEWELL PRICING	No
CONTACT	AARON GOLDSWORTHY
END USER	TOWN OF DISCOVERY BAY
ADDRESS	1800 WILLOW LAKE ROAD
CITY, STATE, ZIP	DISCOVERY BAY, CA 94505
PHONE NUMBER	925-775-5350
EMAIL	agoldsworthy@toddb.ca.gov
SALES REPRESENTATIVE	LEIGHTON WHITE
SALES REP. EMAIL	leightonwhite@wecoind.com
HGAC COMPATIBLE	
Chassis	TRUE
Model	TRUE



2022 MC1510-3S3X COMBINATION JET/VAC

QUOTE ID: 21xxx

June 16, 2021

NOTE: THE GAPVAX MC UNIT MAY EXCEED FEDERAL BRIDGE ALLOWABLE WEIGHTS WHEN LOADED WITH WATER, OR DEBRIS, AND/OR BOTH WATER AND DEBRIS COMBINED. PLEASE CONSULT FACTORY.

	OPTION DESCRIPTION	NOTES	QTY	PRICE			
CHASSIS OPTIONS							
CHA001	FREIGHTLINER 114SD 6 X 4 - 470 HP - 66,000 LB. GVWR - AUTO	MODEL YEAR 2022	1	\$128,000			
	DETROIT DD13 RATED FOR 470 HP	CONSULT FACTORY		\$0			
	ALLISON 6 SPEED AUTOMATIC	PRICES MAY VARY		\$0			
	22,000 LB FRONT AXLE			\$0			
	46,000 LB REAR AXLE			\$0			
	WHITE CAB COLOR		1	\$0			
DEBRIS BODY OPTIONS							
STD	10 USABLE YARD DEBRIS TANK MADE OF 3/16" ASTM A-572 GRADE 50 EXTEN STEEL		STANDARD	STANDARD			
STD	FULL-OPENING REAR TAILGATE		STANDARD	STANDARD			
STD	STAINLESS STEEL TAILGATE SEALING ROD		STANDARD	STANDARD			
STD	FOUR HYDRAULIC REAR DOOR LOCKS		STANDARD	STANDARD			
STD	DUAL TAILGATE LIFT CYLINDERS		STANDARD	STANDARD			
STD	FRONT MOUNTED HOIST CYLINDER, POWER UP AND DOWN, 55,000 LB CAPACITY		STANDARD	STANDARD			
STD	THREE TIE-OFF ANCHORS ON TOP OF BODY		STANDARD	STANDARD			
STD	FIVE YEAR WARRANTY ON DEBRIS TANK AGAINST RUST THROUGH, DISTORTION AND CRACKS		STANDARD	STANDARD			
STD	THREE TIE-OFF ANCHORS ON TOP OF THE BODY 6' APART		STANDARD	STANDARD			
A1B	STAINLESS DEBRIS BODY FLUSH OUT SYSTEM		1	\$2,775			
A2A	DRAIN AT BOTTOM OF TAILGATE - 6" BRASS LEVER VALVE WITH 15' OF LAYFLAT HOSE	VALVE IS NOT 100% LEAK PROOF	1	\$860			
A3-CS	FLOAT TYPE LIQUID LEVEL INDICATOR ON SIDE OF DEBRIS TANK		1	\$1,080			
A11A	FILTER SCREEN FOR DRAIN VALVE (SHORT BOX)	REQUIRES A2	1	\$670			
A21	CURBSIDE LADDER TO PORT INSPECTION AREA		1	\$2,040			
A21B	ADD FOLDING LADDER EXTENSION	REQUIRES A21	1	\$1,005			
A18	PURGE VALVE AT GRAVITY DRAIN (1-1/4" BALL VALVE)		1	\$395			
A19	5" GLASS SIGHT EYES - 2 EA		1	\$635			
A22A	GALVANIZED BOLT ON TAILGATE SPLASH SHIELDS		1	\$1,970			
WATER TANK OPTIONS							
STD	1500 GALLON WATER TANK MADE OF 3/16" 304 STAINLESS STEEL		STANDARD	0			
STD	4" HIGH ANTI-SIPHON RING WITH (4) 2-1/2" HOLES		STANDARD	0			
STD	WATER TANK LEVEL SIGHT TUBE ON CURBSIDE		STANDARD	0			
STD	DRAIN VALVE AT BOTTOM OF WATER TANK		STANDARD	0			
STD	3" FILL LINE WITH 2-1/2" FIRE HOSE CONNECTION CURBSIDE		STANDARD	0			
STD	3" WATER STRAINER WITH STAINLESS STEEL SCREEN ON WATER TANK FILL LINE		STANDARD	0			
STD	3" SUPPLY LINE TO WATER PUMP MOUNTED AT REAR HINGE PIN		STANDARD	0			
STD	FIVE YEAR WARRANTY ON WATER TANK AGAINST RUST THROUGH, DISTORTION AND CRACKS		STANDARD	0			
B23B	STAINLESS BAFFLES IN THE WATER TANK		1	\$1,765			
B30	UPGRADE TO BUTTERFLY VALVE IN 3" SUPPLY LINE		STANDARD	\$0			
VACUUM SYSTEM OPTIONS							
STD	DUAL STAINLESS STEEL SHUTOFF FLOAT BALLS		STANDARD	0			
STD	NOISE & VIBRATION DAMPENING MOUNTS		STANDARD	0			
STD	STAINLESS STEEL VEE-WIRE SAFETY SCREEN		STANDARD	0			
STD	6" SAFETY VACUUM RELIEF		STANDARD	0			
STD	PANIC SWITCH FUNCTION FOR VACUUM		STANDARD	0			
C8	UPGRADE TO ROOTS TYPE VACUUM PUMP 4,500 CFM AND 18" HG		1	\$12,560			
C19	UPGRADE TO XL TRANSFER CASE	9-LITER ENGINE = UP TO 5300 CFM, REQUIRES OPTION C8	1	\$890			
WATER SYSTEM OPTIONS							
STD	TRI-PLEX WATER PUMP SYSTEM		STANDARD	STANDARD			
STD	800 PSI WASHDOWN CIRCUIT WITH 50' X 1/2" HOSE		STANDARD	STANDARD			
STD	AIR PURGE SYSTEM FOR PRIMARY CIRCUIT		STANDARD	STANDARD			
STD	LOW POINT DRAIN VALVES ON WATER LINES		STANDARD	STANDARD			
STD	SET WASHDOWN CIRCUIT TO FULL WORKING PRESSURE	OPTION D4 IS RECOMMENDED	1	\$0			
D3A	GIANT GP8000 SERIES WATER PUMP RATED 80 GPM @ 2,500 PSI		1	\$4,140			
D4	UPGRADE TO URACA MULTIFLOW VALVE - SET WASHDOWN CIRCUIT TO FULL PRESSURE FOR HANDGUN APPLICATIONS		1	\$2,140			
D7A	50' X 1/2" HAND GUN REEL FOR WASHDOWN CIRCUIT		1	\$1,260			

D35B	1/2" HX LANCE WITH 6' EXTENSION AND RIPS AW NOZZLE		1	\$940			
BOOM OPTIONS							
STD	8' FRONT MOUNTED TELESCOPING BOOM WITH 26' REACH AND 180 DEG. ROTATION		STANDARD	0			
STD	180 DEGREE POWER ROTATION VIA WORM DRIVE		STANDARD	0			
STD	DUAL 4" LIFT CYLINDERS		STANDARD	0			
STD	CAB PROTECTION RACK		STANDARD	0			
E6	REMOTE LUBE FOR BOOM LIFT AND ROTATION		1	\$3,070			
E7	3/16" HEAVY DUTY BOOM ELBOW WITH 6" FORMED CHANNEL RADIUS		1	\$1,175			
HOSE REEL OPTIONS							
STD	FRONT FRAME MOUNTED HOSE REEL WITH 180 DEGREE ARTICULATION		STANDARD	0			
STD	HOSE REEL RATED FOR 800' OF HOSE AND 3,000 PSI		STANDARD	0			
STD	EXTERIOR HOSE EXPANSION RIBS		STANDARD	0			
F1C	DIGITAL FOOTAGE COUNTER - SHAFT-MOUNTED		1	\$2,595			
F11	AUTOMATIC HOSE LEVEL WINDER (INCLUDES "J-HOOK" STLYE HOSE GUIDE)		1	\$8,010			
F16A	DOUBLE ROLLER UPGRADE ON AUTO LEVEL WIND		1	\$760			
CONTROLS, GUAGES, ACCESSORIES OPTIONS							
STD	CAB-MOUNTED AIR SHIFT CONTROLS FOR BLOWER, HYDRAULICS, AND WATER PUMP		STANDARD	0			
STD	CONTROL PANEL MOUNTED AT FRONT HOSE REEL		STANDARD	STANDARD			
STD	OPERATOR CONTROL PANEL INCLUDES GUAGES FOR ENGINE, HYDRAULICS, VACUUM, AND WATER PUMP		STANDARD	0			
STD	PANIC SWITCH TO RELIEVE WATER PRESSURE AND VACUUM		STANDARD	0			
STD	30' PENDANT REMOTE WITH BOOM FUNCTIONS		STANDARD	0			
G2B	G2B CONTROL SYSTEM WITH DM430 DISPLAY INCLUDES:		1	\$5,840			
	LOW WATER SHUTDOWN PROTECTION		1	\$0			
	HIGH WATER TEMPERATURE SHUTDOWN PROTECTION		1	\$0			
	ENGINE OVERSPEED PROTECTION		1	\$0			
	ON-SCREEN DIAGNOSTICS FOR WATER, PTO AND ENGINE LEVELS		1	\$0			
G4A	HIGH DEBRIS LEVEL LIGHT & ALARM WIRED TO VACUUM RELIEF	REQUIRES A3	1	\$1,280			
	OMNEX T110 WIRELESS REMOTE		STANDARD	0			
G19	WIRELESS REMOTE WITH BOOM AND VACUUM FUNCTIONS		1	\$3,805			
LIGHTING							
STD	TRUCK-LITE LED RUNNING (MARKER) LIGHTS		STANDARD	0			
STD	LED STOP/TAIL/TURN LIGHT WITH POLISHED STAINLESS STEEL BOXES		STANDARD	0			
H1D	TWO (2) LED STROBE BEACON LIGHT - FRONT (CALIFORNIA TITLE-13 COMPLIANT)	(CODE 3 MN: LSS222A OR EQUAL) (PN: LHT022539)	1	\$935			
H2D	TWO (2) LED STROBE BEACON LIGHT - REAR (CALIFORNIA TITLE-13 COMPLIANT)	(CODE 3 MN: LSS222A OR EQUAL) (PN: LHT022539)	1	\$935			
H5B	(2) BOOM WORK LIGHTS - HELLA LED WORK LIGHTS (PN: LHT022429)		1	\$945			
H6B	(2) REAR WORK LIGHTS - HELLA LED WORK LIGHTS (PN: LHT022429)		1	\$775			
H7BC	(4) SIDE WORK LIGHTS - HELLA LED WORK LIGHTS (PN: LHT022429) (2 PER SIDE)		1	\$1,155			
H33	REAR ARROW LIGHT - LOW PROFILE LED (CA TITLE-13 COMPLIANT) TRAFFIC ADVISOR	(LHT022544, CODE 3 TORUS NARROWSTIK OR EQUAL)	1	\$2,100			
H39B	TWO HIGH INTENSITY LED WORK LIGHTS (HELLA PB1500) ON FRONT HOSE REEL TO SHINE INTO MANHOLE		1	\$1,110			
STORAGE OPTIONS							
STD	25' FIRE HOSE BASKET		STANDARD	0			
STD	TWO (2) GALVANIZED STEEL TUBE TRAYS		STANDARD	0			
I6F-DS	STAINLESS STEEL, 36" WIDE X 24" TALL X 24" DEEP, MOUNTED ON THE DRIVER'S SIDE		1	\$890			
I9C	48" TOOL BOX - STAINLESS STEEL, 48" WIDE X 24" HIGH X 24" DEEP, MOUNTED ON THE CURBSIDE		1	\$2,405			
I14	TRAFFIC CONE HOLDER ON DRIVER'S SIDE		1	\$205			
I14C	TRAFFIC CONE HOLDER ON CURBSIDE		1	\$205			
I16A	WHEEL CHOCK HOLDER (PER SIDE) - DRIVER'S SIDE		1	\$275			
I16B	WHEEL CHOCK HOLDER (PER SIDE) - CURBSIDE		1	\$275			
I17A	NOZZLE RACK - SIX (6) NOZZLES, 1"		1	\$205			
I20A	REAR DRAIN HOSE RACK FOR 6" LAYFLAT HOSE X 15' LONG		1	\$205			
I26C	TWO BUMPER TOOL BOXES - STAINLESS STEEL, 16" HIGH X 12" WIDE X 18" DEEP WITH FOLD DOWN DOOR		1	\$2,565			
CHASSIS OPTIONS							
STD	DOT LIGHTING / FENDERS / MUD FLAPS / TAILGATE SAFETY PROP, ICC LIGHTS		STANDARD	0			
STD	REMOTE ACTUATED BODY SAFETY PROP		STANDARD	0			
STD	70 GALLONS AW-46 HYDRAULIC OIL, LEVEL/TEMPERATURE GAUGE, SHUTOFF ON SUCTION		STANDARD	0			
STD	REAR BUMPER, TRIANGLE KIT, FIRE EXTINGUISHER, BACKUP ALARM		STANDARD	0			
STD	ALLISON 10-BOLT PTO UPGRADE		STANDARD	0			
J0B	FRONT BUMPER - CALIFORNIA FRONT BUMPER		1	\$1,280			
J3	TOW HOOKS FRONT		1	\$395			
J4B	TOW HOOKS REAR - FRAME MOUNTED		1	\$395			
J18	REMOTE LUBE OF TAILGATE LIFT COMPONENTS AND TAILGATE LOCKS		1	\$3,265			
J21	LICENSE PLATE HOLDER ON BACK OF TUBE TRAY	REQUIRED FOR CALIFORNIA	1	\$330			
J22	STAINLESS STEEL DUMP APRON / PAN ON REAR BUMPER	NOT COMPATIBLE WITH J16	1	\$830			

PAINT OPTIONS						
STD	PAINTED WITH PPG URETHANE PAINT	STANDARD	0			
STD	PAINT BODY WHITE	STANDARD	0			
STD	PAINT FRAME AND PARTS BLACK	STANDARD	0			
STD	PAINT HOSE REEL AND BOOM BLACK	STANDARD	0			
STD	FLEET FINISH	STANDARD	0			
MISCELLANEOUS OPTIONS						
STD	25 FEET OF VACUUM TUBING (5) AND CLAMPS	STANDARD	0			
STD	TIGER TAIL HOSE GUIDE	STANDARD	0			
STD	TWO BLUE STAR SEWER CLEANING NOZZLES	STANDARD	0			
M0	UPGRADE VACUUM TUBING TO FLAT FLANGE	1	\$375			
M3	FILL HOSE 25' X 2 1/2"	1	\$245			
M5A	LEADER HOSE 20' X 1"	1	\$245			
M9C	1" COBRA SEWER HOSE - 2,500 PSI X 800 FT PLASTIC (ORANGE) (PN: HOS022492)	1	\$2,625			
M27	TIGER TAIL (TOTAL OF TWO)	1	\$60			
M29D	FOUR CAMERA - BACK-UP CAMERA SYSTEM WITH 7" COLOR MONITOR (RV-805A), INCLUDES DVR-916 REAR, DVR-921 FRONT, AND TWO (2) DVR-920 SIDE CAMERAS, SIDE	1	\$3,625			
CUSTOM OPTIONS						
**	MANDATORY 5-YEAR CARB EMISSION WARRANTY	1	\$3,000			



PRICING SUMMARY

PRICE OF BASE UNIT WITH OPTIONS:	\$ 445,120.00
DELIVERY: (\$1,000.00 MINIMUM) @ \$3.00 PER MILE	\$ 8,500.00
ESTIMATED SUBTOTAL:	\$ 453,620.00
SALES TAX:	\$ 38,948.00
TOTAL PRICE (PER UNIT):	\$ 492,568.00

ALL PRICES ARE IN US DOLLARS

DUE TO EXTREME MARKET VOLATILITY AND PENDING U.S. GOVERNMENT SECTION 232 TRADE CASES ALL PRICES AND AVAILABILITY ARE SUBJECT TO CHANGE WITHOUT NOTICE, ALL QUOTES TO BE CONFIRMED AT TIME OF ORDER

***** FOB DESTINATION *****

PRINT TERMS	No	
TAX EXEMPT	Yes	Removes FET
INTERNATIONAL	No	Changes Terms
TRADE-IN	No	Replaces Discount
VIEW	B	

SIGNATURE _____

DATE _____



MC
series

OVERVIEW

combination jetvacs

GapVax MC Series Combination JetVac



GapVax, Inc. has been custom-building industrial vacuum and municipal equipment since 1989.

When you choose GapVax, you are choosing top quality equipment.

GapVax is comprised of skilled craftsmen and knowledgeable team members who strive to give the customers the best product available.



The MC Series Combination JetVac is built on a chassis with an extended front frame rail. This extension provides rigid support for the front hose reel, maximizing stability. A full length 6" subframe reinforces the strength of the frame and allows for tube trays. Our units are built to increase the truck's capabilities and last a long time.

Designed by the operator, for the operator. Our units are easy to operate and maintain.

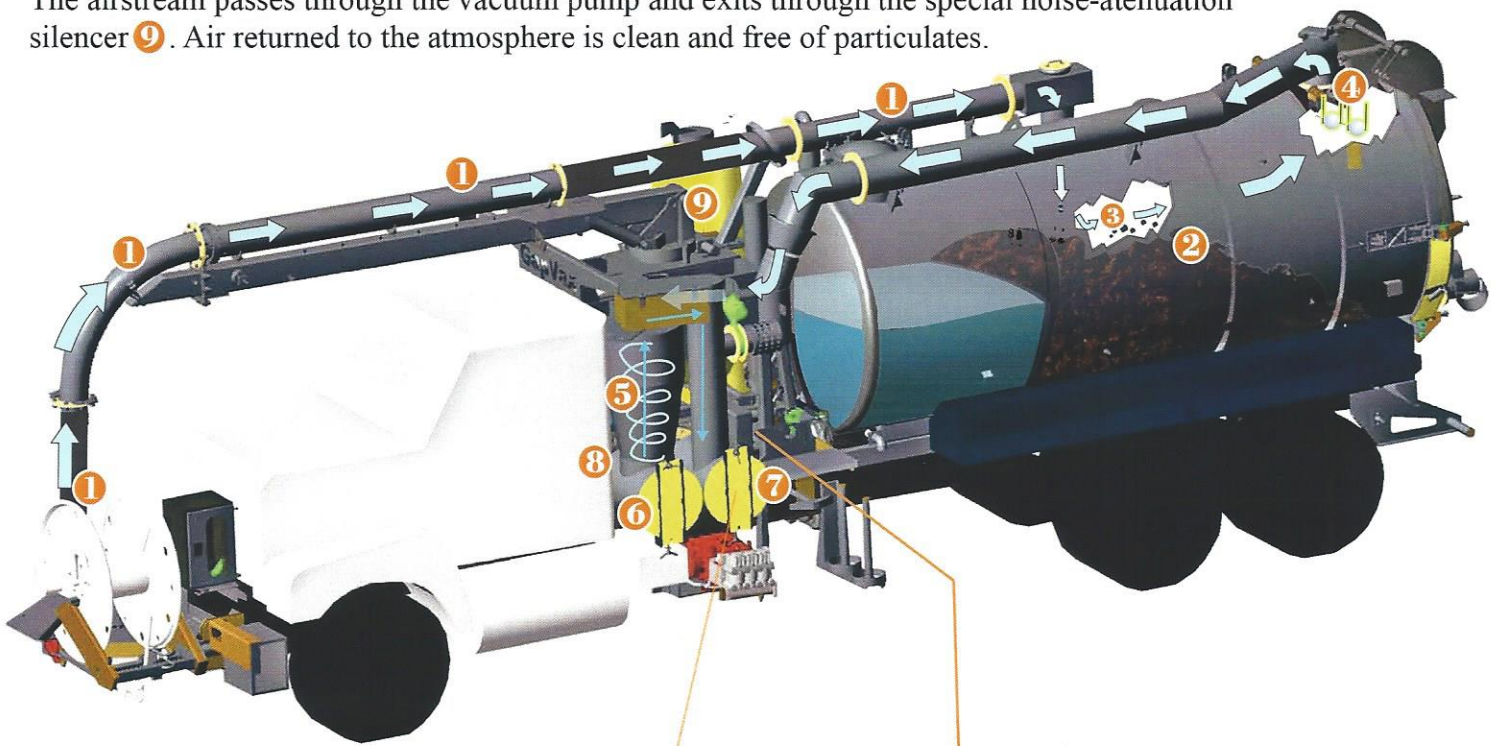
POSITIVE DISPLACEMENT VACUUM SYSTEM OPERATION

In operation, vacuum conveys liquid material, sludge, rocks, gravel, sand, etc. through the vacuum tubes and boom ① into the debris body ②. The material is top-loaded into the front of the debris body where the majority of the debris drops out of the airstream ③ due to gravity and air-flow velocity reduction. A debris body semi-baffle is incorporated to knock down material from the airstream. Dual 10" automatic stainless steel floatballs ④ are built-in to shut off liquids from overfilling the system.

The airstream moves into a specialty engineered cyclone separator ⑤ to centrifugally force mist from the airstream. The material drops out of the cyclone and into the collector box ⑥ located directly below the cyclone.

The airstream exits through the top of the cyclone and passes through a final micro-screen strainer ⑦ which collects any material remaining in the airstream before it enters the vacuum pump ⑧.

The airstream passes through the vacuum pump and exits through the special noise-attenuation silencer ⑨. Air returned to the atmosphere is clean and free of particulates.



Heavy-duty Dual
10" Floatballs



300 Micron Stainless
Steel Safety Screen



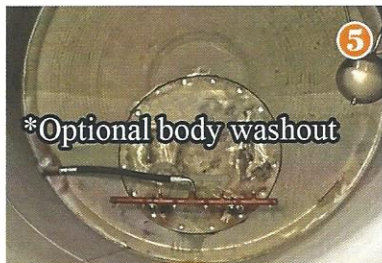
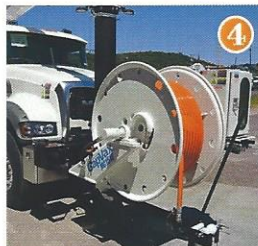
Kunkle Valves (4)
Allow cooling air
into the vacuum pump



*Optional Filter Screen
on decant

TRI-PLEX WATER SYSTEM WITH MULTI-FLOW

Water is stored in the stainless steel water tank **1**. The filtered water enters the water tank via water fill, which is filtered through a 400 micron water filter **2** before entering the water tank. High pressure water from the water pump **3** is directed to the front hose reel **4**, the body washout system **5** or the handgun. Precise control of water pressure and flow is accomplished with the multi-flow valve **6** via the multi-flow control valve located on the front control box panel **7**.



GapVax MC Series Technical Specs



A Body Built to Last

- Unitized, cylindrical water / debris tank with full long sill sub-frame
- 3/16" Non-corroding stainless steel water compartment
- 3/16" High strength exten steel debris compartment
- Two (2) heavy-duty body reinforcement rings
- Full opening rear door
- Liquid tight seal of the rear door is always assured by a non-corroding stainless steel ring
- Four independent, field-adjustable rear door locks
- Adjustable rear door hinges
- Dual lift cylinders to open the rear door
- Material-backed air inlet
- Top-loaded debris compartment for maximum debris capacity
- Material loaded at the front of the debris compartment for better separation
- Debris compartment inlet diffuser significantly reduces material carryover

The Smoothest Drive System:

- Mid-ship transfer case directs the power of the engine to the blower and hydraulic system
- Transfer case rated at 550 continuous horsepower
- Transfer case mount is vibration isolated with four isolators
- Oil level sight glass

Power Vacuum Performance:

- Rotary lobe positive displacement blower
- Minimum air slippage under vacuum
- Direct shaft drive
- Blower mount is vibration isolated with four isolators
- Ultra quiet specifically engineered absorption silencer
- Blower air connections isolated by rubber couplings
- Silencer supports independent of blower
- Oil level sight glass
- Rated at 4,500 CFM and 18" of Vacuum
- Upgradable to 5,000 CFM or 4,000 CFM, 27" Hg
- Operator-friendly vacuum relief valves

Filtration:

- Top-loading body
- Debris compartment inlet diffuser directs material from the airstream
- Dual 10" Floatballs to shut off liquids from overloading
- 10" Low friction pipework
- Specifically engineered centrifugal separator to force the dust and mist from the airstream into a large capacity compartment
- Air passes to final 300 micron stainless steel vee wire screen before entering the blower

GapVax MC Series Technical Specs

GapVax Boom

- Boom support works as one with the chassis
- Heavy-duty dual lift cylinders
- 180° Rotation
- Full 8" Flow capacity
- 3/16" Tube design for minimum friction and very long compartment life
- Field-adjustable seal
- Standard 9' extension, 26' reach from center of the truck

Put It Together:

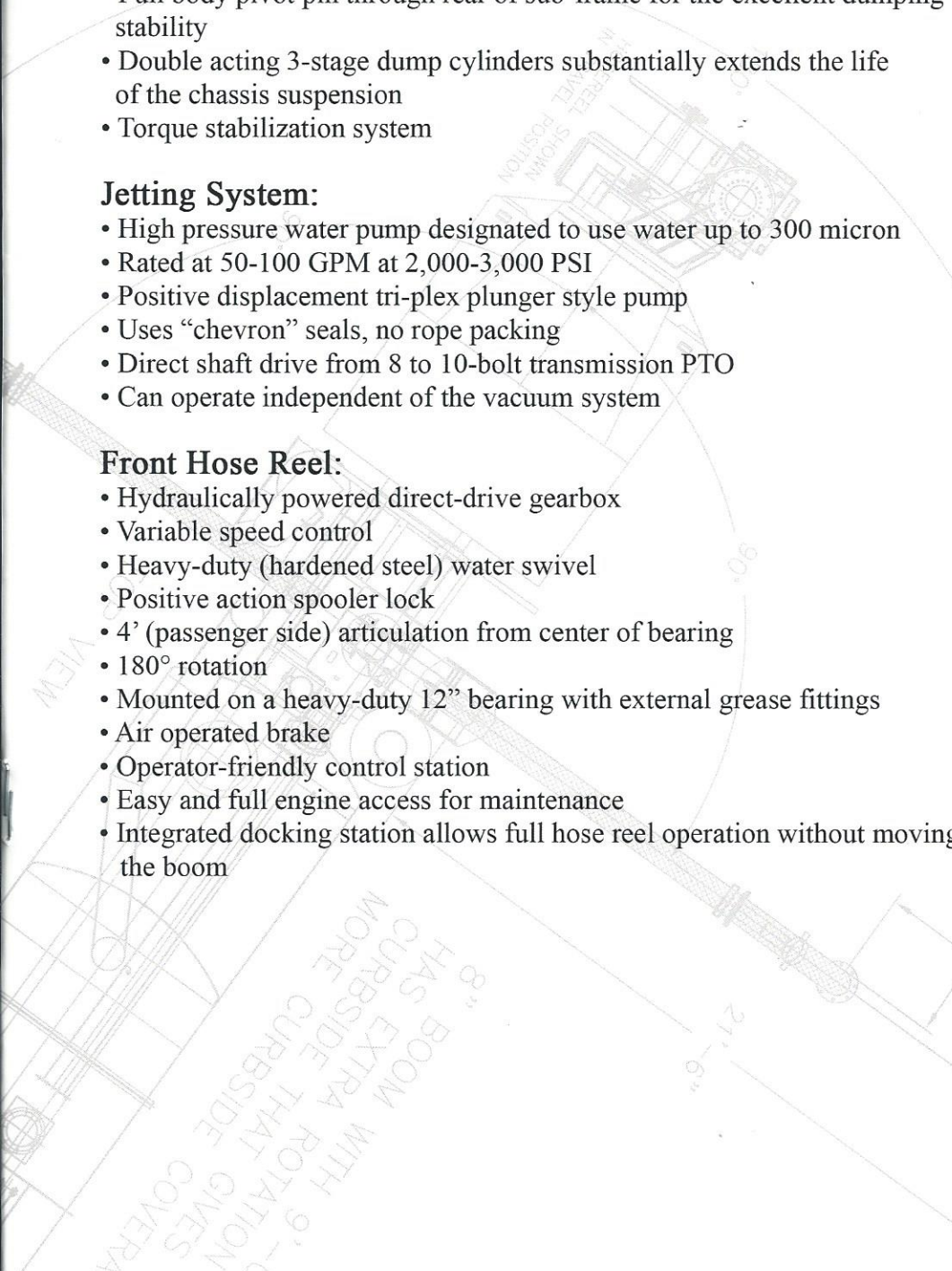
- The heavy-duty sub-frame is bolted to the chassis
- 4" cross I-beams for maximum rigidity
- Full body pivot pin through rear of sub-frame for the excellent dumping stability
- Double acting 3-stage dump cylinders substantially extends the life of the chassis suspension
- Torque stabilization system

Jetting System:

- High pressure water pump designated to use water up to 300 micron
- Rated at 50-100 GPM at 2,000-3,000 PSI
- Positive displacement tri-plex plunger style pump
- Uses "chevron" seals, no rope packing
- Direct shaft drive from 8 to 10-bolt transmission PTO
- Can operate independent of the vacuum system

Front Hose Reel:

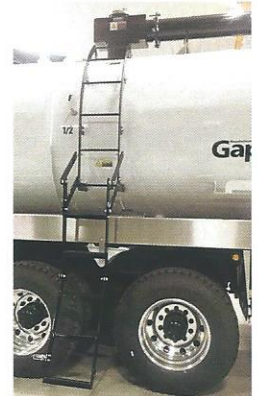
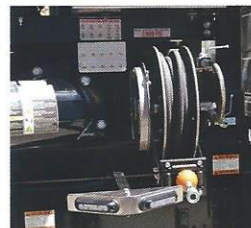
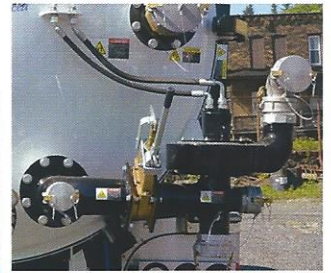
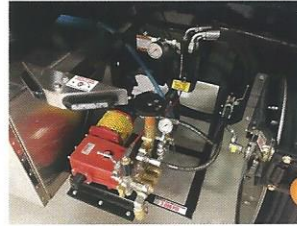
- Hydraulically powered direct-drive gearbox
- Variable speed control
- Heavy-duty (hardened steel) water swivel
- Positive action spooler lock
- 4' (passenger side) articulation from center of bearing
- 180° rotation
- Mounted on a heavy-duty 12" bearing with external grease fittings
- Air operated brake
- Operator-friendly control station
- Easy and full engine access for maintenance
- Integrated docking station allows full hose reel operation without moving the boom



GapVax MC Series OPTIONS

- 6" Decant
- Liquid Level Load Indicator
- Tube Rack
- Auto Level Wind on front hose reel
- Body Washout
- Filter screen on decant
- Wireless remote
- 3" Trash Pump
- 6" Remote operated vacuum break
- Rear ladder (redesigned / curbside)
- Front strobe warning beacon
- Boom worklights
- Hydraulic tool hose reel
- Washdown hose reel
- Hydro Excavation pump
- Hydraulic controls
- Mud flaps

*CNG & Advanced systems available



GapVax CUSTOM BUILDS to fit YOUR needs



MC508

MC1005



MC1007

MC1312



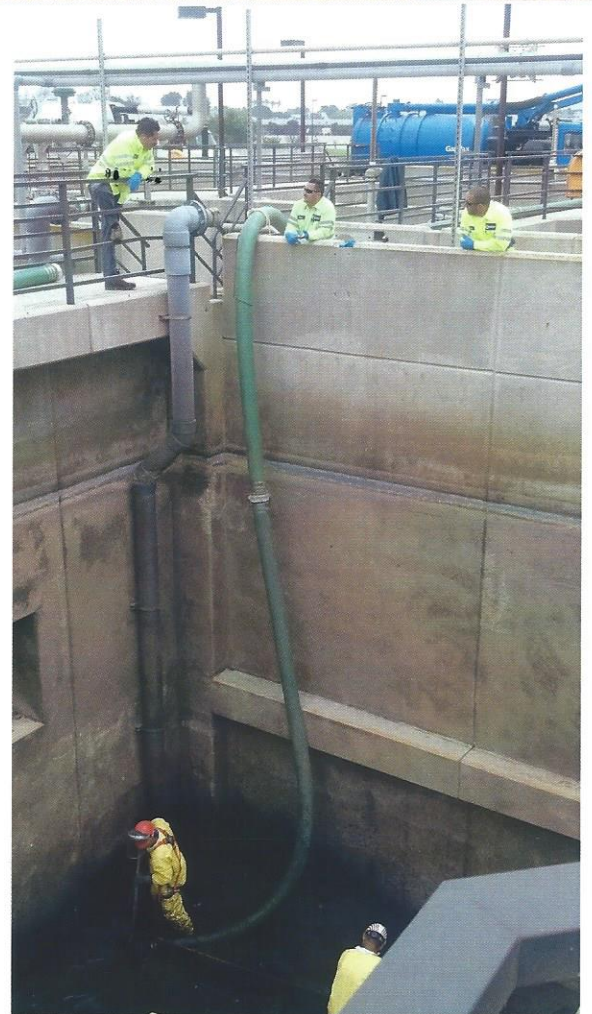
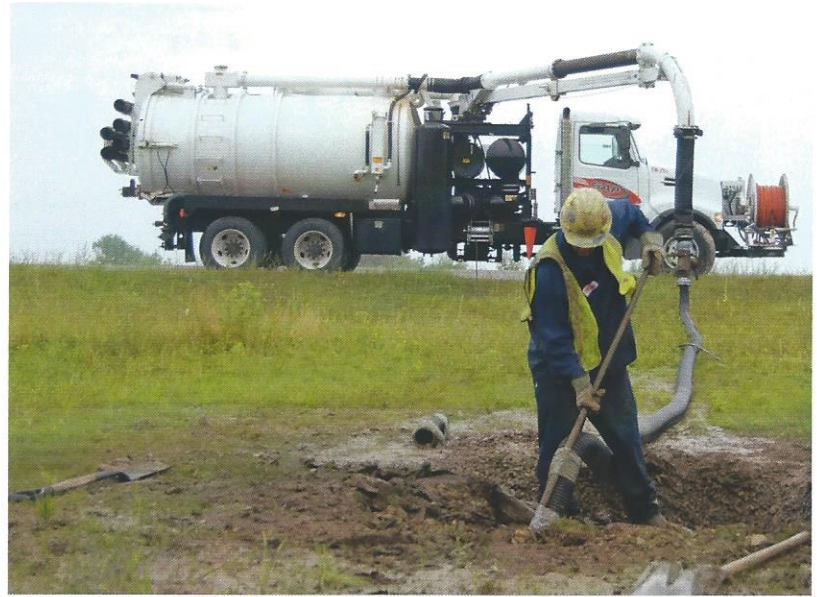
MC1510

MC2008

What Size fits YOUR needs?

*Various sizes available, not limited to models shown

Best Truck in the Business



**CALL
TODAY**

**FOR A
DEMO**

