



MONTHLY OPERATIONS REPORT

Feb 2019

Town of Discovery Bay, CA

3472 Days of Safe Operations

168,955 worked hours since last recordable incident

TRAINING: Safety, Operations, & Equipment

* TRAINING:

- • Safety
 - West Monthly Regional Safety Webinar
 - Fire Extinguisher class room

- Operation
 - None this Month

REPORTS SUBMITTED TO REGULATORY AGENCIES

- * Monthly Discharge Monitoring Report (DMR)**
- * Monthly electronic State Monitoring Report (eSMR)**
- * Monthly Coliform Report, State Water Board (WD)**

WATER SERVICES

Groundwater Well:

- 1B - Active
- 2 – under rehab
- 4 – under rehab
- 5B - Active (Standby only)
- 6 – Active
- 7 - Active

2019 Water Production Table (MG) by Month

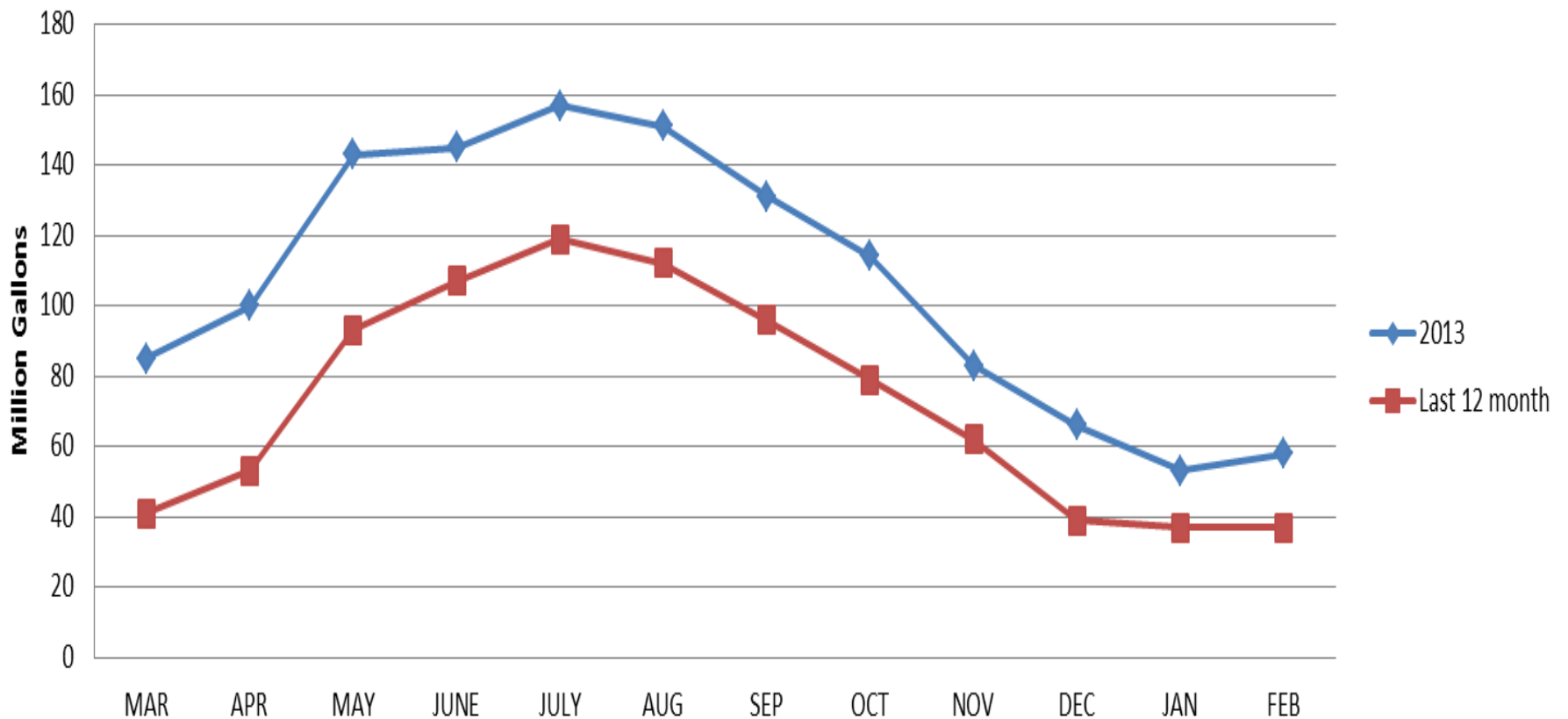
| January | February | March | April | May | June |
|---------|----------|-----------|---------|----------|----------|
| 37 | 37 | | | | |
| July | August | September | October | November | December |
| | | | | | |

Bacteriological Test Results

| Routine Bacteria Samples Collected | No. Total Coliform Positives | No. Fecal/E. coli Positives | Brown Water Calls | Fire Hydrant Flushing |
|------------------------------------|------------------------------|-----------------------------|-------------------|-----------------------|
| • 16 | • 0 | • 0 | • 0 | • 0 |

WATER USAGE

Water Production



Water Saved

Reduction Compared to 2013



WASTEWATER SERVICE

Wastewater Laboratory Analysis

| <i>WW Effluent Parameter</i> | <i>Permit Limits</i> | <i>Jan Lab Data</i> | <i>Feb Lab Data</i> |
|--|--------------------------|-------------------------|-------------------------|
| Flow, MG Effluent, monthly total | ██████████ | 39 | 35 |
| Flow, MG Daily Influent Flow, avg. | N/A | 1.5 | 1.5 |
| Flow, MG Daily Discharge Flow, avg. | 2.1 | 1.3 | 1.3 |
| Effluent BOD ₅ , lbs/d, monthly avg. | 390 | 14 | 11 |
| Effluent TSS, lbs/d, monthly avg. | 200* | 11 | 8 |
| Effluent BOD ₅ , mg/L, monthly avg. | 20 | 1 | 1 |
| Effluent TSS, mg/L, monthly avg. | 10* | 1 | 1 |
| Total Coli form 7 day Median Max | 23 | ND | ND |
| Total Coli form Daily Maximum | 240 | ND | 79 |
| % Removal BOD ₅ , monthly avg. | 85% min. | 99% | 99% |
| % Removal, TSS, monthly avg. | 85% min. | 99% | 99% |
| Electrical Conductivity, umhos/cm annual avg. | 2100 | 2160 | 2170 |

* New Limit

WASTEWATER SERVICE

* National Pollution Discharge Elimination System (NPDES)

| NPDES Related Excursions | Permit Parameter | NPDES Parameter Limit | Actual Parameter Result |
|--------------------------|------------------|-----------------------|-------------------------|
| • 0 | • N/A | • N/A | • N/A |

COLLECTION:

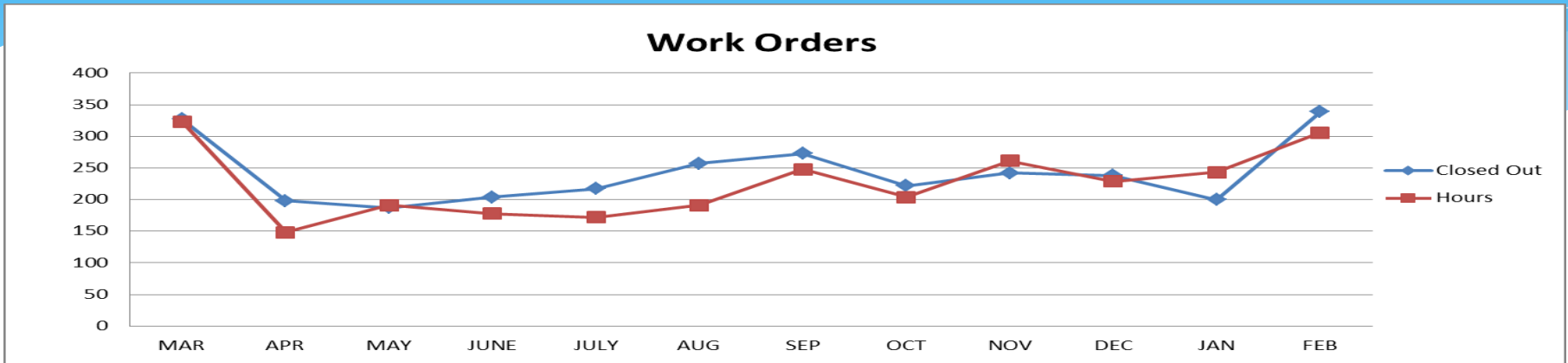
| # of Active Lift Stations | # of Inactive Lift Stations | SSO | Wastewater Received (MG) |
|---------------------------|-----------------------------|-----|--------------------------|
| 15 | 0 | 0 | 42 |

WASTEWATER SERVICE

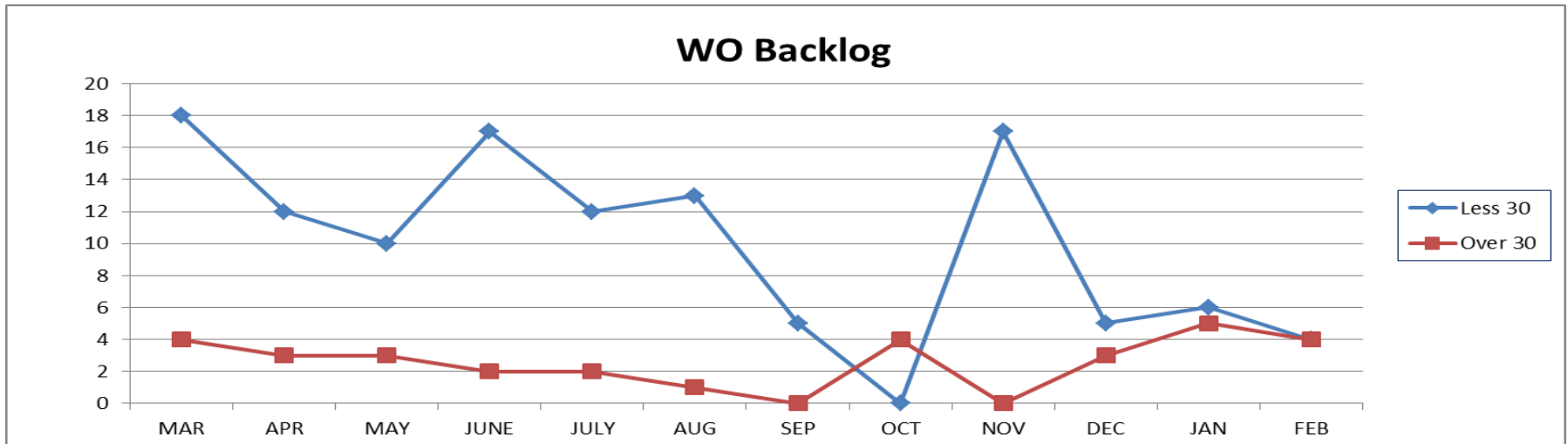
- * Continue sanitary sewer line assessment (53,753)
- * Flushed/CCTV will be performed after assessment
- * Manhole & covers inspection during assessment (217).
- *

Maintenance

Preventive and Corrective



Work Order Back-Log



General Info

Call & Emergency Responses

Call Outs

5

Emergencies

0

Personnel Hours & Overtime:

Regular Hours

1400

Overtime

16

TERMS

| | |
|------|-------------------------------|
| WWTP | WASTEWATER TREATMENT PLANT |
| WTP | WATER TREATMENT PLANT |
| WL | WILLOW LAKE |
| NP | NEWPORT |
| VFD | VARIABLE FREQUENCY DRIVE |
| WO | WORK ORDER |
| PLC | PROGRAMMABLE LOGIC CONTROLLER |
| L/S | LIFT STATION |
| SSO | SANITARY SEWER OVERFLOW |
| BOD | BIOLOGICAL OXYGEN DEMAND |
| TSS | TOTAL SUSPENDED SOLIDS |
| MGD | MILLION GALLONS PER DAY |
| mg/l | MILLIGRAMS PER LITRE |
| CCTV | CLOSED CIRCUIT TELEVISION |
| PPM | PARTS PER MILLION |
| RAS | RETURN ACTIVATED SLUDGE |
| WAS | WATSE ACTIVATED SLUDGE |
| UV | ULTRAVIOLET LIGHT |