



# MONTHLY OPERATIONS REPORT SEPT 2018

Town of Discovery Bay, CA

**3321** Days of Safe Operations

**161,143** worked hours since last recordable incident

# TRAINING: Safety, Operations, & Equipment

## \* TRAINING:

- • Safety
  - West Monthly Regional Safety Webinar
  - Forklift Training
  - International Safety Week
  - Hand Safety
  
- Operation
  - None this Month

# **REPORTS SUBMITTED TO REGULATORY AGENCIES**

- \* Monthly Discharge Monitoring Report (DMR)**
- \* Monthly electronic State Monitoring Report (eSMR)**
- \* Monthly Coliform Report, State Water Board (WD)**

# WATER SERVICES

## Groundwater Well:

- 1B - Active
- 2 – Active
- 4 – Active
- 5B - Active (Standby only)
- 6 – Active
- 7 - Active

## 2018 Water Production Table (MG) by Month

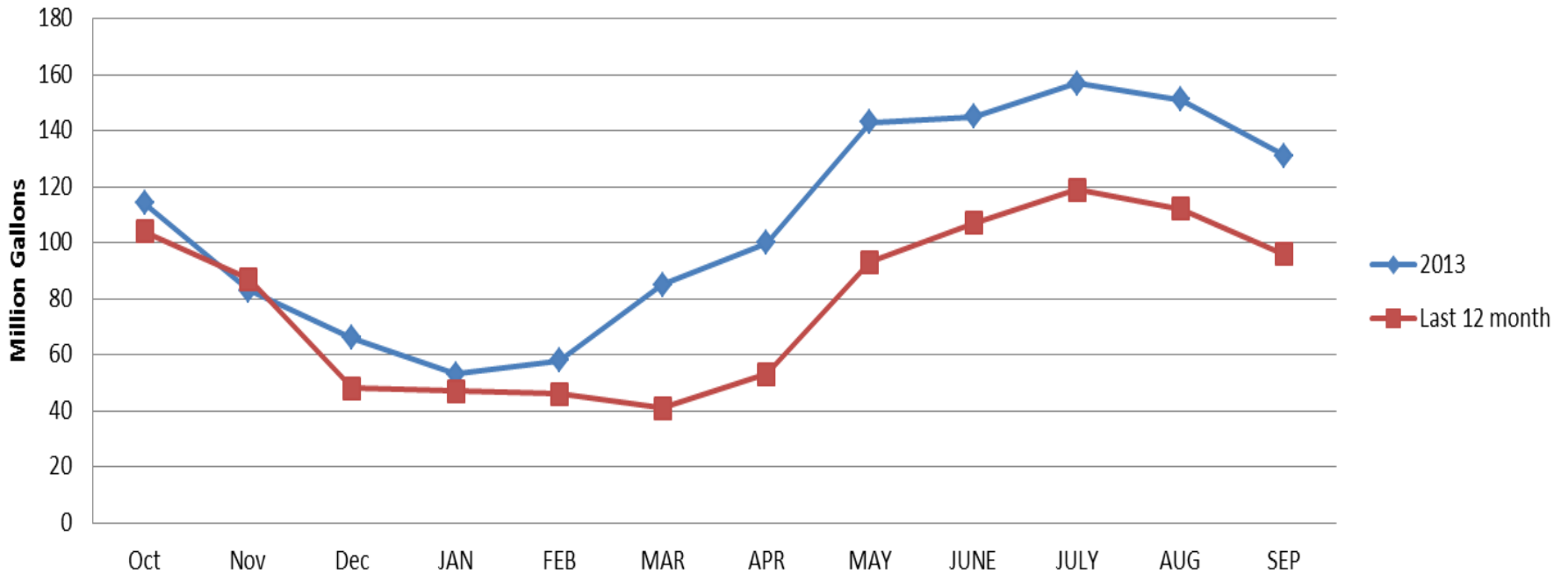
January	February	March	April	May	June
41	46	41	53	93	107
July	August	September	October	November	December
119	112	96			

## Bacteriological Test Results

Routine Bacteria Samples Collected	No. Total Coliform Positives	No. Fecal/E. coli Positives	Brown Water Calls	Fire Hydrant Flushing
• 16	• 0	• 0	• 0	• 4

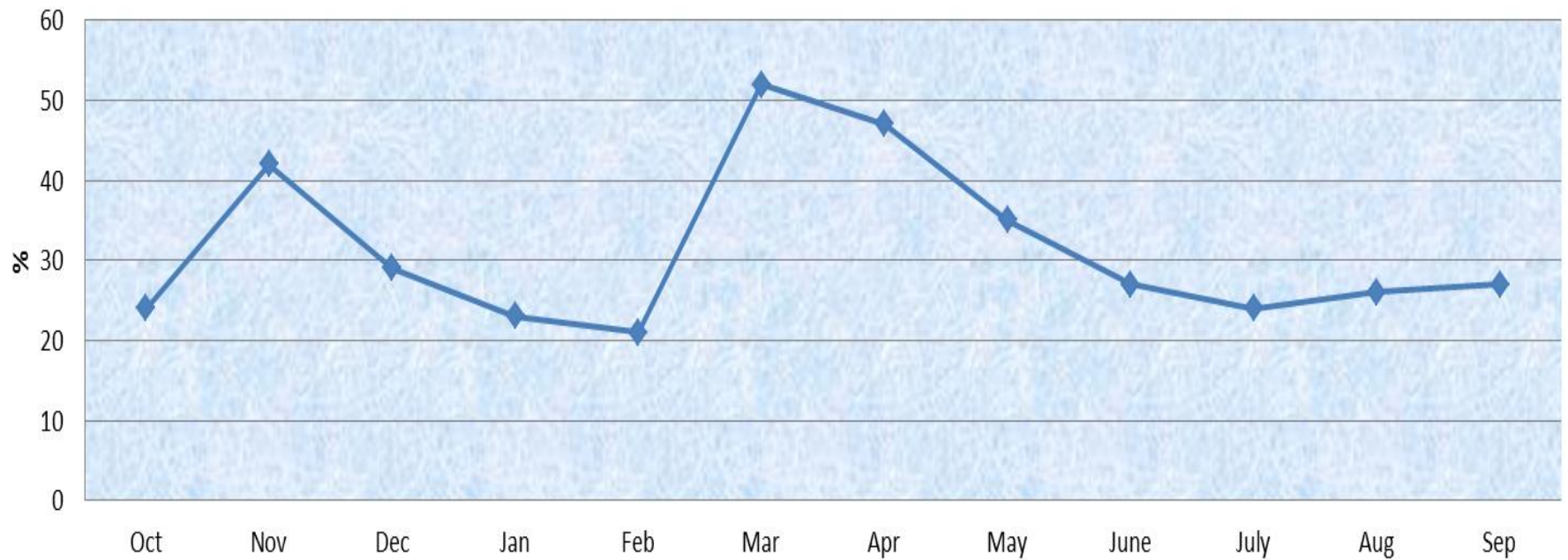
# WATER USAGE

## Water Production

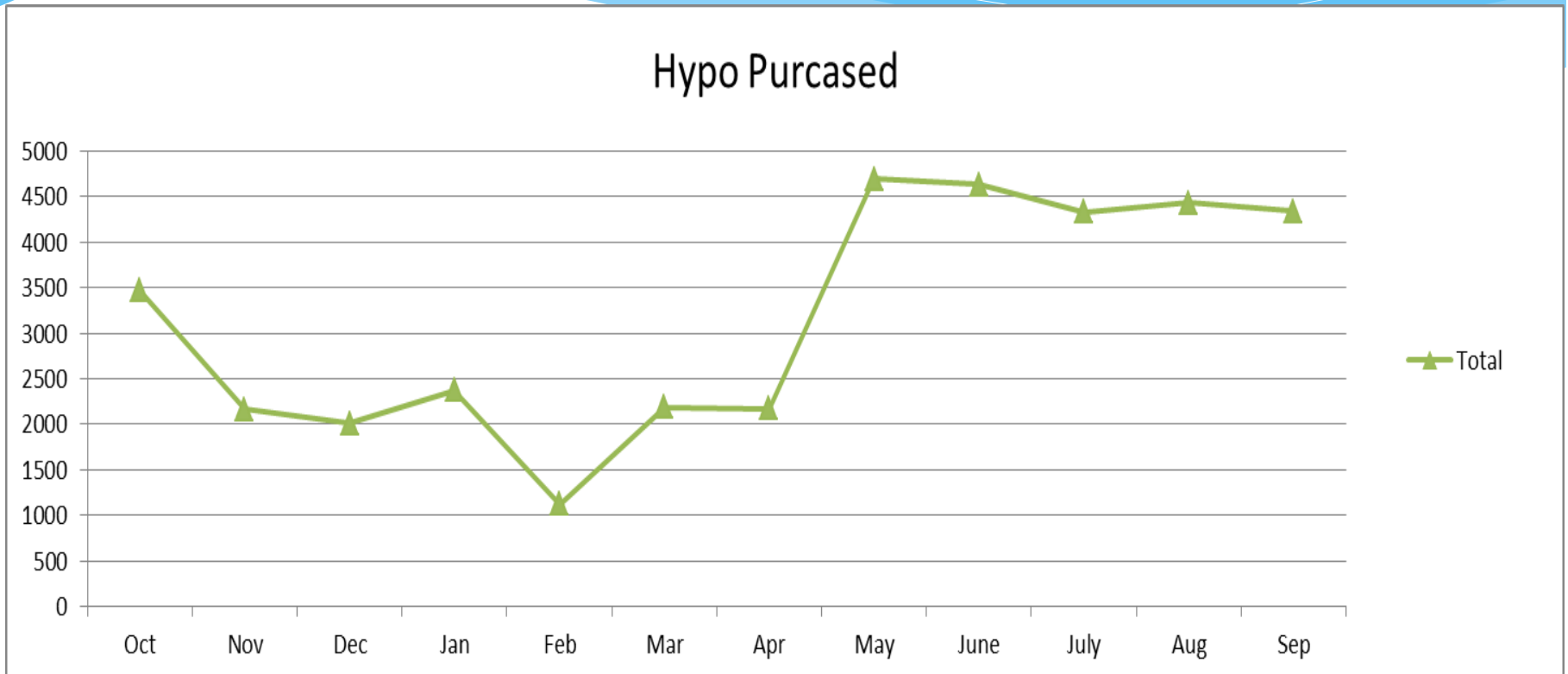


# Water Saved

Reduction



# Chemical Usages



# WASTEWATER SERVICE

## Wastewater Laboratory Analysis

<i>WW Effluent Parameter</i>	<i>Permit Limits</i>	<i>Aug Lab Data</i>	<i>Sept Lab Data</i>
Flow, MG Effluent, <b>monthly total</b>	██████████	36	35
Flow, MG Daily Influent Flow, <b>avg.</b>	N/A	1.4	1.4
Flow, MG Daily Discharge Flow, <b>avg.</b>	2.1	1.2	1.2
Effluent BOD <sub>5</sub> , lbs/d, <b>monthly avg.</b>	390	10	12
Effluent TSS, lbs/d, <b>monthly avg.</b>	200*	5	6
Effluent BOD <sub>5</sub> , mg/L, <b>monthly avg.</b>	20	2	1
Effluent TSS, mg/L, <b>monthly avg.</b>	10*	1	1
Total Coli form 7 day Median Max	23	ND	ND
Total Coli form Daily Maximum	240	ND	ND
% Removal BOD <sub>5</sub> , monthly avg.	85% min.	99	99
% Removal, TSS, monthly avg.	85% min.	99	99
Electrical Conductivity, umhos/cm <b>annual avg.</b>	2100	2165	2177

\* New Limit



# WASTEWATER SERVICE

## \* National Pollution Discharge Elimination System (NPDES)

NPDES Related Excursions	Permit Parameter	NPDES Parameter Limit	Actual Parameter Result
• 0	• N/A	• N/A	• N/A

## COLLECTION:

# of Active Lift Stations	# of Inactive Lift Stations	SSO	Wastewater Received (MG)
15	0	0	42

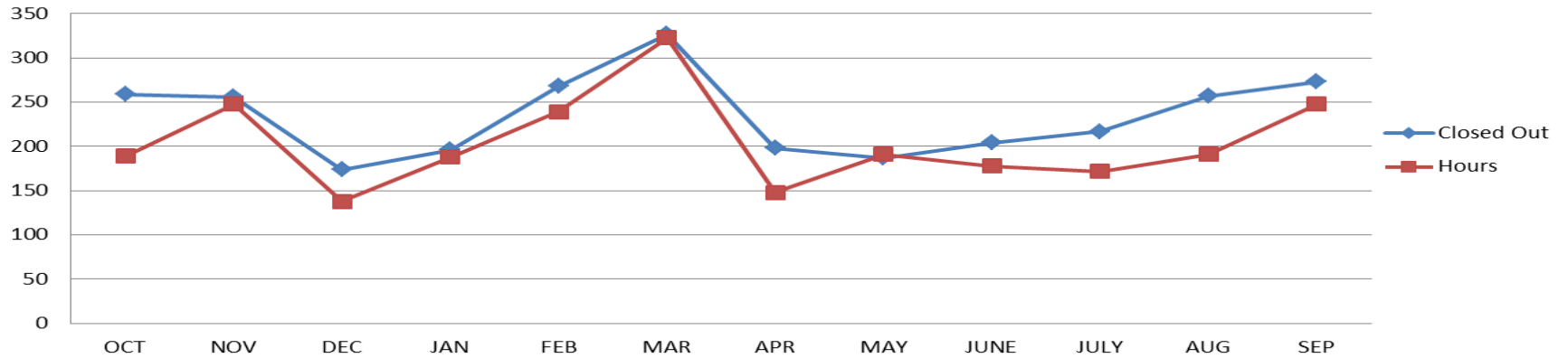
# WASTEWATER SERVICE

- \* Collection sanitary sewer line assessment started
- \* in late Sept (20756’).
- \* flushed/CCTV will be performed after assessment
- \* Began manhole & covers inspection during assessment (77).

# Maintenance

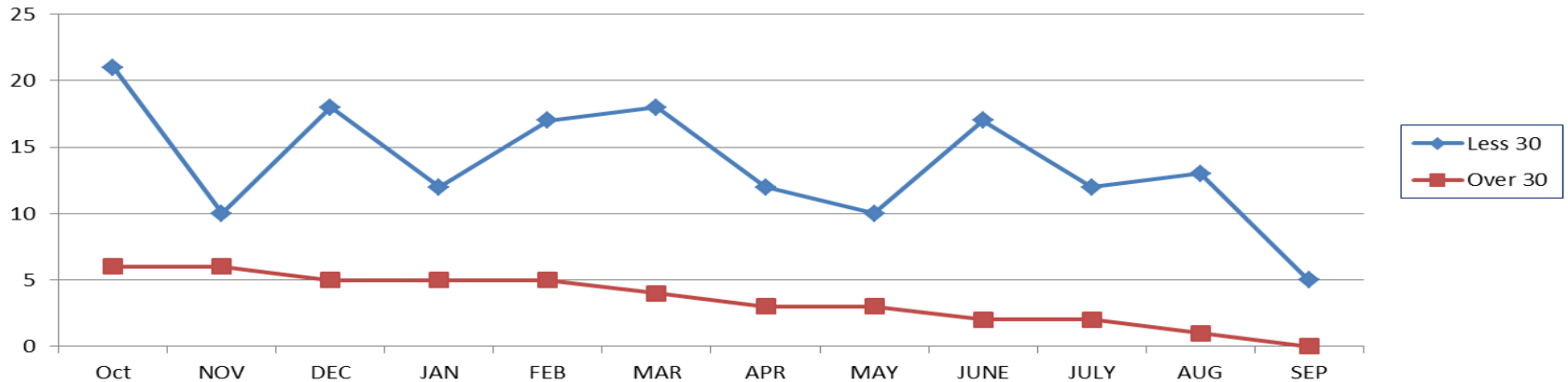
## Preventive and Corrective

### Work Orders



## Work Order Back-Log

### WO Backlog



# General Info

## Call & Emergency Responses

Call Outs

3

Emergencies

0

## Personnel Hours & Overtime:

Regular Hours

1674

Overtime

20

# TERMS

WWTP	WASTEWATER TREATMENT PLANT
WTP	WATER TREATMENT PLANT
WL	WILLOW LAKE
NP	NEWPORT
VFD	VARIABLE FREQUENCY DRIVE
WO	WORK ORDER
PLC	PROGRAMMABLE LOGIC CONTROLLER
L/S	LIFT STATION
SSO	SANITARY SEWER OVERFLOW
BOD	BIOLOGICAL OXYGEN DEMAND
TSS	TOTAL SUSPENDED SOLIDS
MGD	MILLION GALLONS PER DAY
mg/l	MILLIGRAMS PER LITRE
CCTV	CLOSED CIRCUIT TELEVISION
PPM	PARTS PER MILLION
RAS	RETURN ACTIVATED SLUDGE
WAS	WATSE ACTIVATED SLUDGE
UV	ULTRAVIOLET LIGHT