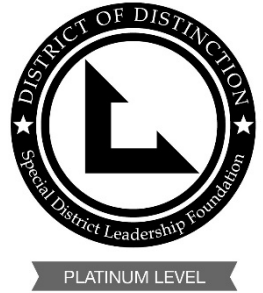




TOWN OF DISCOVERY BAY

A COMMUNITY SERVICES DISTRICT



SDLF Platinum-Level of Governance

President – Carolyn Graham • Vice-President – Bryon Gutow • Director – Kevin Graves • Director – Ashley Porter • Director – Lesley Belcher

**NOTICE OF THE REGULAR MEETING
OF THE PARKS AND RECREATION COMMITTEE
OF THE TOWN OF DISCOVERY BAY
Wednesday, March 5, 2025, 4:30 P.M.**

TO ATTEND IN PERSON: The meeting will be held at the Community Center located at 1601 Discovery Bay Boulevard.

In addition to physical attendance at the address indicated above, the Town of Discovery Bay Community Services District is offering the following teleconferencing options as an alternative means for the public to participate in this meeting.

TO ATTEND BY ZOOM WEBINAR: <https://us06web.zoom.us/j/83080753986>

TO ATTEND BY PHONE: +1 (669) 444 9171 or +1 (719) 359 4580 **WEBINAR ID:** 830 8075 3986

Download Agenda Packet and Materials at <http://www.todb.ca.gov/>

Parks and Recreation Committee Members

*Carolyn Graham
Bryon Gutow*

A. ROLL CALL

1. Call business meeting to order 4:30 p.m.
2. Roll Call.

B. PUBLIC COMMENTS (Individual Public Comments will be limited to a 3-minute time limit)

During Public Comments, the public may address the Committee on any issue within the District's jurisdiction which is not on the Agenda. The public may comment on any item on the Agenda at the time the item is before the Committee for consideration. Any person wishing to speak will have 3 minutes to make their comment. There will be no dialog between the Committee and the commenter as the law strictly limits the ability of Committee members to discuss matters not on the agenda. We ask that you refrain from personal attacks during comment, and that you address all comments to the Committee only. Any clarifying questions from the Committee must go through the Chair. Comments from the public do not necessarily reflect the viewpoint of the Committee members.

C. DRAFT MINUTES TO BE APPROVED

1. Approve SPECIAL Parks and Recreation DRAFT Meeting minutes of June 5, 2024.

D. UPDATES

E. DISCUSSION

1. Discussion Regarding Establishing Chair and Vice-Chair.
2. Discussion and Possible Feedback to Approve Agreement with Monarch Landscape/Jensen Landscape Companies for Landscape Improvements on the Laguna Court Islands and Willow Lake Court Island.
3. Discussion and Possible Feedback to Approve Agreements with Monarch Landscape/Jensen Landscape Companies for Landscape Improvements on the Sand Point Road Island.
4. Discussion and Possible Feedback to Approve Agreements with Monarch Landscape/Jensen Landscape Companies for Landscape Improvements and Tree Removal on Sand Point Road Including the Corner of Discovery Bay Blvd.
5. Discussion and Possible Feedback to Approve Agreement with Monarch Landscape Companies/Jensen Landscape for the Enhancement Project at Ravenswood Park.
6. Discussion and Possible Feedback to Move Forward with Prop 68 Per Capita Grant, Phase II at Cornell Park.
7. Discussion and Possible Feedback Regarding Safety Bollards at Cornell Park.

E. FUTURE DISCUSSION/AGENDA ITEMS

F. ADJOURNMENT

1. Adjourn to the next Standing Parks and Recreation Committee meeting at the Community Center located at 1601 Discovery Bay Boulevard.

"This agenda shall be made available upon request in alternative formats to persons with a disability, as required by the American with Disabilities Act of 1990 (42 U.S.C. § 12132) and the Ralph M. Brown Act (California Government Code § 54954.2). Persons requesting a disability related modification or accommodation in order to participate in the meeting should contact the Town of Discovery Bay, at (925) 634-1131, during regular business hours, at least forty-eight hours prior to the time of the meeting."

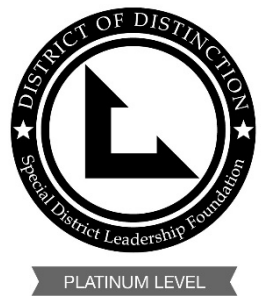
"Materials related to an item on the Agenda submitted to the Town of Discovery Bay after distribution of the agenda packet are available for public inspection in the District Office located at 1800 Willow Lake Road during normal business hours."



TOWN OF DISCOVERY BAY

A COMMUNITY SERVICES DISTRICT

SDLF Platinum-Level of Governance



President – Michael Callahan • Vice-President – Carolyn Graham • Director – Kevin Graves • Director – Bryon Gutow • Director – Ashley Porter

MINUTES OF THE SPECIAL MEETING OF THE PARKS AND RECREATION COMMITTEE OF THE TOWN OF DISCOVERY BAY Wednesday, June 5, 2024 3:30 P.M.

Parks and Recreation Committee Members

Chair Bryon Gutow

Vice-Chair Michael Callahan

A. ROLL CALL

1. Called business meeting to order 3:30 p.m.
2. Roll call was taken, and all members were present.

B. PUBLIC COMMENTS (Individual Public Comments will be limited to a 3-minute time limit)

None.

C. DRAFT MINUTES TO BE APPROVED

1. Approve Regular Parks and Recreation DRAFT Meeting minutes of May 1, 2024.

Vice- Chair Callahan made a motion to approve the Parks and Recreation DRAFT meeting minutes of May 1, 2024.

Chair Gutow seconded the motion.

Vote: Motion Carried – AYES: 2, NOES: 0, ABSTAINED:0, ABSENT: 0.

D. UPDATES

None.

E. DISCUSSION

1. Discussion and Possible Feedback Regarding the San Joaquin County Office of Education (SJCOE) – Contract Extension.

Presented by Parks and Landscape Manager Monica Gallo.

- Staff would like to extend the contract with the San Joaquin County Office of Education.
- Requesting an extension from twelve weeks to eighteen weeks to help through the summer months.
- Committee recommends bringing item to a future Board of Directors Meeting.

2. Discussion and Possible Feedback to Approve Agreement with AQUAWORX/MRC/GameTime to Replace Ravenswood Park Splash Pad in Zone 9.

Presented by Parks and Landscape Manager Monica Gallo.

- Zone 9 has money saved in reserves for various repairs and replacement projects.
- Original splash pad was constructed in 2011 and has required multiple repairs.
- The current splash pad was purchased through a Canadian company which has made repairs challenging.
- The replacement splash pad has local reps that would make maintenance and repairs much easier.
- Staff would like to start the project after the summer months so there is no down time.
- Committee recommends bringing it to the Board of Directors at a future meeting.

Public Comment:

- Speaker feels 90% payment upfront seems excessive. He mentioned a discussion on this subject on Nextdoor.

E. FUTURE DISCUSSION/AGENDA ITEMS

None.

F. ADJOURNMENT

1. Adjourned at 3:49p.m. to the next Standing Parks and Recreation Committee meeting at the Community Center located at 1601 Discovery Bay Boulevard.



Town of Discovery Bay

“A Community Services District”

STAFF REPORT

Agenda Title: Discussion and Possible Feedback to Approve Agreement with Monarch Landscape/Jensen Landscape Companies for Landscape Improvements on the Laguna Court Islands and Willow Lake Court Island.

Meeting Date: March 5, 2025

Prepared By: Monica Gallo, Landscape Manager

Submitted By: Dina Breitstein, General Manager

RECOMMENDED ACTION:

Provide feedback regarding the approval of the agreements with Monarch Landscape/Jensen Landscape Companies for landscape improvements on the Laguna Court Islands for an amount of \$44,576.15, plus 15% Contingency, And the Willow Lake Court Island for an amount of \$35,082.54, plus 15% Contingency.

EXECUTIVE SUMMARY:

In October 2014, The Town of Discovery Board of Directors, passed Ordinance No. 25 <https://todb.specialdistrict.org/files/bae8cf0c0/Ordinance025.pdf> . The purpose of Ordinance No. 25 is to protect the health, safety, and welfare of residents of the Town of Discovery Bay, CSD; to respond to the current drought crisis and *other possible crises in the future*; to authorize the BOD to declare a water shortage emergency; and to regulate water usage with the District for the purpose of conserving severely limited water resources.

In the spring of 2015, the Town of Discovery Bay joined the effort in the “Brown Is the New Green” campaign to save our water and shortly thereafter began moving to dry scape in an effort to do our part and lessen the use of water for irrigation of ornamental turf on public street medians in both Town owned areas as well as County owned areas.

Since this effort has begun, we have completed the following areas sticking with a common and continuous theme:

ZONE 8	ZONE 9	ZONE 35	ZONE 57	ZONE 61
Clipper Drive	Poe Drive	Bixler Road Medians	Corner of Bixler/Regatta Drive	Preston & Point of Timber
DB Blvd. Large Islands (2)	Wilde Drive		Regatta Park Entrance	
So. Point			Yacht/Foghorn Overflow Parking	
Cabrillo Point				
Discovery Point				

Considering the recent unfortunate fires in Southern California, this is a good reminder of why it is crucial to continue our efforts in water conservation. Staff is proud to share with you our past and future efforts in continuing to honor this commitment.

Zone 8 consists of several landscape median islands at the end of residential cul-de-sacs that are estimated to be

25-30 years old and have had no improvements since that time.

In December 2024, the Board of Directors approved to begin work on South Point, Cabrillo Point and Discovery Point.

- South Point - COMPLETE
- Cabrillo Point – COMPLETE
- Discovery Point – COMPLETE
- Laguna Court
- Willow Lake Court – small
- Willow Lake Island - large

As mentioned in December, staff have a plan to work our way through these landscape median islands as budgeting allows us to re-landscape and install drip irrigation to these aging areas.

Laguna Court has 2 landscape islands and Willow Lake Court has one landscape island at the end of the courts. Included with this report are current pictures of the condition of the landscaping at both Laguna Court and Willow Lake Court as well as pictures of our proposed landscape improvements.

Staff received proposals from Monarch Landscape/Jensen Landscape Companies in the amount of \$44,576.15 for the Laguna Court Islands and \$35,082.54 for the Willow Lake Court Island through its OMNIA cooperative agreement (District's OMNIA participant ID #1029102, Monarch Landscape /Jensen Landscape Companies participant ID #5480782). Cooperative agreements are allowed by District's Policy 011 Purchasing and Procurement. The benefit of a cooperative agreement is that the competition has been already conducted by another agency and the Town benefits from their negotiations.

FISCAL IMPACT:

Hoffman Funds as of March 2025

\$882,300 Committed to be spent

\$487,700 Hoffman Funds Remaining as of March 2025

<\$79,658.69> If Laguna Court Island & Willow Lake Court Islands are Approved.

\$408,041.31 Remaining Hoffman Funds

PREVIOUS RELEVANT BOARD ACTIONS FOR THIS ITEM:

None.

ATTACHMENTS:

1. Current Pictures of Laguna Court Islands.
2. Current Pictures of Willow Lake Court Island.
3. Monarch Landscape/Jensen Landscape Companies Designs and Proposal – Laguna Ct.
4. Monarch Landscape/Jensen Landscape Companies Designs and Proposal – Willow Lake Ct.

Laguna Court Islands



Willow Lake Court Island





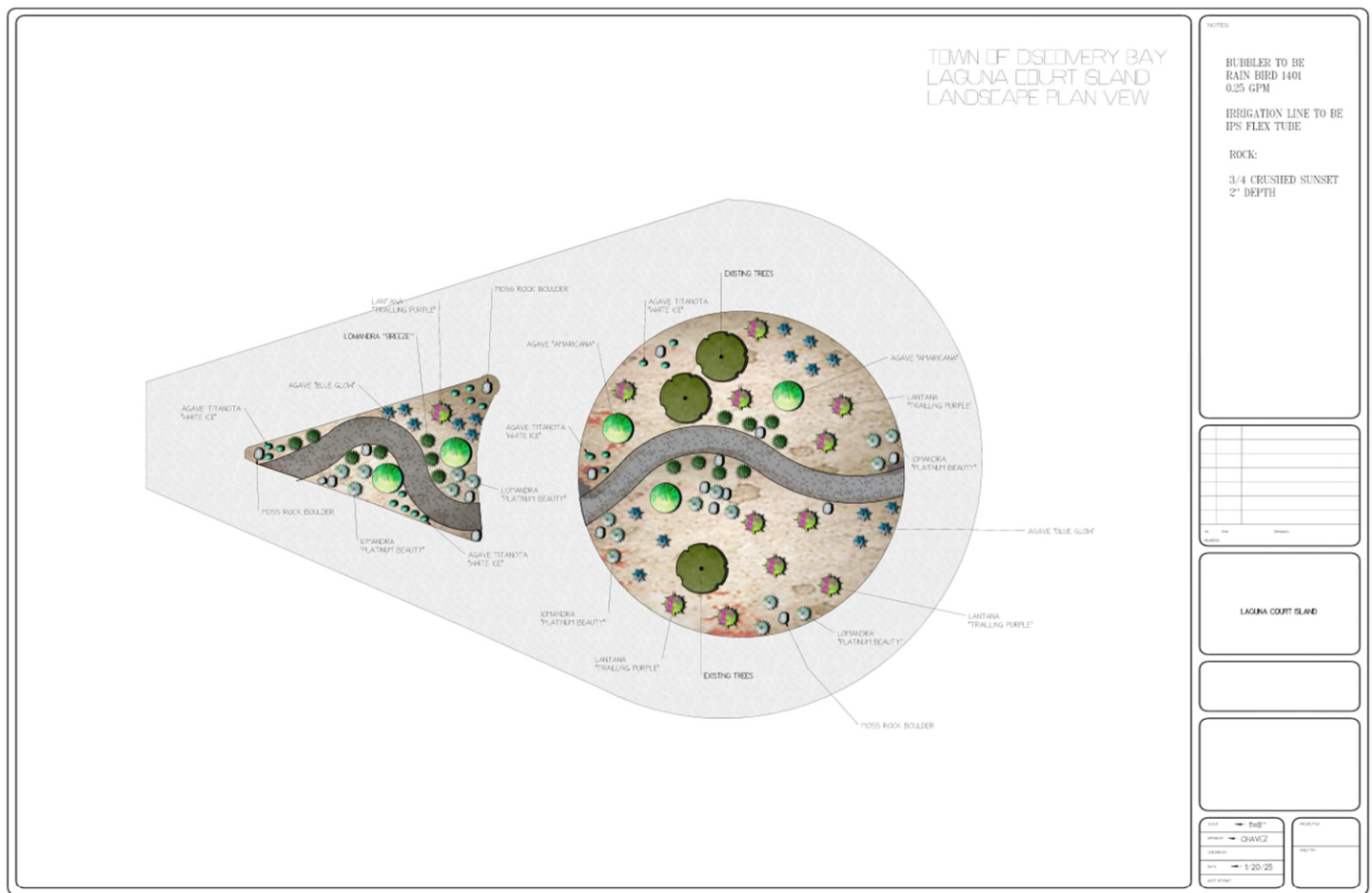
January 21, 2024

Site: TOWN OF DISCOVERY BAY
JLS Job #: Laguna CT
Re: Landscape and Irrigation Upgrades

Dear Monica,

Thank you for allowing Jensen Landscape Services the opportunity to provide you with this proposal. We propose to provide all labor, material, and equipment necessary to complete the following scope of work with the noted qualifications and exclusions.

Scope of work: Demo existing shrubs, ice plant groundcover install all new Bubbler irrigation and install new plants with rock at Laguna Ct islands



- Demo existing ice plant groundcover
- Cap all existing sprinkler heads (no longer needed)
- Convert valve to Bubbler irrigation
- Install new Bubblers to each installed plant
- Install 1 each 1 station Hunter Node
- Install bubbler irrigation to existing trees
- Install 5 each 15 gallon Agave americana “Alba”
- Install 18 each 1 gallon Lomandra (Platinum Beauty)
- Install 15 each Lomandra longifolia “Breeze”
- Install 12 each 5 gallon Lantana (Trailing Purple)
- Install 17 each 1 gallon agave Titona” white Ice”
- Install 18 each 2 gallon agave “blue glow”
- Install 3 each 300 pound Boulder
- Install 15 each 700 pound boulder
- 3” dip around curve as needed
- Install Permeable landscape fabric
- Install ¾ sunset rock
- Clean up job related debris and haul away

Cost\$ 44,576.15

Approval Signature

Date

Plant Palette



Lantana montevidensis
‘Sellowiana’
Purple Trailing Lantana



Lomandra longifolia
‘Platinum Beauty’
Variegated Mat Rush

Landscape Services, Inc.



**Agave americana var. medio-
 picta 'Alba'**
White Striped Century Plant



Lomandra longifolia
'Breeze'
Dwarf Mat Rush



Sunset Rock
3/4" Crushed



Agave Titanota
'White Ice'
Dwarf Agave



Moss Rock Boulder



Agave x Blue Glow
'Blue Glow'
Dwarf Blue Agave

Qualifications:

1. Assumes no underground utilities or other underground obstructions are in conflict with the work to be performed by Jensen Landscape Services or its subcontractors. If there are, or the client suspects that there may be, they are to be located by others prior to start of work.
2. Assumes all irrigation wires and valves are available and in good, operating condition and can accommodate the above enhancements. This includes new and modified irrigation.
3. Layout, supervision, and quality control measures are included in the program.
4. Photos do not represent actual sizes of installed plants nor year-round color.

Exclusions:

Jensen Landscape Services is not responsible for permits, fees, damage to underground utilities not located prior to start of work, backflow preventer unit, drainage system installation, viability of transplanted plants, repair of damaged hardscape beyond our control, and other unknown items not shown on client-submitted, as-built drawing.



MONARCH

LANDSCAPE COMPANIES

Sincerely,
Rhett Hastings
Senior Project Manager
Cell: (925) 315-0267
Email: Rhett.hastings@jensencorp.com

- Clear and grub landscape and haul away debris
- Change 1 each irrigation valve to drip
- Install IPS Drip Irrigation System with Bubblers
- Install 3 each Tree Bubblers
- Install 12 each 1-gallon Lomandra ‘Platinum Beauty’
- Install 15 each 1-gallon Lomandra ‘Breeze’
- Install 16 each 2-gallon Agave ‘White Ice’
- Install 15 each 2-gallon Agave ‘Blue Glow’
- Install 4 each 15-gallon Agave americana ‘Alba’
- Install 9 each 5-gallon Lantana trailing purple
- Install 1 each 24” box Arbutus marina standard trunk with stakes and bubblers
- Install Dry Creek composed of three sizes of cobblestones
- Install 6 yards of 4” x 6” cobblestone
- Install 3.5 yards of 2” x 4” cobblestone
- Install 1 yards of 1” x 2” cobblestone
- Install water permeable landscape fabric
- Install 14 cubic yards of ‘Sunset’ ¾” rock
- Install 4 each approximately 1000-pound boulders
- Install 6 each approximately 750-pound boulders
- Install 5 each approximately 500-pound boulders
- Install 2 each approximately 300-pound boulders
- Clean up job related debris and haul away

Cost\$35,082.54

Approval Signature

Date

Plant Palette



**Lomandra longifolia
 'Breeze'
 Dwarf Mat Rush**



**Lomandra longifolia
 'Platinum Beauty'
 Variegated Mat Rush**



**Lantana montevidensis
 'Sellowiana'
 Purple Trailing Lantana**



**Agave americana var. medio-
 picta 'Alba'
 White Striped Century Plant**



**Agave titanota
 'White Ice'
 Rancho Tambor Agave**



**Agave x Blue Glow
 'Blue Glow'
 Dwarf Blue Agave**



**Arbutus x marina
 Standard Trunk
 Strawberry Tree**



**Sunset Rock
 3/4\"/>**



Thank you again for the opportunity to present our budget to you. If you have any questions, please contact me at your earliest convenience.

Qualifications:

1. Assumes no underground utilities or other underground obstructions are in conflict with the work to be performed by Jensen Landscape Services or its subcontractors. If there are, or the client suspects that there may be, they are to be located by others prior to start of work.
2. Assumes all irrigation wires and valves are available and in good, operating condition and can accommodate the above enhancements. This includes new and modified irrigation.
3. Layout, supervision, and quality control measures are included in the program.
4. Photos do not represent actual sizes of installed plants nor year-round color.

Exclusions:

Jensen Landscape Services is not responsible for permits, fees, damage to underground utilities not located prior to start of work, backflow preventer unit, drainage system installation, viability of transplanted plants, repair of damaged hardscape beyond our control, and other unknown items not shown on client-submitted, as-built drawing.

Sincerely,
Rhett Hastings
Senior Project Manager
Cell: (925) 315-0267
Email: Rhett.hastings@jensencorp.com



Town of Discovery Bay

“A Community Services District”

STAFF REPORT

Agenda Title: Discussion and Possible Feedback to Approve Agreements with Monarch Landscape/Jensen Landscape Companies for Landscape Improvements on the Sand Point Road Island.

Meeting Date: March 5, 2025

Prepared By: Monica Gallo, Landscape Manager

Submitted By: Dina Breitstein, General Manager

RECOMMENDED ACTION:

Provide feedback regarding the approval of the agreement with Monarch Landscape/Jensen Landscape Companies for landscape improvements on the Sand Point Road Island for an amount of \$114,886.30, plus 15% Contingency.

EXECUTIVE SUMMARY:

Sand Point Road Island is located in Zone 8 and has not had any major landscape improvements in decades.

December 2024, staff brought to the Boards attention the much-needed landscape improvements at South Point, Cabrillo Point, Discovery Point, Laguna Court, Willow Lake Court and the Willow Lake Island. Staff explained we have a plan to work our way through these landscape median islands as budgeting allows us to re-landscape and move to a more water conscious landscape for these aging areas.

In December 2024, the Board of Directors approved to begin work on South Point, Cabrillo Point and Discovery Point. Laguna Court and Willow Lake Court are on the agenda for today’s meeting for discussion.

As the staff continues to assess the landscape improvement needs of the Town, we would like our next improvement project to be the Sand Point Road Island.

Staff received a proposal from Monarch Landscape/Jensen Landscape Companies in the amount of \$114,886.30 for the Sand Point Road Island through its OMNIA cooperative agreement (District’s OMNIA participant ID #1029102, Monarch Landscape /Jensen Landscape Companies participant ID #5480782). Cooperative agreements are allowed by District’s Policy 011 Purchasing and Procurement. The benefit of a cooperative agreement is that the competition has been already conducted by another agency and the Town benefits from their negotiations.

FISCAL IMPACT:

Hoffman Funds as of March 2025
\$882,300 Committed to be spent

\$487,700 Hoffman Funds Remaining as of March 2025
<\$79,658.69> If Laguna Court Island & Willow Lake Court Islands are Approved.
<\$114,886.30> If Sand Point Road Island is Approved.
\$293,155.01 Remaining Hoffman Funds.

PREVIOUS RELEVANT BOARD ACTIONS FOR THIS ITEM:

None.

ATTACHMENTS:

1. Current Pictures of Sand Point Road Island.
2. Monarch Landscape/Jensen Landscape Companies Design and Proposal.

Sand Point Road Island





- Clear and grub landscape and haul away debris
- Change 6 each irrigation valve to drip
- Install IPS Drip Irrigation System with Bubblers
- Install 18 each Tree Bubblers
- Install 22 each 1-gallon Lomandra 'Platinum Beauty'
- Install 27 each 1-gallon Lomandra 'Breeze'
- Install 19 each 2-gallon Agave 'White Ice'
- Install 27 each 2-gallon Agave 'Blue Glow'
- Install 11 each 15-gallon Agave americana 'Alba'
- Install 12 each 5-gallon Lantana 'Dallas Red'
- Install 18 each 5-gallon Lantana trailing purple
- Install Dry Creek composed of three sizes of cobblestones
- Install 17.5 yards of 4" x 8" cobblestone
- Install 16 yards of 2" x 4" cobblestone
- Install 8 yards of 1" x 2" cobblestone
- Install water permeable landscape fabric
- Install 78 cubic yards of 'Sunset' ¾" rock
- Install 9 each approximately 700-pound boulders
- Install 10 each approximately 500-pound boulders
- Install 16 each approximately 300-pound boulders
- Clean up job related debris and haul away

Cost\$114,886.30

Approval Signature

Date

Plant Palette



Lomandra longifolia
'Breeze'
Dwarf Mat Rush



Lomandra longifolia
'Platinum Beauty'
Variegated Mat Rush



Lantana montevidensis
'Sellowiana'
Purple Trailing Lantana



Agave americana var. medio-
picta 'Alba'
White Striped Century Plant



Agave titanota
'White Ice'
Rancho Tambor Agave



Agave x Blue Glow
'Blue Glow'
Dwarf Blue Agave



Lantana camara
'Dallas Red'
Trailing Red Lantana



Sunset Rock
3/4\"/>



Thank you again for the opportunity to present our budget to you. If you have any questions, please contact me at your earliest convenience.

Qualifications:

1. Assumes no underground utilities or other underground obstructions are in conflict with the work to be performed by Jensen Landscape Services or its subcontractors. If there are, or the client suspects that there may be, they are to be located by others prior to start of work.
2. Assumes all irrigation wires and valves are available and in good, operating condition and can accommodate the above enhancements. This includes new and modified irrigation.
3. Layout, supervision, and quality control measures are included in the program.
4. Photos do not represent actual sizes of installed plants nor year-round color.

Exclusions:

Jensen Landscape Services is not responsible for permits, fees, damage to underground utilities not located prior to start of work, backflow preventer unit, drainage system installation, viability of transplanted plants, repair of damaged hardscape beyond our control, and other unknown items not shown on client-submitted, as-built drawing.

Sincerely,
Rhett Hastings
Senior Project Manager
Cell: (925) 315-0267
Email: Rhett.hastings@jensencorp.com



Town of Discovery Bay

“A Community Services District”

STAFF REPORT

Agenda Title: Discussion and Possible Feedback to Approve Agreements with Monarch Landscape/Jensen Landscape Companies for Landscape Improvements and Tree Removal on Sand Point Road Including the Corner of Discovery Bay Blvd.

Meeting Date: March 5, 2025

Prepared By: Monica Gallo, Landscape Manager

Submitted By: Dina Breitstein, General Manager

RECOMMENDED ACTION:

Provide feedback regarding the approval of the agreement with Monarch Landscape/Jensen Landscape Companies for landscape improvements on Sand Point Road to include the corner of Discovery Bay Blvd. for an amount of \$134,508.43, plus 15% Contingency. And the agreement with Monarch Tree Service for Tree Removal and Tree Crowning for an amount of \$8,980.00, plus 15% Contingency.

EXECUTIVE SUMMARY:

Staff have been reporting out in recent months about our landscape master plan which includes not only upgrading irrigation control boxes, landscape enhancements in medians, streetscapes, and parks, updated irrigation and moving in a direction of water conservation, but also reviewing our aging playgrounds, splash pad and park amenities.

At the meeting this afternoon we are presenting in a separate staff report the proposed landscape improvements at Sand Point Road Island. In an effort to continue in an area from start to finish, the goal is to break up this area of town up in phases.

Phase 1 – Sand Point Road Island. – *presented this afternoon.*

Phase 2 – Sand Point Road Streetscape to the Corner of Discovery Bay Blvd. – *presented in this staff report.*

Phase 3 – Discovery Bay Blvd. (West Side) to the Corner of Seal Way. – *future plans to be presented at a later date.*

Phase 4 – Seal Way. – *future plans to be presented at a later date.*

Staff received a proposal from Monarch Landscape/Jensen Landscape Companies in the amount of \$134,508.43 for the Sand Point Road Streetscape and a proposal from Monarch Tree Service in the amount of \$8,980.00 through its OMNIA cooperative agreement (District's OMNIA participant ID #1029102, Monarch Landscape/Jensen Landscape Companies participant ID #5480782). Cooperative agreements are allowed by District's Policy 011 Purchasing and Procurement. The benefit of a cooperative agreement is that the competition has been already conducted by another agency and the Town benefits from their negotiations.

FISCAL IMPACT:

Hoffman Funds as of March 2025
\$882,300 Committed to be spent

\$487,700 Hoffman Funds Remaining as of March 2025
<\$79,658.69> If Laguna Court Island & Willow Lake Court Islands are Approved.
<\$114,886.30> If Sand Point Road Island is Approved.
<\$134,508.43> If Sand Point Road Streetscape is Approved.
<\$8,980.00> If Sand Point Road Streetscape Tree Work is Approved.

\$149,666.58 Remaining Hoffman Funds

PREVIOUS RELEVANT BOARD ACTIONS FOR THIS ITEM:

None.

ATTACHMENTS:

1. Current Pictures of Sand Point Road Streetscape.
2. Monarch Landscape/Jensen Landscape Companies Design and Proposal.
3. Monarch Tree Service Proposal.

Sand Point Road Streetscape







- Clear and grub landscape and haul away debris
- Change 7 each irrigation valve to drip
- Install Netafim drip irrigation
- Install 7 each drip flush valves with box
- Install 7 each drip pressure indicators
- Install 7 each drip air relief valves with box
- Install 4 each 24" Box Crape Myrtle 'Tuscarora'
- Install 57 each 1-gallon Lomandra 'Breeze'
- Install 71 each 1-gallon Lomandra 'Platinum Beauty'
- Install 42 each 1-gallon Agapanthus 'Tinkerbell'
- Install 116 each 2-gallon Carpet Rose 'Scarlet'
- Install 96 each 1-gallon Myoporum Groundcover
- Install 24 each 5-gallon Purple Lantana
- Install 131 each 5-gallon Pittosporum tobira Variegata
- Install 29 each 5-gallon Lantana 'Dallas Red'
- Install 22 each 5-gallon Brilliant Pink Iceberg Rose
- Install 10 each approximately 500-pound Boulders
- Install 21 each approximately 700-pound Boulders
- Install 4 each approximately 1,000-pound Boulders
- Install Jute Mesh Netting to prevent mulch from sliding
- Install 160 yards of Mahogany Pro Chip Mulch
- Clean up job related debris and haul away

Cost\$134,508.43

Approval Signature

Date

Plant Palette



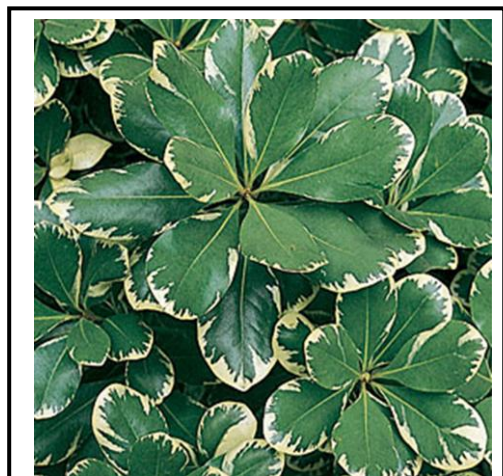
Lomandra longifolia
'Breeze'
Dwarf Mat Rush



Lomandra longifolia
'Platinum Beauty'
Variegated Mat Rush



Lantana montevidensis
'Sellowiana'
Purple Trailing Lantana



Pittosporum tobira
'Variegata'
Variegated Pittosporum



**Rosa x hybrid
 'Scarlet'
 Scarlet Carpet Rose**



**Lagerstroemia indica
 'Tuscarora'
 Crape Myrtle 'Tuscarora'**



**Rosa x hybrid
 'Brilliant Pink Iceberg'
 Pink Iceberg Rose**



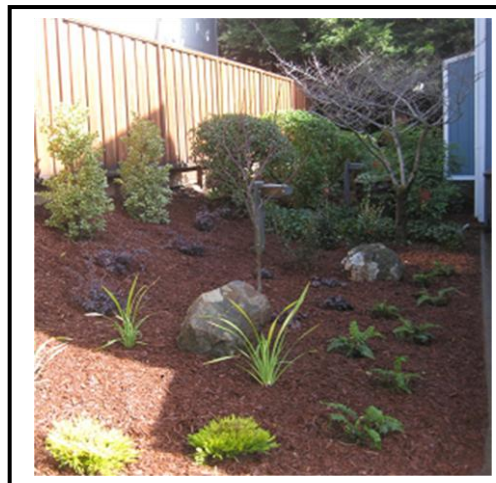
**Agapanthus orientalis variegata
 'Tinkerbelle'
 Tinkerbelle Agapanthus**



Lantana camara
'Dallas Red'
Trailing Red Lantana



Myoporum parvifolium
'Putah Creek'
Myoporum Ground Cover



Mahogany Pro Chip Mulch
Example



Thank you again for the opportunity to present our budget to you. If you have any questions, please contact me at your earliest convenience.

Qualifications:

1. Assumes no underground utilities or other underground obstructions are in conflict with the work to be performed by Jensen Landscape Services or its subcontractors. If there are, or the client suspects that there may be, they are to be located by others prior to start of work.
2. Assumes all irrigation wires and valves are available and in good, operating condition and can accommodate the above enhancements. This includes new and modified irrigation.
3. Layout, supervision, and quality control measures are included in the program.
4. Photos do not represent actual sizes of installed plants nor year-round color.

Exclusions:

Jensen Landscape Services is not responsible for permits, fees, damage to underground utilities not located prior to start of work, backflow preventer unit, drainage system installation, viability of transplanted plants, repair of damaged hardscape beyond our control, and other unknown items not shown on client-submitted, as-built drawing.

Sincerely,
Rhett Hastings
Senior Project Manager
Cell: (925) 315-0267
Email: Rhett.hastings@jensencorp.com

Proposed Tree Care Services

Tree Quantity: 35

Proposal Value: \$8,980

February 18, 2025

Proposal #: 965494



Tree Care Service Address/Location
Discovery Bay - Area 2 Jan. 10. 2025
Sand Point Rd
Discovery Bay, California 94505
Monica Gallo
mgallo@todb.ca.gov

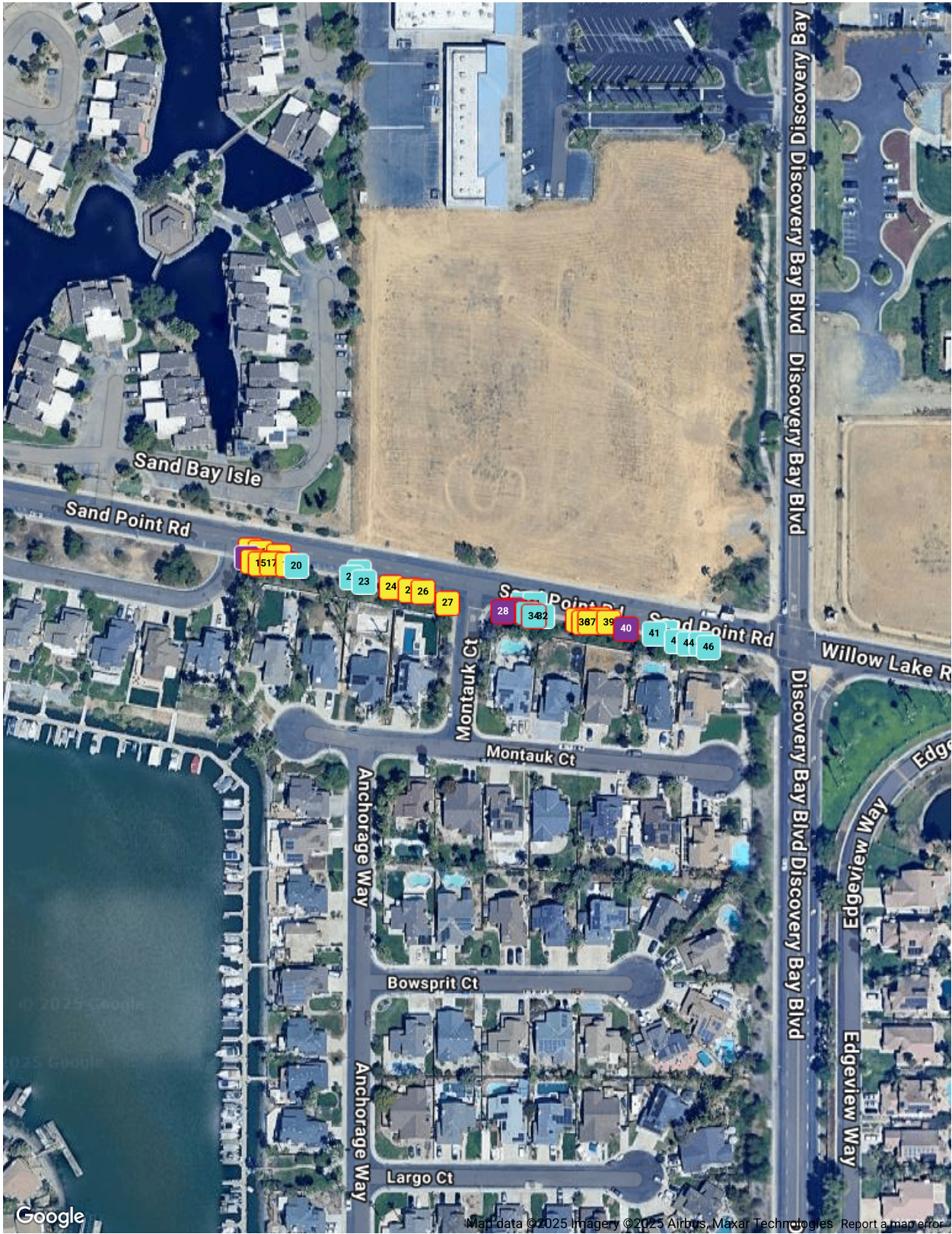
Tree Care Service Billing Address
Town of Discovery Bay
ID#: 43210
1601 Discovery Bay Boulevard
Discovery Bay, California 94505
Monica Gallo
mgallo@todb.ca.gov
tel:(925) 392-4575

Monarch Tree Services - Bay Area
A Monarch Landscape Company
Northern, California
Matthew Berry
Certified Arborist WE-3530A
Matt.Berry@monarchlandscape.com
tel:925-995-3372

	Species	Qty	Service	Price
■	Chinese Elm	1	Crown thin 15%	-
■	Raywood Ash	2	Crown thin 15% / Remove tree, grind stump	-
■	Myoporum	16	Remove tree, grind stump	-
■	Chinese Elm	3	Remove tree, grind stump	-
■	Raywood Ash	13	Crown thin 15%	-
			Total	\$8,980



Discovery Bay - Area 2 Jan. 10. 2025



- Legend (35)
- Myoporum (16)
 - Raywood Ash (15)
 - Chinese Elm (4)

Discovery Bay - Area 2 Jan. 10. 2025

Proposal #965494 02-18-2025



January 13, 2025

Ulmus parvifolia
Chinese Elm

ID# 12



January 13, 2025

Myoporum
Myoporum

ID# 13



January 13, 2025

Ulmus parvifolia
Chinese Elm

ID# 28



Crown thin 15%



Remove tree, grind stump



Remove tree, grind stump

Discovery Bay - Area 2 Jan. 10. 2025

Proposal #965494 02-18-2025



January 13, 2025

Ulmus parvifolia
Chinese Elm

ID# 29



January 13, 2025

Fraxinus oxycarpa cv...
Raywood Ash

ID# 30



January 13, 2025

Fraxinus oxycarpa cv...
Raywood Ash

ID# 33



Remove tree, grind stump



Crown thin 15%



Crown thin 15% / Remove tree, grind stump

Discovery Bay - Area 2 Jan. 10. 2025

Proposal #965494 02-18-2025



January 13, 2025

Fraxinus oxycarpa cv... ID# 34
Raywood Ash



January 13, 2025

Myoporum ID# 35
Myoporum



January 13, 2025

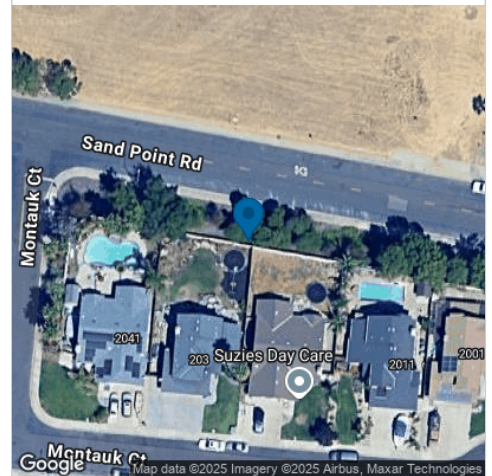
Myoporum ID# 36
Myoporum



Crown thin 15% / Remove tree, grind stump



Remove tree, grind stump



Remove tree, grind stump

Discovery Bay - Area 2 Jan. 10. 2025

Proposal #965494 02-18-2025



January 13, 2025

Myoporum
Myoporum

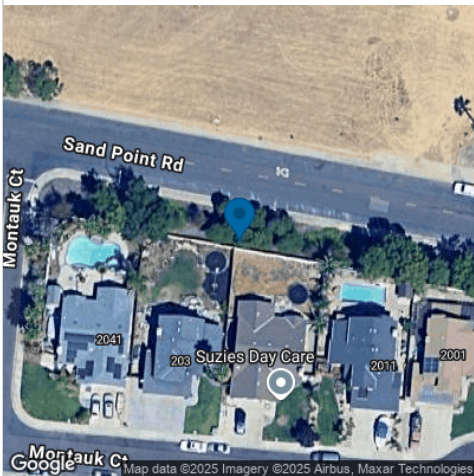
ID# 37



January 13, 2025

Ulmus parvifolia
Chinese Elm

ID# 40



Remove tree, grind stump



Remove tree, grind stump

Terms and Conditions for Tree Care Services

1. **Performance by Company:**

Work crews shall arrive at the job site unannounced unless otherwise noted herein. The Company shall attempt to meet all performance dates, but shall not be liable for damages due to delays from inclement weather or other causes beyond our control.

2. **Workmanship:**

All work will be performed in a professional manner by experienced personnel outfitted with the appropriate tools and equipment to complete the job properly. Unless otherwise indicated herein, The Company will remove wood, brush and debris incidental to the work.

3. **Insurance:**

The Company is insured for liability resulting from injury to persons or property, and all its employees are covered by Workers Compensation Insurance.

4. **Ownership:**

The customer warrants that all trees, plant material and property upon which work is to be performed are either owned by him/her or that permission for the work has been obtained from the owner.

The Company is to be held harmless from all claims for damages resulting from the customer's failure to obtain such permission.

5. **Limitations:**

The customer must identify all non- public utilities. The Company assumes no responsibility for the location of or damage to underground utilities not clearly marked by the customer prior to commencement of site services. Stump grinding and removals as proposed will occur where public utilities allow.

6. **Terms of Payment:**

All accounts are net payable upon receipt of invoice. A service charge of 1.5% will be added to accounts not fully paid 30 days subsequent to the invoice date. If outside assistance is used to collect the account, the customer is responsible for all costs associated with the collection, including, but not limited to, attorney fees and court costs.

Customer

February 18, 2025

Signature

Date

Monica Gallo

February 18, 2025

Printed Name

Date

Tree Care Service Provider

Matthew Berry

February 18, 2025

Signature

Date

Matthew Berry

February 18, 2025

Printed Name

Date

Certified Arborist WE-3530A



Town of Discovery Bay

“A Community Services District”

STAFF REPORT

Agenda Title: Discussion and Possible Feedback to Approve Agreement with Monarch Landscape Companies/Jensen Landscape for the Enhancement Project at Ravenswood Park.

Meeting Date: March 5, 2025

Prepared By: Monica Gallo, Landscape Manager

Submitted By: Dina Breitstein, General Manager

RECOMMENDED ACTION:

Provide feedback regarding the approval of the agreement with Monarch Landscape Companies/Jensen Landscape for the landscape enhancement project at Ravenswood Park for an amount of \$24,459.51, plus 15% Contingency.

EXECUTIVE SUMMARY:

Zone 9 is owned and maintained by the Town of Discovery Bay, CSD and includes the landscape streetscape frontages along Wilde Drive and Poe Drive and Ravenswood Park.

The landscaping in Zone 9 is approximately 20 years old and is overdue for landscaping and irrigation improvements.

In October 2024, the landscape along Wilde Drive received a new look along with upgraded irrigation. The next section of landscape in Zone 9 staff would like to make enhancements at are the four corners of Ravenswood Park along with the front of the monument sign where Poe Drive meets Bronte Drive.

Staff received a quote from Monarch Landscape Companies/Jensen Landscape for \$24,459.51 through its OMNIA cooperative agreement (District's OMNIA participant ID #1029102, Monarch Landscape Companies/Jensen Landscape participant ID #5480782). Cooperative agreements are allowed by District's Policy 011 Purchasing and Procurement. The benefit of a cooperative agreement is that the competition has been already conducted by another agency and the Town benefits from their negotiations.

FISCAL IMPACT:

Fiscal Year 2024-2025 operating budget.

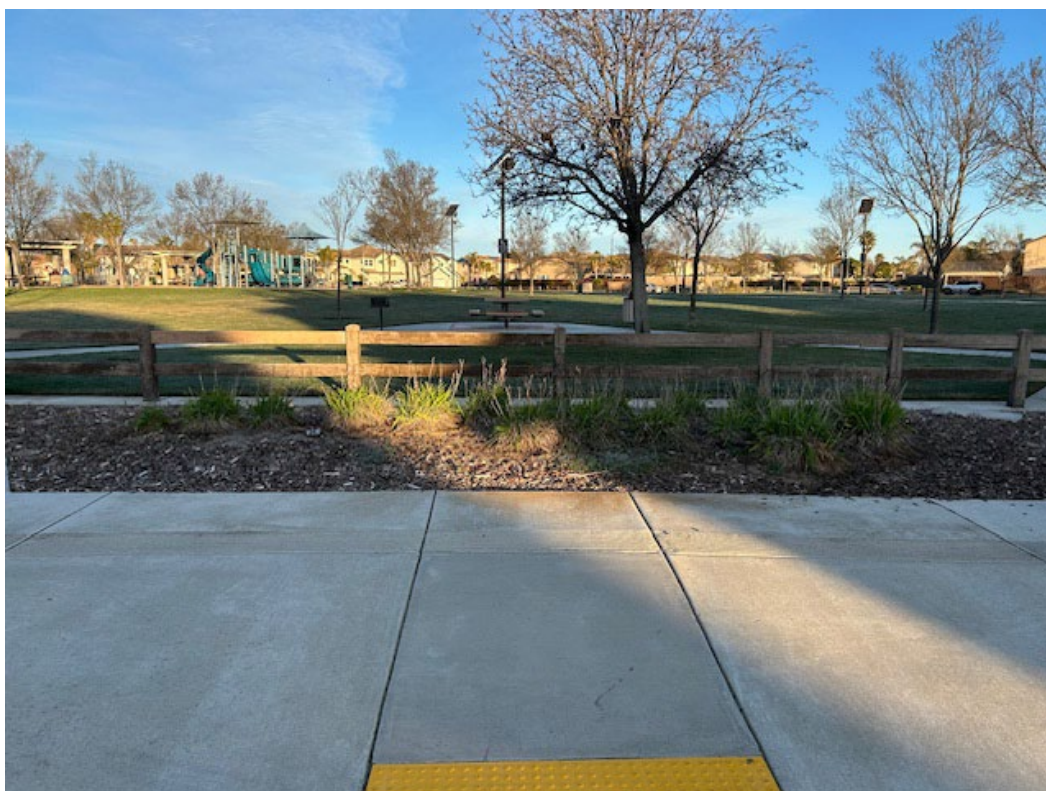
PREVIOUS RELEVANT BOARD ACTIONS FOR THIS ITEM:

None.

ATTACHMENTS:

1. Current Pictures of Ravenswood Park.
2. Monarch Landscape Companies/Jensen Landscape Proposal.

Current Pictures of Ravenswood Park.





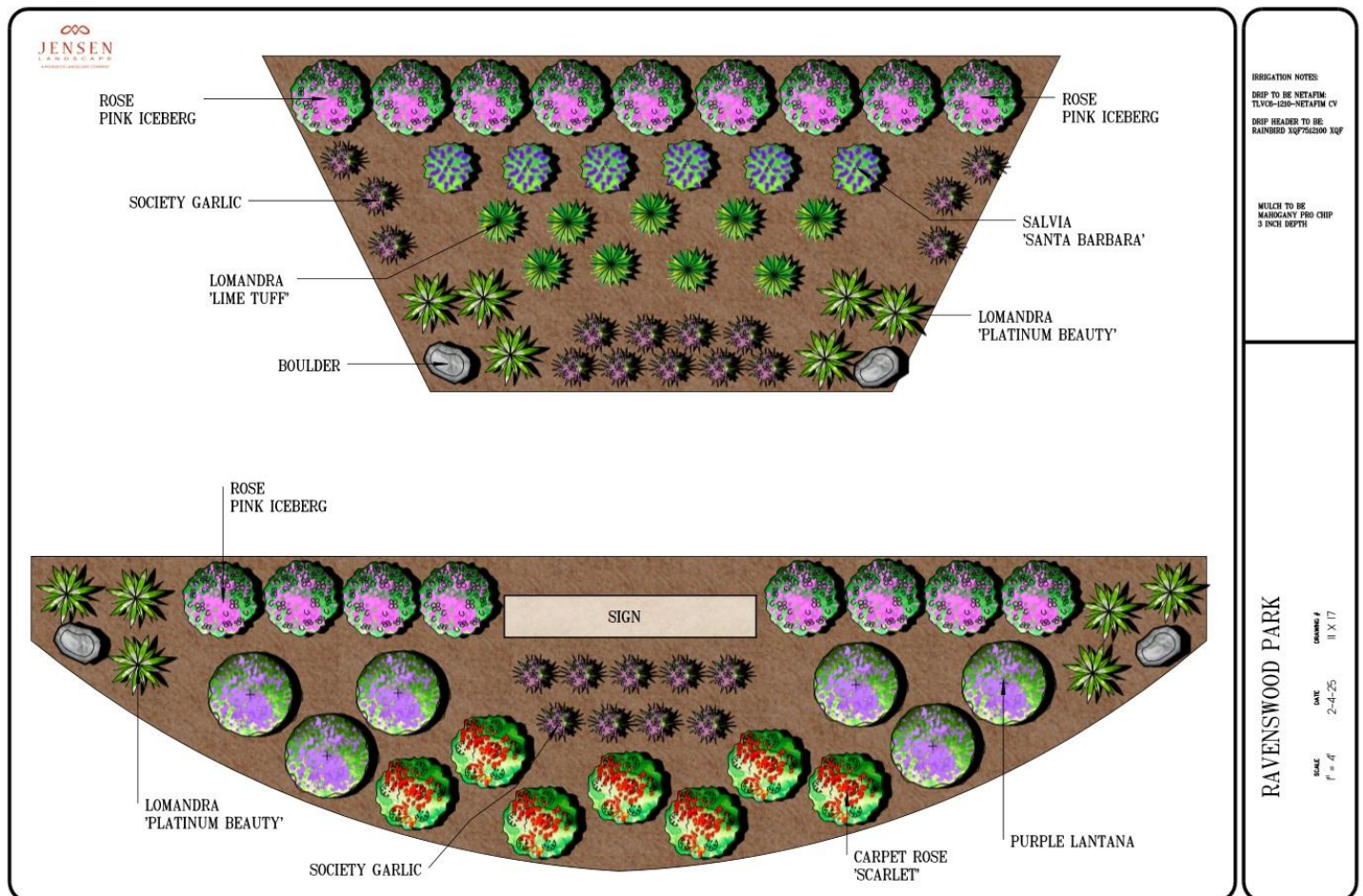
February 5, 2025

Site: TOWN OF DISCOVERY BAY
JLS Job #: Ravenswood Park
Re: Landscape and Irrigation Upgrades

Dear Monica,

Thank you for allowing Jensen Landscape Services the opportunity to provide you with this proposal. We propose to provide all labor, material, and equipment necessary to complete the following scope of work with the noted qualifications and exclusions.

Scope of work: Install new plantings, drip irrigation and install mulch



- Clear and grub landscape and haul away debris
- Change 5 each irrigation valve to drip
- Install Netafim drip irrigation
- Install 5 each drip flush valves with box
- Install 5 each drip pressure indicators
- Install 5 each drip air relief valves with box
- Install 28 each 1-gallon Lomandra 'Lime Tuff'
- Install 30 each 1-gallon Lomandra 'Platinum Beauty'
- Install 45 each 1-gallon Tulbaghia violacea
- Install 7 each 2-gallon Carpet Rose 'Scarlet'
- Install 24 each 5-gallon Salvia leucantha 'Santa Barbara'
- Install 6 each 5-gallon Purple Lantana
- Install 44 each 5-gallon Brilliant Pink Iceberg Rose
- Install 10 each approximately 300-pound Boulders
- Install 22.5 yards of Mahogany Pro Chip Mulch
- Clean up job related debris and haul away

Cost\$24,459.51

Approval Signature

Date

Plant Palette



Lomandra longifolia
'Lime Tuff'
Mat Rush



Lomandra longifolia
'Platinum Beauty'
Variegated Mat Rush



Lantana montevidensis
'Sellowiana'
Purple Trailing Lantana



Tulbaghia violacea
Violet
Society Garlic



**Rosa x hybrid
 'Scarlet'
 Scarlet Carpet Rose**



**Salvia leucantha
 'Santa Barbara'
 Mexican Sage**



**Rosa x hybrid
 'Brilliant Pink Iceberg'
 Pink Iceberg Rose**



**Mahogany Pro Chip Mulch
 Example**



Thank you again for the opportunity to present our budget to you. If you have any questions, please contact me at your earliest convenience.

Qualifications:

1. Assumes no underground utilities or other underground obstructions are in conflict with the work to be performed by Jensen Landscape Services or its subcontractors. If there are, or the client suspects that there may be, they are to be located by others prior to start of work.
2. Assumes all irrigation wires and valves are available and in good, operating condition and can accommodate the above enhancements. This includes new and modified irrigation.
3. Layout, supervision, and quality control measures are included in the program.
4. Photos do not represent actual sizes of installed plants nor year-round color.

Exclusions:

Jensen Landscape Services is not responsible for permits, fees, damage to underground utilities not located prior to start of work, backflow preventer unit, drainage system installation, viability of transplanted plants, repair of damaged hardscape beyond our control, and other unknown items not shown on client-submitted, as-built drawing.

Sincerely,
Rhett Hastings
Senior Project Manager
Cell: (925) 315-0267
Email: Rhett.hastings@jensencorp.com



Town of Discovery Bay

"A Community Services District"

STAFF REPORT

AGENDA ITEM:
E6

Agenda Title: Discussion and Possible Feedback to Move Forward with Prop 68 Per Capita Grant, Phase II at Cornell Park.

Meeting Date: March 5, 2025

Prepared By: Monica Gallo, Landscape Manager

Submitted By: Dina Breitstein, General Manager

RECOMMENDED ACTION:

Provide feedback regarding moving forward with Prop 68, Per Capita Grant, Phase II at Cornell Park.

EXECUTIVE SUMMARY:

In 2021, The Town of Discovery Bay received a Grant funded by the California State Parks; Parks Bond Act Per Capita Grant Program under the 2018 Parks Bond Act. The Grant covered the replacement of the basketball court surfacing and hoops. Replacement of the BBQ/picnic area including tables, prep table, lawn and new dog waste stations.

The Town has a total remaining balance of \$28,300 from the original grant, in which the State will cover \$23,645 upon approval of a new project from California State Parks.

With the newly seeded lawn growing nicely and our new playground structure being installed, staff are proposing to add a new amenity to Cornell Park for all to enjoy when visiting our park.

Just beyond the BBQ picnic tables is an area that would nicely fit the game of corn hole. Staff are proposing to turn this area (pictures attached), into a nice area where residents can congregate and play a fun game of corn hole. The estimated project cost would be between \$37,000 and \$47,000 depending on the surface chosen.

- Surface Option #1: Consists of decomposed granite with a stabilizing agent, concrete pads to house 4 permanently placed corn hole boards. – Approximately \$37,000.
- Surface Option #2: Consists of synthetic turf, gopher guard, concrete pads to house 4 permanently placed corn hole boards - \$47,000.

Prior to submission of the grant application to California State Parks, Staff is seeking the Board's direction if the project meets their needs and if the additional funds needed to complete the project is something the Board will support coming from reserves. Upon direction, Staff will submit the grant application to receive approval from California State Parks.

FISCAL IMPACT:

Total project costs range from \$37,000 to \$47,000 for which \$23,645 can be applied from the California State Parks grant. The balance of \$13,355 to \$23,335 would be drawn from reserves.

PREVIOUS RELEVANT BOARD ACTIONS FOR THIS ITEM:

None.

ATTACHMENTS:

1. Pictures of Proposed Site.





Town of Discovery Bay

“A Community Services District”

STAFF REPORT

Agenda Title: Discussion and Possible Feedback Regarding Safety Bollards at Cornell Park.

Meeting Date: March 5, 2025

Prepared By: Monica Gallo, Landscape Manager

Submitted By: Dina Breitstein, General Manager

RECOMMENDED ACTION:

Provide feedback regarding the attached quote from MRC/GameTime for Bollards around Cornell Park.

EXECUTIVE SUMMARY:

Cornell Park has unfortunately been targeted recently with individuals driving vehicles, golf carts and most recently motorcycles in all areas of the lawn doing burnouts which not only create ruts and digs up the lawn but is disrupting the homes surrounding the park.

The goal is to protect the park from such destruction, keeping it functional for Town maintenance and keeping it visually pleasing. Design considerations have been a chain link fence, wood posts with either wood rails or rope rails, concrete posts and rails and bollards. Taking into consideration a chain link fence would not be visually pleasing, wood splinters and require long term maintenance with painting or staining, rope is an invitation sit and swing on which is a safety concern, and the concrete posts and rails have proven to not be ideal long term and are quite costly. For these reasons, staff chose to receive a quote for bollards.

Staff received a quote to have bollards strategically placed around all entrances of the park to prevent vehicles and golf carts from entering, which include collapsible locking bollards to allow for Town work trucks and mowers to enter the park for maintenance. Unfortunately, since receiving the quote for bollards we now have received reports of motorcycles entering the park.

Staff received a quote from MRC/GameTime for \$130,518.87 for the Cornell Park Bollard Project, located at 505 Discovery Bay Blvd. through its OMNIA cooperative agreement (District's OMNIA participant ID #1029102, MRC/GameTime participant ID #2017001134). Cooperative agreements are allowed by District's Policy 011 Purchasing and Procurement. The benefit of a cooperative agreement is that the competition has been already conducted by another agency and the Town benefits from their negotiations.

FISCAL IMPACT:

PREVIOUS RELEVANT BOARD ACTIONS FOR THIS ITEM:

None.

ATTACHMENTS:

1. Quote from MRC/GameTime.
2. Bollard Picture.
3. Bollard Locations and Measurements.



C/O MRC
PO Box 225250
San Francisco, CA 94122
Ph: 800-235-2440
Em: MRC@GAMETIME.COM
Web: www.mrcrec.com

02/04/2025
Quote #
116802-01-02

CA Discovery Bay Town of Cornell Park Bollard Project Revised

Discovery Bay Town of
Attn: Monica Gallo
1601 Discovery Bay Blvd
Discovery Bay, CA 94505
United States
Phone: 925-727-2167
Fax: 925-513-2075
mgallo@toddb.ca.gov

Ship to Zip 94505

Quantity	Part #	Description	Unit Price	Amount
4	2900	UltraSite - 30" TALL COLLAPSIBLE BOLLARD P/C- Powdercoat Color: _____	\$683.00	\$2,732.00
151	2803SM	UltraSite - 8 RD SAFETY BOLLARD 3ft SURFACE MOUNT P/C"- Powdercoat Color: _____	\$516.00	\$77,916.00
10	2803S	UltraSite - 8 RD SAFETY BOLLARD 3ft INGROUND P/C"- Powdercoat Color: _____	\$580.00	\$5,800.00
1	INSTALL	UltraSite - Installation- <i>Includes installation of above-quoted bollards; off haul spoils from footings; off load & accept delivery of bollards.</i>	\$39,079.00	\$39,079.00
Contract: OMNIA #2017001134			Sub Total	\$125,527.00
			Discount	(\$5,186.88)
			Freight	\$3,068.40
			Tax	\$7,110.35
			Total	\$130,518.87

Comments

OMNIA Partners f/n/a USC Contract #2017001134 Vendor #121531

Please supply your OMNIA registration # or Federal Tax ID #: _____

Shipping to Discovery Bay, CA 94505.

Site preparation, sub base, and safety surfacing are not included in this proposal.

Please note: The sales tax rate used on the quote is determinant on the final end use location, which is 505 Discovery Bay Blvd., Discovery Bay, CA 94505. Any variation will result in a review of the appropriate tax rate, which will be applied to your final order.

Bonds are NOT included and will be an additional cost if required.



C/O MRC
PO Box 225250
San Francisco, CA 94122
Ph: 800-235-2440
Em: MRC@GAMETIME.COM
Web: www.mrcrec.com

02/04/2025
Quote #
116802-01-02

CA Discovery Bay Town of Cornell Park Bollard Project Revised

This quotation is subject to policies in the current GAMETIME PARK & PLAYGROUND CATALOG and the following terms and conditions. Our quotation is based on shipment of all items at one time to a single destination, unless noted, and changes are subject to price adjustment. Purchases in excess of \$1,000.00 to be supported by your written purchase order made out to **GAMETIME c/o MRC**. Customer is responsible for any required permits and fees pertaining to such permits.

PRICING / PAYMENT: Pricing f.o.b. factory, firm for 30 days from date of quotation unless otherwise stated above. Payment terms: Purchase order made payable to **GameTime**. Net 30 days for tax supported governmental agencies. A 1.5% per month finance charge will be imposed on all past due accounts. Equipment shall be invoiced separately from other services and shall be payable in advance of those services and project completion. Retainage not accepted.

TAXES: State and local taxes, if applicable, will be added at time of invoicing unless a tax exempt certificate is provided at the time of order entry.

FREIGHT CHARGES: Prepaid and added at time of invoicing. Shipment: order will ship within 10-12 weeks after GameTime's receipt and acceptance of your purchase order, signed quotation and color selections.

RECEIPT OF GOODS: Installer is responsible for unloading and uncrating equipment from truck. Installer shall receive, unload and inspect goods upon arrival, noting any discrepancies on the Delivery Receipt prior to written acceptance of the shipment.

INSTALLATION: Installation by a Certified Installer. Terms of installation listed briefly below:

- Installation Pricing is based on manufacturer's recommended footing depth of 30" below finished grade. Any requirement greater than that will incur additional charges.
- Installation assumes a flat, dirt surface with no grading preparation required.
- Gametime's installer is not responsible for any site preparation, and/or grading.
- Customer is responsible for calling 888-DIG-SAFE a minimum of 72 hours before installation is to begin.
- Direct access is required for large construction vehicles.
- All work is to be done in one move. All excavated material is to remain on site.
- Customer is responsible for storage of equipment and transporting equipment from storage to the site, if storage is other than installation site.
- The installation of safety surfacing and/or border timbers is not included in the above price.
- Fencing, overnight security, and bonding fees are not included.
- Unforeseen subsurface obstructions may incur additional charges.

EXCLUSIONS: unless specifically included, this quotation excludes all site work and landscaping; removal of existing equipment; storage of goods prior to installation; safety surfacing; borders; drainage provisions; fencing; security and bonding fees.

TO ORDER: Please complete the acceptance portion of this quotation and provide color selections, purchase order, and other key information requested. Acceptance of this proposal indicates your agreement to the terms and conditions stated herein.

Sales Representative: David Zehnder/es



C/O MRC
PO Box 225250
San Francisco, CA 94122
Ph: 800-235-2440
Em: MRC@GAMETIME.COM
Web: www.mrcrec.com

02/04/2025
Quote #
116802-01-02

CA Discovery Bay Town of Cornell Park Bollard Project Revised

Acceptance of quotation: (ALL INFORMATION REQUIRED)

Accepted By (printed): _____ P.O. No: _____

Signature: _____ Date: _____

Title: _____ Phone: _____

Email: _____ Facsimile: _____

Purchase Amount: **\$130,518.87**

Order Information: (ALL INFORMATION REQUIRED)

Bill To: _____ Ship To: _____

Bill To Contact: _____ Ship To Contact: _____

Bill To Email: _____ Ship To Email: _____

Bill To Phone: _____ Ship To Phone: (Office): _____

(Cell): _____

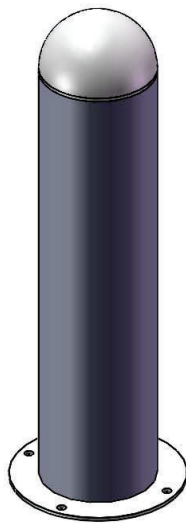
Bill to Address: _____ Ship To Address: _____

Bill To City, State, Zip: _____ Ship To City, State, Zip: _____

SALES TAX EXEMPTION CERTIFICATE #: _____
(PLEASE PROVIDE A COPY OF CERTIFICATE)



A **PLAYCORE** Company



Model # 2803SM



Cornell Park Proposed location of Bollards

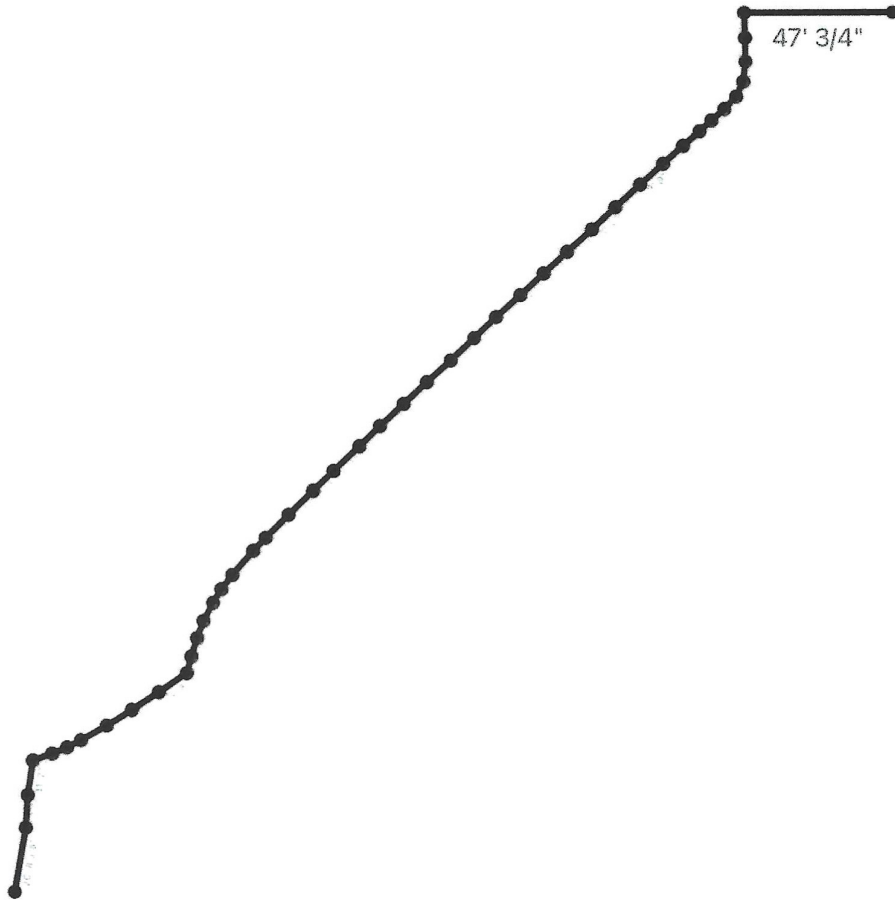
 = proposed bollard locations



cornell park perimeter by ball court Horizontal
3024.83 ft² / 230' 2 1/4"

0 20 40 80





Cornell Park North Entrance - Horizontal
7471.04 ft² / 427' 10 1/4"

